

How to Make Your Own Compost Tea & Extract

Benefits of Tea & Extract

- Increases plant growth
- Adds nutrients to plants and soil
- Adds beneficial organisms to plants and soil
- Helps prevent disease

Compost Tea & Extract

It is important to brew in the same ambient temperature as where it will be applied.

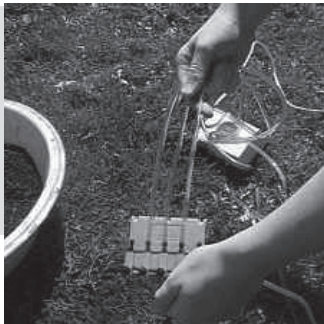
FOR BOTH PROCESSES YOU WILL NEED:

- [1] 5 gal. bucket
- 2-5 lbs.** good-smelling finished Compost
- [1] compost sock: burlap bag, nylons, sock, tea towel, cheesecloth etc.
- [1] aquarium pump
- [1] gang valve [to divide the air supply into 2 streams]
- [2] aerator stones
- 6+ ft** aquarium hose
- 4 gal.** non-chlorinated water



STEPS:

1. Cut hose in 3 pieces, each long enough to reach from the pump to the bucket bottom.



2. Attach aerator stones to 2 of the 3 hoses.
3. Attach 3 hoses to the gang valve; one to the pump; make sure the two with aerator stones reach to the bucket bottom.
4. Place gang valve on bucket edge.
5. Put compost into your compost sock.
6. Hang compost sock in the bucket & massage briskly for 30-60 seconds.
7. Turn on aerator.



For Compost Extract

- Let aerate for 1-2 hours.
- Using cloth, strain tea/compost mixture into another bucket or sprayer. Solids can go back into compost pile/garden.
- Immediately after brewing **APPLY TO THE SOIL** around plants & before planting.

For Compost Tea

- Add 2 Tbsp. of Microbe Food. [see back]
- Add 2 Tbsp. of Microbe Catalyst: Rock Dust, Sea Minerals, Wood Ash [something high in minerals].
- Let aerate for 24-36 hours.
- Using cloth, strain tea/compost mixture into another bucket or sprayer. Solids can go back into compost pile/garden.

- Immediately after brewing **APPLY TO THE PLANT FOLIAGE.**

Compost Tea & Extract should smell sweet and earthy. If it smells bad, do not use it on your plants. Put it back in the compost pile.

[Chlorine kills beneficial organisms in the tea].

If you only have chlorinated water, run the aerator in the water for an hour or leave the water out for at least 24 hours. This will evaporate the chlorine and then it will be safe to use for compost tea & extract.

Different Plants Like Different TEA

Type of Plant	Type of Tea
Most Brassicas	Highly Bacterial
Veggies, Grasses	Moderately Bacterial
Berries	Even, Bacteria to Fungi
Deciduous Trees	Moderately Fungal
Coniferous Trees	Highly Fungal

If you are focusing on fungal growth, brew time is almost never long enough for fungi to actually multiply; they only grow bigger. However, you can activate the fungi in the compost several days before brewing to increase their number.

- In a separate container, mix 1 C. compost with 3-4 Tbsp. **fungus** food. [see back]
- Put in a warm, dark place for about 3-7 days at 80° F. This should promote fungal hyphae growth. It will look like white cotton fluff.
- Brew Compost Tea using this fungally pre-activated compost.

Microbe Food

Ingredient	Feeds
-------------------	--------------

White Sugar	Bacteria
Maple Syrup	Bacteria
Corn Syrup	Bacteria
Cane Sugar	Bacteria
Fish Emulsion	Bacteria
Worm Castings	Bacteria

Molasses	Bacteria/Fungi
Fruit Pulp	Bacteria/Fungi
Kelp	Bacteria/Fungi
Rock Dusts	Bacteria/Fungi
Humic Acids	Bacteria/Fungi

Fish Hydrolysate	Fungi
Ground Oatmeal	Fungi
Powdered Malt	Fungi
Soybean Meal	Fungi

How to Use Your Aerated Tea & Extract

TEAS are applied to the FOLIAGE.

Inoculating **foliage** with beneficial bacteria from Compost Tea will help fight off foliar pathogens & diseases like powdery mildew.

EXTRACTS are applied to the SOIL.

You are increasing the diversity of your **soil** biology wherever you apply

Use your tea as soon as you can, since the beneficial microbes begin to die after the air source is gone.

Finished Tea & Extract can be used to irrigate the garden.

Apply every 10 days.

Resources:

Dr. Elaine Ingham, Soil Food Web Inc.

www.soilfoodweb.com

Jeff Lowenfels and Wayne Lewis

www.teamingwithmicrobes.com



SPOKANE MASTER COMPOSTER
& RECYCLER PROGRAM
2900 S. Geiger Blvd.
Spokane, WA 99224

The Master Composter & Recycler Program is sponsored by the Spokane County Regional Solid Waste System.



Master Composters & Recyclers are volunteers who are working to promote the practice of home composting throughout Spokane County.

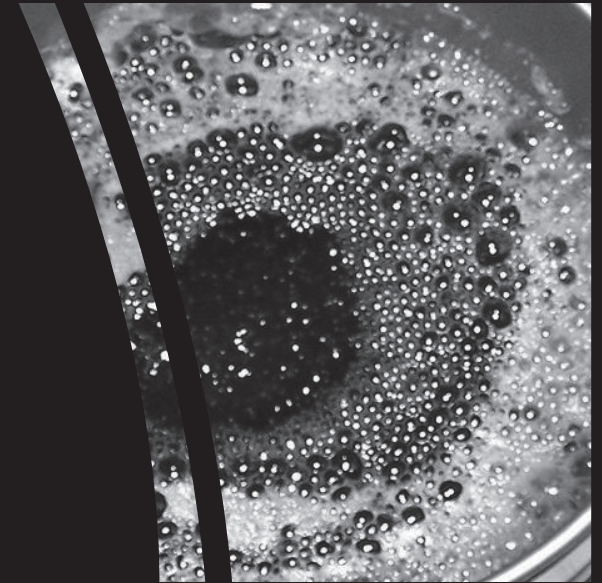
Recycling Hot Line 477-6800
www.spokanecountysolidwaste.org



Printed on recycled/recyclable paper with partial funding from a grant from the WA State Department of Ecology

COMPOST TEA

COMPOST EXTRACT



TWO TYPES OF BREW!

NOT FOR DRINKING

Can replace chemical-based fertilizers, pesticides, and fungicides

INSIDE

Directions for building your own Aerating Bucket



PRINTED ON RECYCLED PAPER