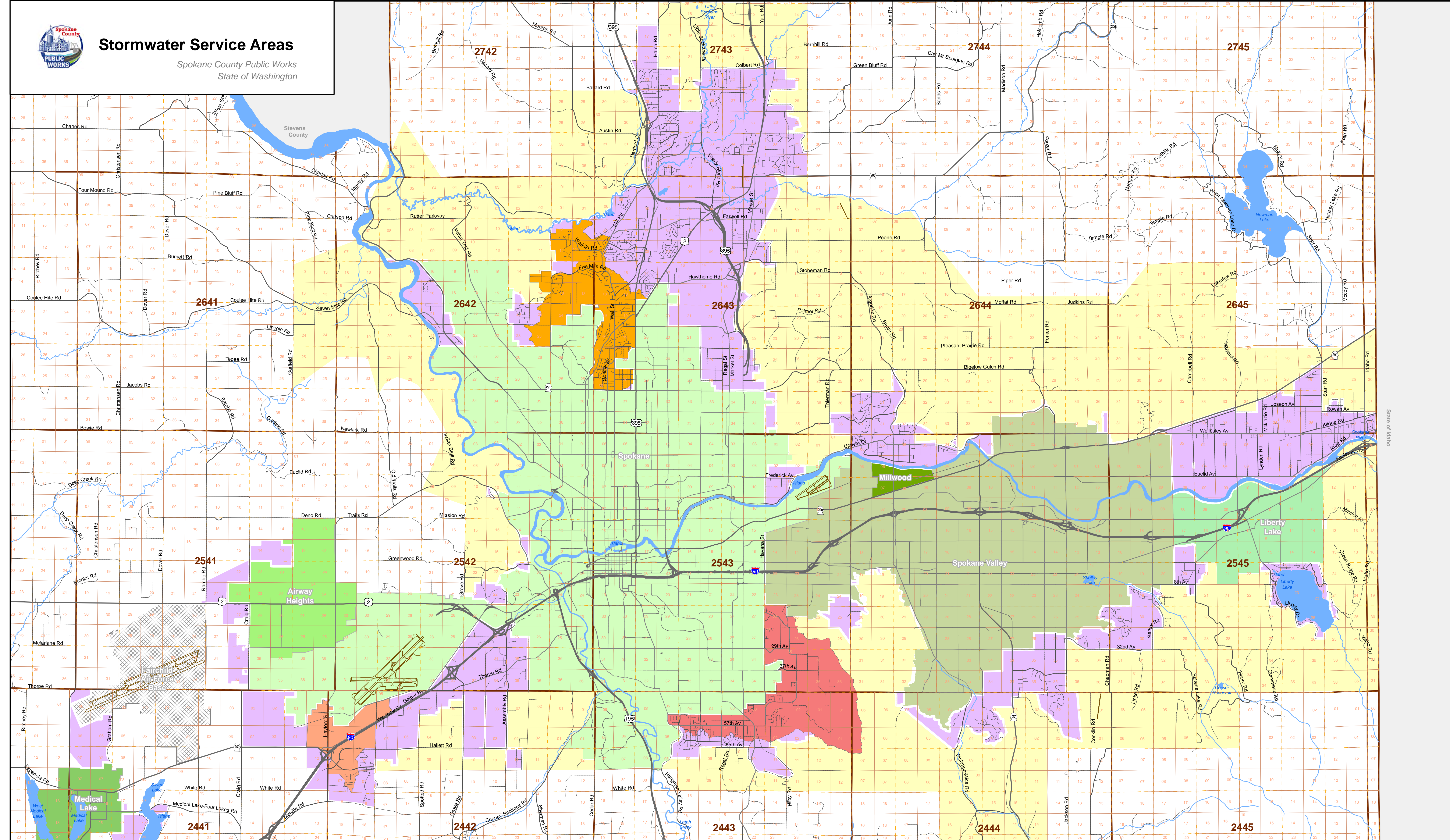




Stormwater Service Areas

Spokane County Public Works
State of Washington



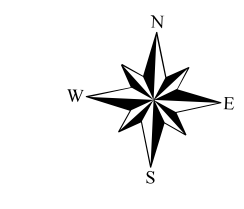
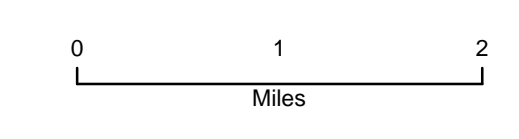
- Major City, State and Federal Roads**
- Freeway
 - Highway
 - Major Arterial
 - Minor Arterial
 - Collector

- Spokane County Roads**
- | Paved | Unpaved |
|--------------------|--------------------|
| Arterial/Collector | Arterial/Collector |
| Local Access | Local Access |

- NPDES Boundary
- Stormwater Service Area
- Waterbody
- Streams

- Glenrose Special District, \$63 ERU
- North Spokane Special District, \$40 ERU
- West Plains Special District, \$48 ERU

- Airway Heights
- Fairchild Air Force Base
- Medical Lake
- Liberty Lake
- Millwood
- Spokane
- Spokane Valley



This product is for informational purposes and as a general planning and management tool. Care was used during compilation of this data and final product to insure accuracy, but it may be based in whole or in part on the quality of the source data and outside sources of information. This product may not have been prepared for, or be suitable for, legal, engineering, or surveying purposes. Spokane County and the Public Works Department do not accept responsibility for errors and omissions, and therefore, there are no warranties that accompany this material, and therefore, there are no warranties that accompany this material. Users of this information should consult the primary data and information sources to ascertain any usability of this information. This information may be periodically updated. Users of this information should check with the Spokane County Public Works to ensure that they have the latest revision. Document Path: Z:\GIS\WorkShop\Storm\Water\SWSA_NPDES May 2019\SpokaneCountySWSA_NPDES_May2019.mxd | Map Created: 5/15/2019