

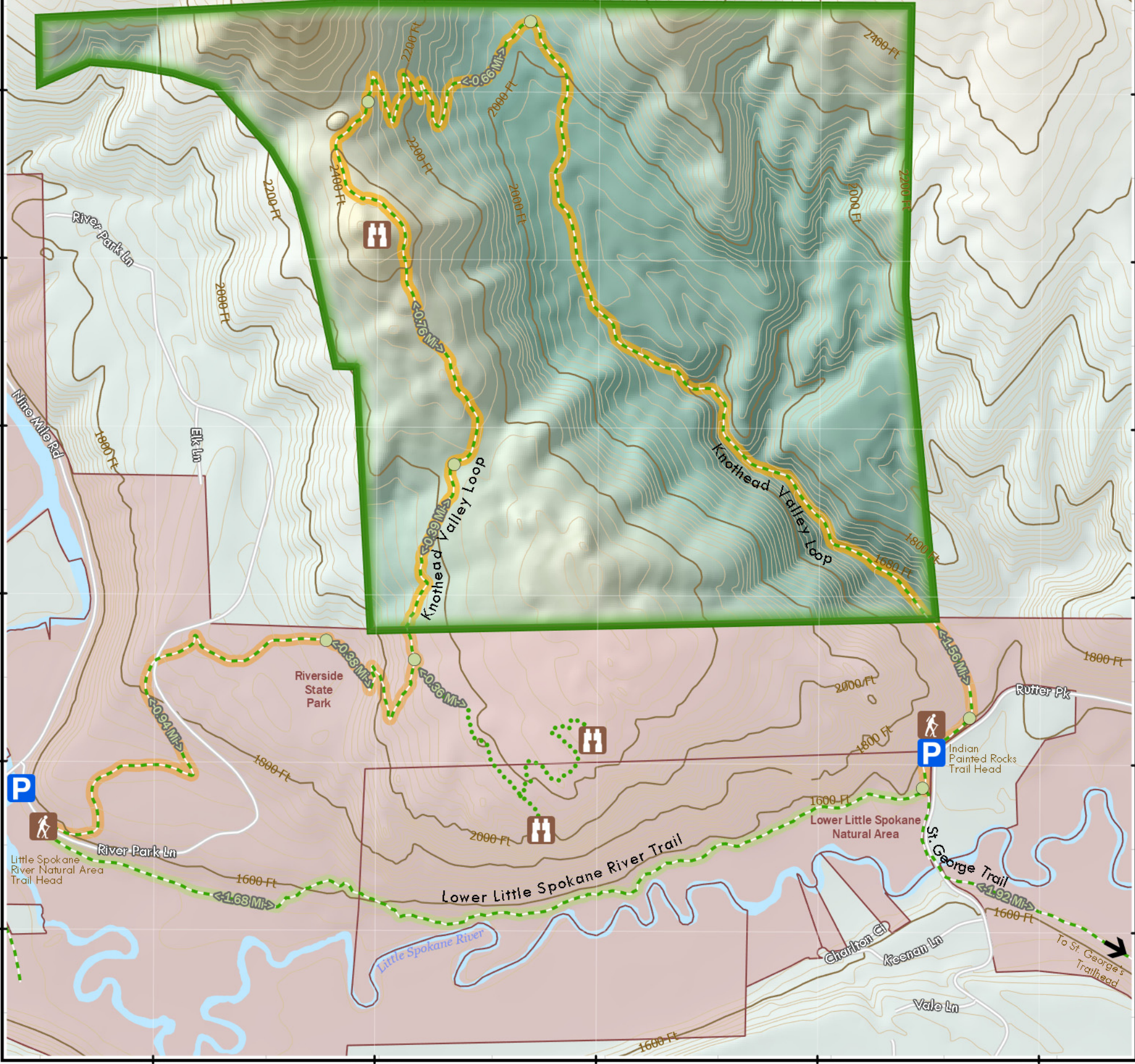
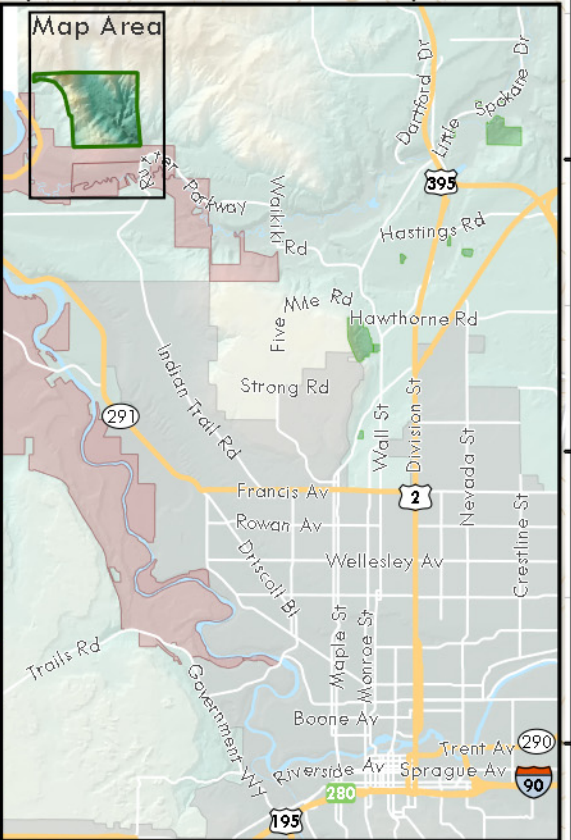
**Vanhorn, Edburg and Bass Road Access:**

**Eastern Trail Head:**  
 Indian Painted Rocks -  
 5626 W Rutter Parkway

**Western Trail Head:**  
 Lower Little Spokane River Natural Area -  
 13766 N River Park Lane\*

\*Approximate location of Trail Head.  
 Note: parking for this trailhead is just off  
 of N Nine Mile Road and its intersection  
 with River Park Lane.

**County Park Ranger Contact Information:**  
 509-998-8807



- Spokane County [\[Website\]](#)
- Vanhorn, Edburg & Bass Conservation Area
- Other Spokane County Parks
- Other**
- Washington State Parks [\[Website\]](#)
- Trails
- Unmaintained Route
- Mileage Point
- Public Access
- Parking
- Viewpoint

## Vanhorn, Edburg & Bass Conservation Area

*Owned by Spokane County  
 Managed and Operated by  
 Washington State Parks*

Spokane County Geographic Information Systems  
 Map Produced: February 2021



Contour Interval: 40 Ft

Note: This is a GIS map showing base layers rendered for "best fit" with digital orthophotography. While every attempt is made to ensure the accuracy of this information, no warranty accompanies this map. If you have any additional questions, please contact the Spokane County Parks department at: 509-477-4730.