



CREEK CRITTERS!

Science With Spokane County Water Resources

CRICKET CREEK IS BEST FOR THE TROUT RELEASE BECAUSE IT HAS EXCELLENT WATER QUALITY.

WATER HEALTH KEY

IF YOU FOUND THE MOST IN...	THE CREEK HEALTH IS:
Group 1	Excellent
Group 2	Good to Fair
Group 3	Poor

CREEK 1 CRICKET CREEK The Water Health is: EXCELLENT!

Number Found in GROUP 1 6 	Group 1 - Excellent Water					Group 3 - Poor Water	
	 RIFFLE BEETLE (larva)	 RIFFLE BEETLE (adult)	 STONEFLY (nymph)	 CADDISFLY (larva)	 SNAIL	 MAYFLY (nymph)	 MIDGE (larva)
Number Found in GROUP 2 0 	Group 2 - Good or Fair Water					 MIDGE (larva) AQUATIC WORM MIDGE (pupa)	
	 DRAGONFLY (nymph)	 CRAYFISH	 -gills FILTERING CADDISFLY (Hydropsychidae) (larva)	 BLACKFLY (pupa)	 BLACKFLY (larva)	 HELLGRAMMITE (Dobsonfly) (larva)	Number Found in GROUP 3 0
	 CRANEFLY (larva)	 SOWBUG	 SCUD				

CREEK 2 CROOKED CREEK The Water Health is: FAIR TO POOR!

Number Found in GROUP 1 1 	Group 1 - Excellent Water					Group 3 - Poor Water	
	 RIFFLE BEETLE (larva)	 RIFFLE BEETLE (adult)	 STONEFLY (nymph)	 CADDISFLY (larva)	 SNAIL	 MAYFLY (nymph)	 MIDGE (larva)
Number Found in GROUP 2 3 	Group 2 - Average Water					 MIDGE (larva) AQUATIC WORM MIDGE (pupa)	
	 DRAGONFLY (nymph)	 CRAYFISH	 -gills FILTERING CADDISFLY (Hydropsychidae) (larva)	 BLACKFLY (pupa)	 BLACKFLY (larva)	 HELLGRAMMITE (Dobsonfly) (larva)	Number Found in GROUP 3 3
	 CRANEFLY (larva)	 SOWBUG	 SCUD				

TIE

TIE

CREEK 1 CRICKET CREEK



STONEFLY



RIFFLE BEETLE LARVAE



ADULT RIFFLE BEETLE



CADDISFLY



MAYFLY



RIGHT-HANDED GILLED SNAIL

CREEK 2 CROOKED CREEK



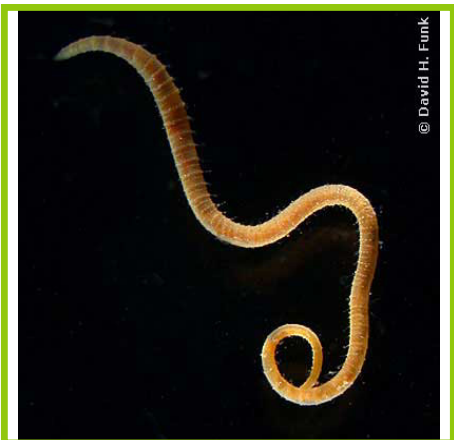
MIDGE



LEFT POUCH SNAIL



DRAGONFLY



AQUATIC WORM



CRAY FISH



SCUD