

Legend

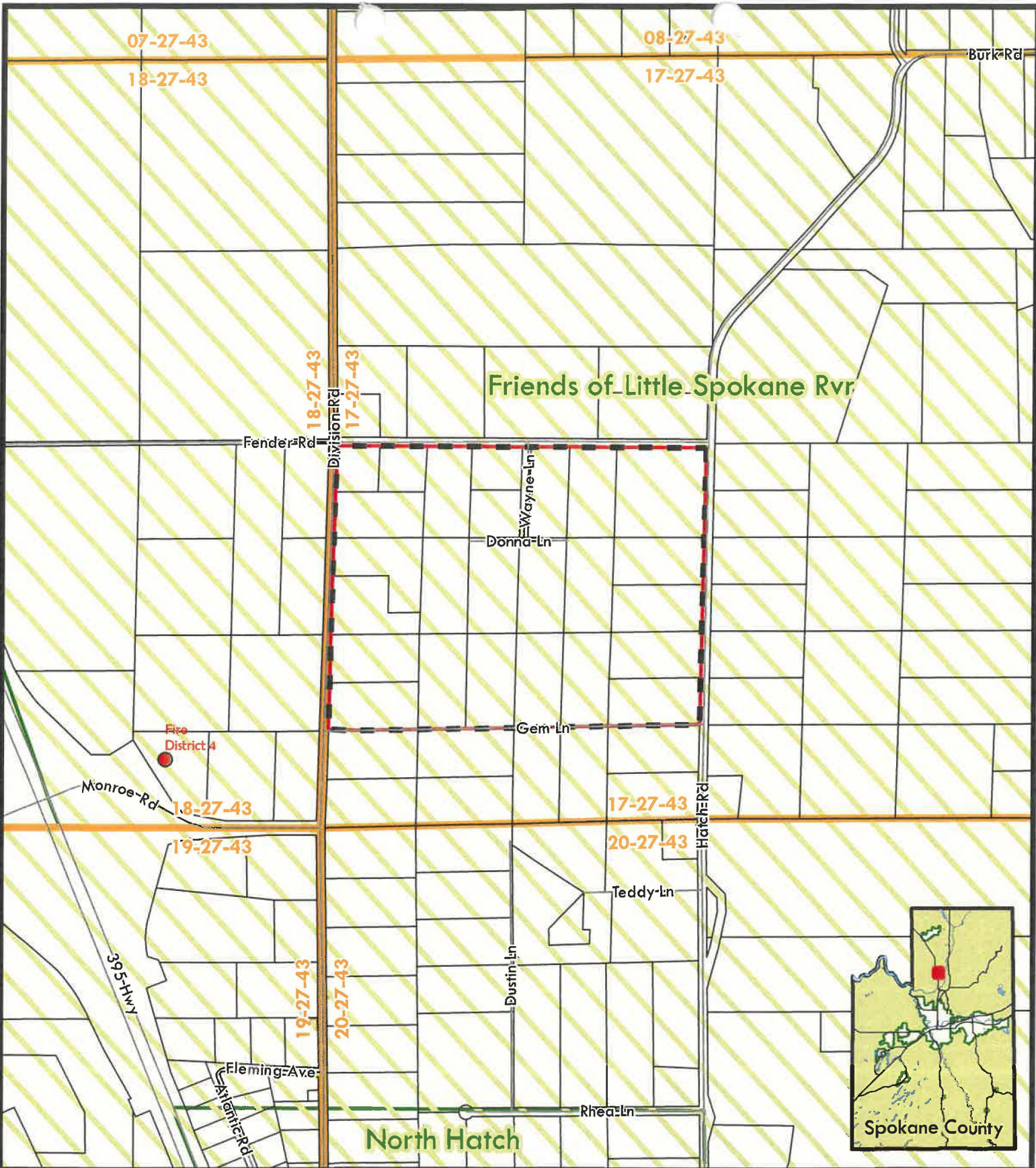
- Requested Addition Area
- Established No Shoot Area
- Joint Planning Area
- School
- Police Station
- Fire Station
- Railroad
- ~ Lakes & Streams

NS-01-23
No Shooting Area
Vicinity Map

0 445 890 1,780 2,670 3,560 Feet
 1 inch = 1,800 feet
 State Plane WA North

This map was published by the Spokane County Department of Building and Planning as a general planning tool. Due to the differing quality of source documents, the Department cannot accept responsibility for errors or omissions, and therefore, there are no warranties which accompany this material.

Map Produced: November 2023
 Spokane County GIS

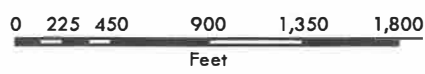


NS-01-23

Vicinity Map

Legend

- Requested No Shoot Addition
- Joint Planning Area
- Neighborhood Assoc
- School
- Police Station
- Fire Station
- Railroad
- Lakes & Streams



1 inch = 900 feet
State Plane WA North

This map was published by the Spokane County Department of Building and Planning as a general planning tool. Due to the differing quality of source documents, the Department cannot accept responsibility for errors or omissions, and therefore, there are no warranties which accompany this material.

Map Produced: November 2023
Spokane County GIS