

Spokane County Regional Trail Plan



Draft 2014

A Collaborative Effort Between:

Inland Northwest Trails Coalition

Spokane County Department of Parks

Recreation and Golf



Purpose of Plan

- Guides and assists staff and elected officials on future trail projects and land use decisions;
- Helps obtain outside funding for projects through grants and other sources;
- Establishes a vision of an interconnected trail network; and
- Provides strategies to implement the vision.

Right: Meeting to plan Liberty Lake Trail Re-route, 2010 (Funded through RCO Grant).



Background

- **2003:** Parks to Peaks Plan, which identified potential open space corridors was completed.
- **2004-2007:** Regional Trail Plan developed with help from a National Park Service Planning Grant & Inland NW Trails Coalition.
- **2008:** Adopted by the BoCC.

Right: A frozen Hog Lake, Fishtrap Recreation Area (Bureau of Land Management)



Why Update the 2008 Plan?

- Must be updated every 6 years to retain grant eligibility
- Some 2008 trail strategies have been completed (e.g. Iron Bridge)
- Several large open space areas have been acquired – creating new trail opportunities

Right: *Camas meadows at Turnbull Wildlife Refuge (US Fish and Wildlife Service)*



What's New?

- A mapped inventory of trails (p. 21-33)
- Several new trail strategies/projects (e.g. North Green Acres Trail, 3-1)
- Demand and Needs Analysis Chapter (p. 10)
- Over all more detail
- More data driven

Right: A new section of the Centennial Trail at Gateway Park, completed in 2013, funded by RCO Grant (Spokane County Parks).



The Regional Trail System Will:

- **Create an arterial trail system that connects parks, open spaces, and communities;**
- **Connect local/neighborhood trail networks to the regional (“arterial”) trail system;**
- **Connect trail and transit systems;**
- Link colleges and universities to each other to the greater community;
- Create a large “circle and spoke” system connecting communities throughout Spokane County;
- Identify trail connections for local use and neighborhood access to existing park and trail facilities;
- Encourage co-location of trails and conservation corridors in locations where a trail and the activities associated with it will not adversely impact the conservation qualities the corridor is intended to protect; and
- Promote a variety of implementation methods applicable to trails on public and private lands.

How Do We Make the Vision a Reality?

- Map what trails we have (Inventory)
- Analyze the existing trail network (Where are the disconnections?)
- Develop goals, policies and specific strategies
- Identify funding opportunities and pursue projects.

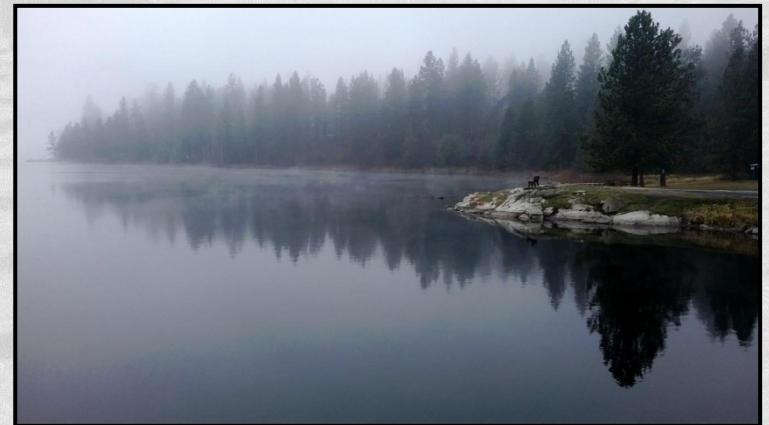
Right: Trail walkers at Minnehaha Park (City of Spokane Parks)



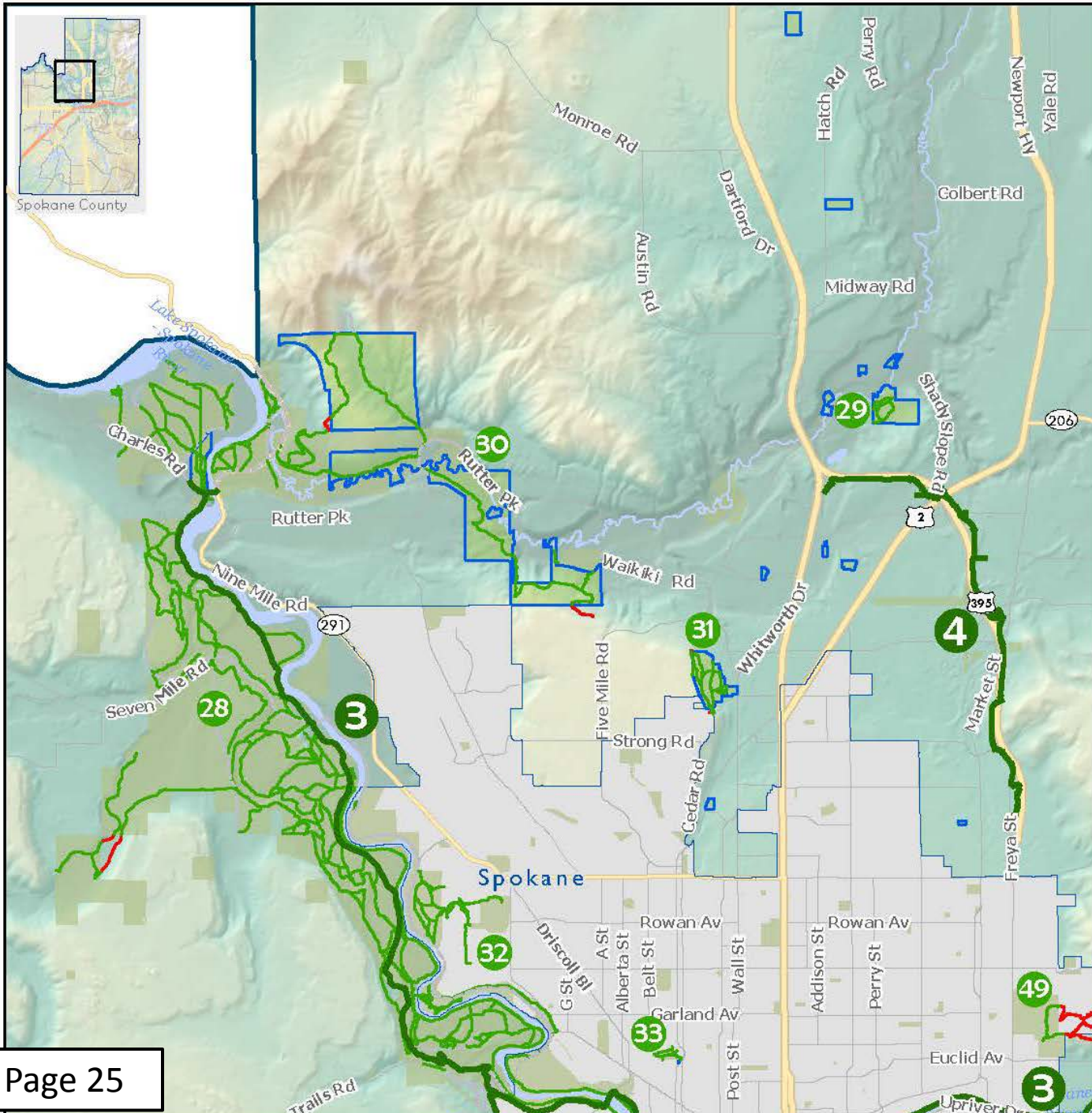
So, what's out there?

- *At least* **677.31** miles of Trail! (R/T to Seattle: 556 miles)
- Trail Types:
 - Asphalt, separated (e.g. Fish Lake Trail)
 - Asphalt, sidewalk-like (e.g. Liberty Lake)
 - Single Track, designated, native surface
 - Single Track, user built/worn, unofficial
 - Single Track, user built/worn, unofficial, on private property.
 - Old logging/access roads
 - Abandoned RR grade

Right: Medical Lake from the Medical Lake Trail, funded in part through RCO Grants (City of Medical Lake / DNR)



North Spokane



- Major Trail
- Single Track Trail
- Trail on Private Property ¹
- Trail on Road
- Spokane County Parks
- Other Public Lands ³
- Federal Land
- Inland Empire Paper Property ²
- Interstate
- Highway
- State Route
- Other Roads

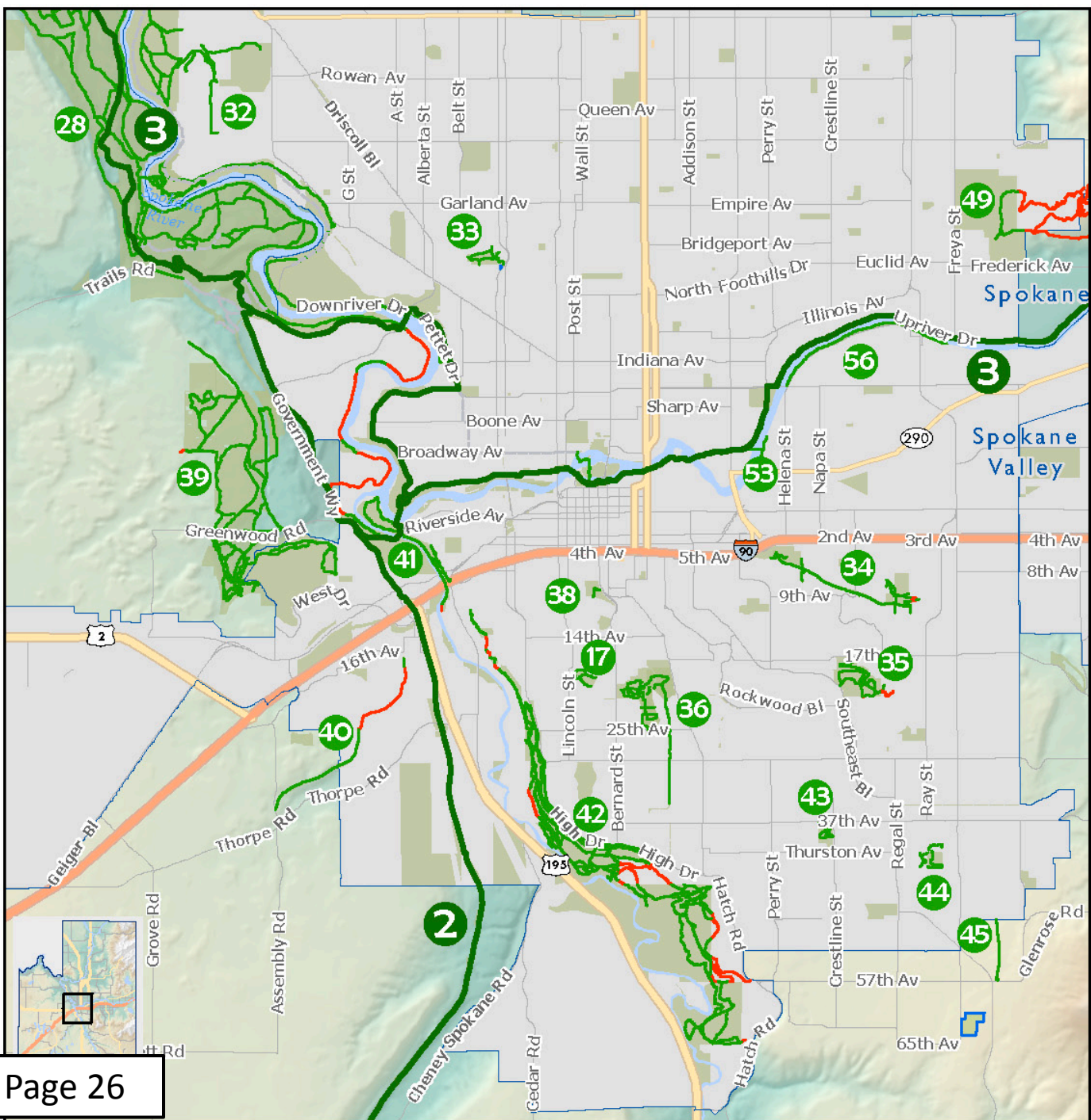
¹Please respect property owners and stay off this trail.
²Certain trail activities allowed with permit.
³Incl. City Parks, County Property, WA DNR.

Trails:

- Centennial Trail
- Children of the Sun Trail
- Riverside State Park
- Haynes Estate Conservation Area
- Lower Little Spokane Natura Area
- Holmberg Park
- Dwight Merkel Sports Complex
- Drumheller Springs Conservation Area
- Beacon Hill



Map Produced: Spokane County GIS
November 2013



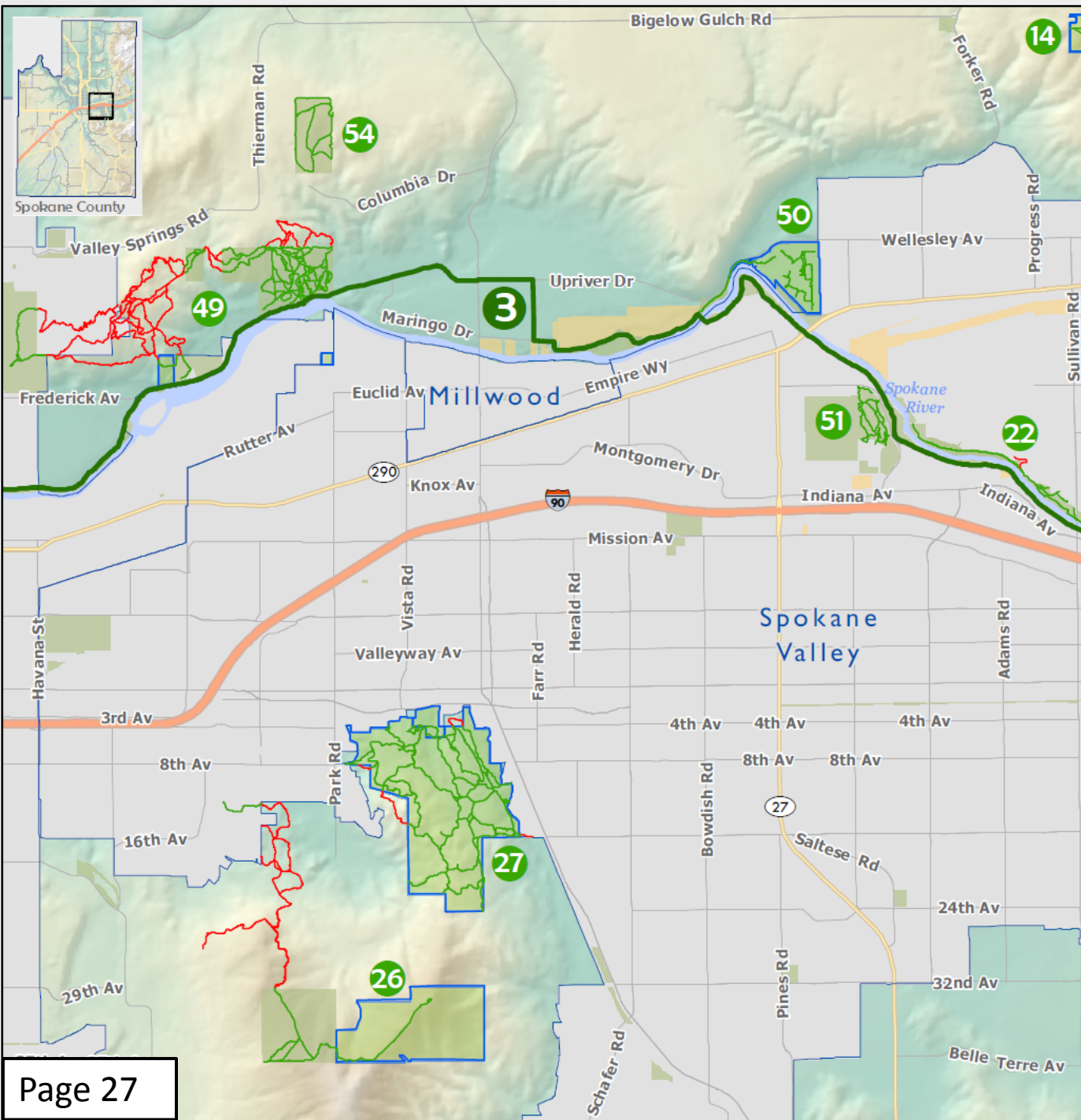
Urban Core

- Major Trail
- Single Track Trail
- Trail on Private Property ¹
- Trail on Road
- Spokane County Parks
- Other Public Lands ³
- Federal Land
- Inland Empire Paper Property ²
- Interstate
- Highway
- State Route
- Other Roads

¹Please respect property owners and stay off this trail.
²Certain trail activities allowed with permit.
³Incl. City Parks, County Property, WA DNR.

- Trails:
- 2 Fish Lake Trail
 - 3 Centennial Trail
 - 17 Cannon Hill Park
 - 28 Riverside State Park
 - 32 Dwight Merkel Sports Complex
 - 33 Drumheller Springs Conservation Area
 - 34 Ben Burr / Underhill Park
 - 35 Lincoln Park
 - 36 Manito Park
 - 38 Tiger Trail
 - 39 Palisades Park - Indian Canyon
 - 40 Trolley Trail Conservation Area
 - 41 Lower Latah Creek/Peoples Park
 - 42 High Drive Bluffs
 - 43 Hamblen Park
 - 44 Hazel Creek Stormwater
 - 45 Ben Burr South
 - 49 Beacon Hill
 - 53 Iron Bridge
 - 56 Tuffy's Trail





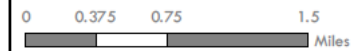
West Spokane Valley

- Major Trail
- Single Track Trail
- Trail on Private Property ¹
- Spokane County Parks
- Other Public Lands ³
- Federal Land
- Inland Empire Paper Property ²
- Interstate
- Highway
- State Route
- Other Roads

¹Please respect property owners and stay off this trail.
²Certain trail activities allowed with permit.
³Incl. City Parks, County Property, WA DNR.

Trails:

- Centennial Trail
- Antoine Peak Conservation Area
- Spokane River North Bank
- Dishman Hills Cons. Area - Glenrose
- Dishman Hills Natural Area
- Beacon Hill
- Plante's Ferry Sport Complex
- Mirabeau Park
- DNR Fancher



Map Produced: Spokane County GIS
 November 2013

East Spokane Valley

-  Major Trail
-  Single Track Trail
-  Trail on Private Property ¹
-  Spokane County Parks
-  Other Public Lands ³
-  Federal Land
-  Inland Empire Paper Property ²
-  Interstate
-  Highway
-  State Route
-  Other Roads

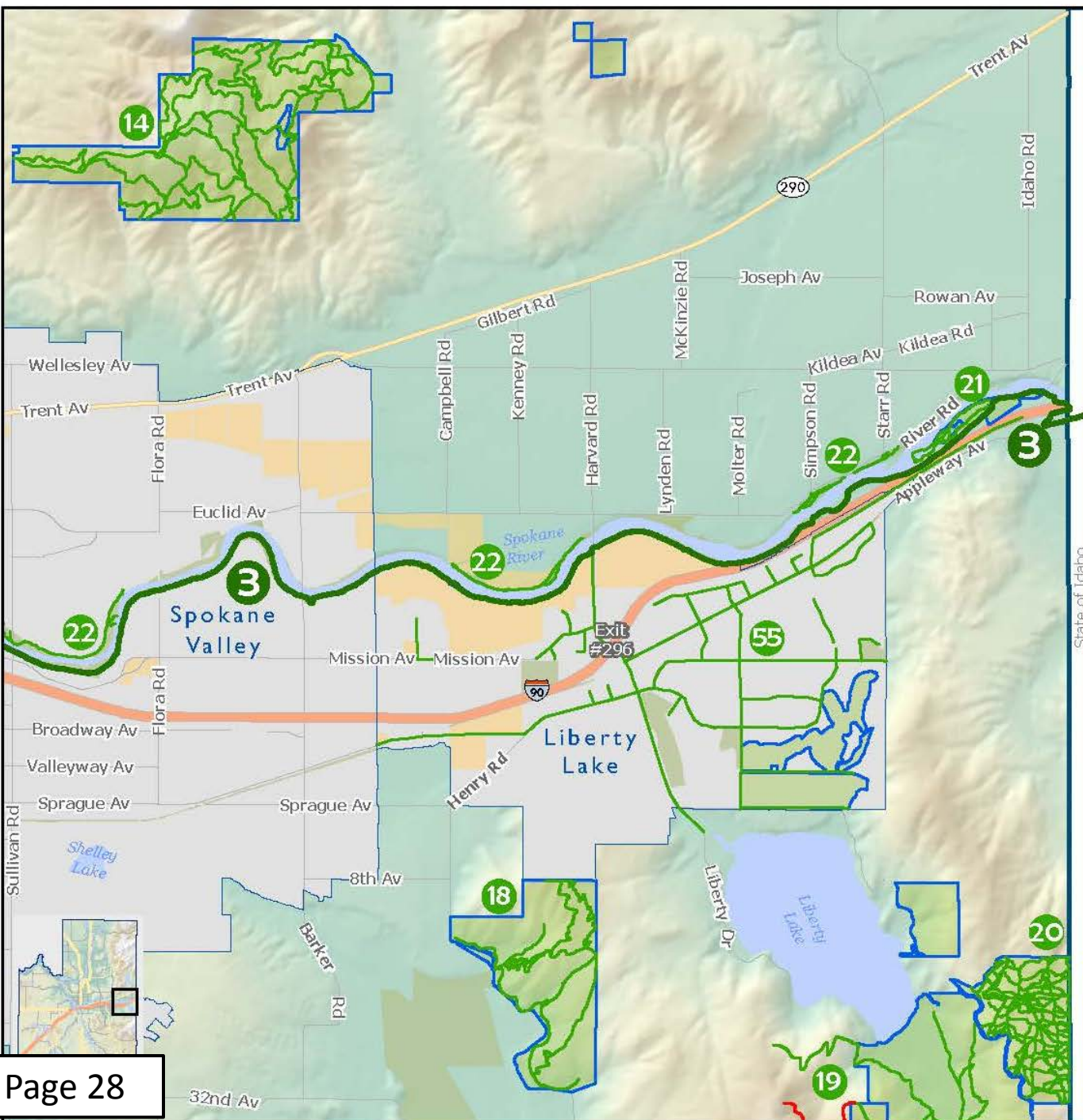
¹Please respect property owners and stay off this trail.
²Certain trail activities allowed with permit.
³Incl. City Parks, County Property, WA DNR.

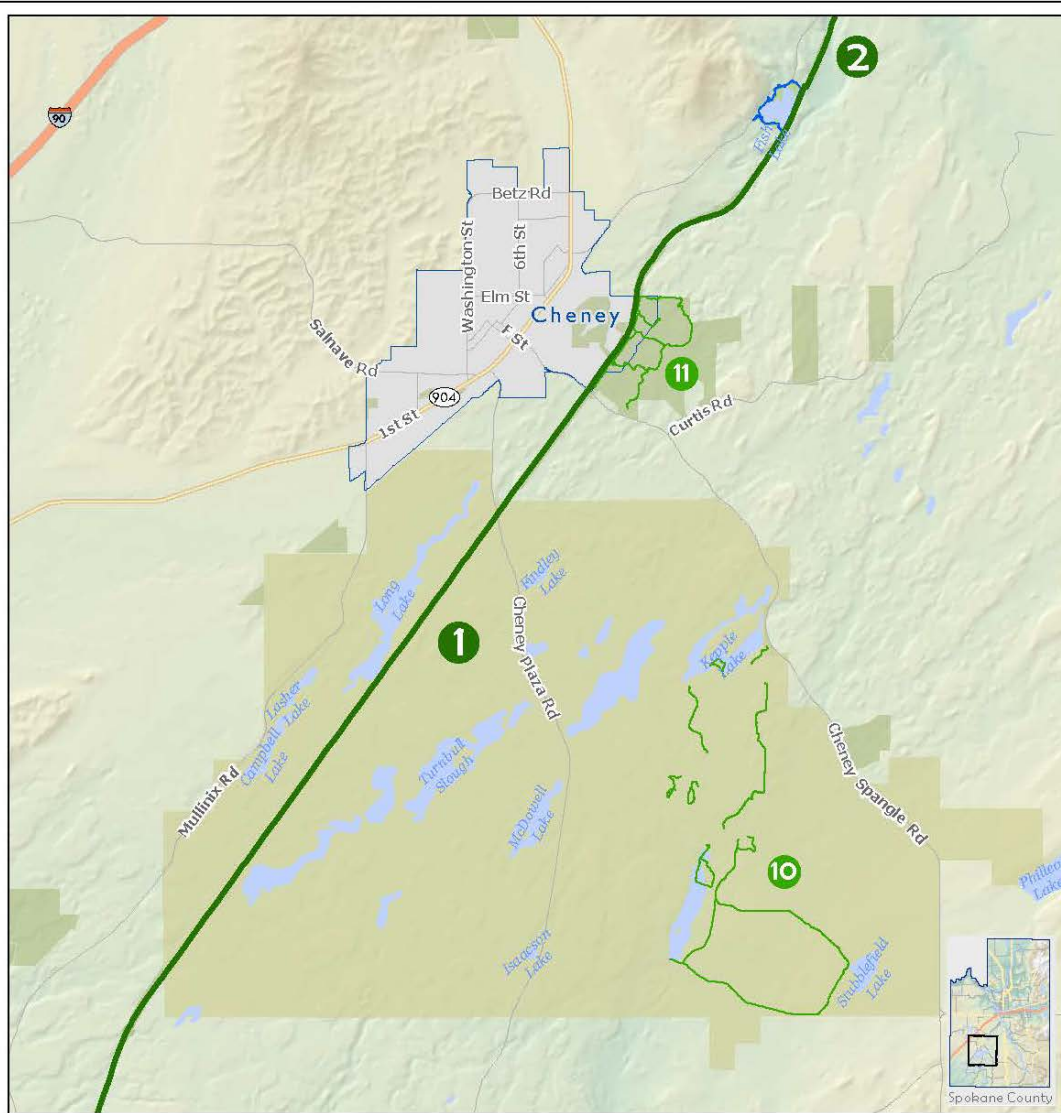
Trails:

-  Centennial Trail
-  Antoine Peak Conservation Area
-  Saltese Uplands Conservation Area
-  Liberty Lake Regional Park
-  Liberty Lake ORV Park
-  Gateway Regional Park
-  Spokane River North Bank
-  City of Liberty Lake Trail Network



Map Produced: Spokane County GIS
 November 2013





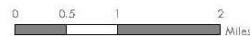
Channeled Scablands West

- | | | |
|--------------------|---|-------------|
| Major Trail | Spokane County Parks | Interstate |
| Single Track Trail | Other Public Lands ³ | Highway |
| | Federal Land | State Route |
| | Inland Empire Paper Property ² | Other Roads |

Trails:

- 1 Columbia Plateau Trail
- 2 Fish Lake Trail
- 10 Turnbull National Wildlife Refuge
- 11 Cheney Wetlands

²Certain trail activities allowed with permit.
³Incl. City Parks, County Property, WA DNR.



Four Main Goals*

- Develop an interconnected system of trails
- Ensure adequate maintenance
- Ensure road and trail standards include BMPs
- Promote the trail system as an economic development tool

**Unchanged from 2008 Plan*

Right: South Segment of the Ben Burr Trail
near 57th Ave and Palouse Highway
(Spokane County)



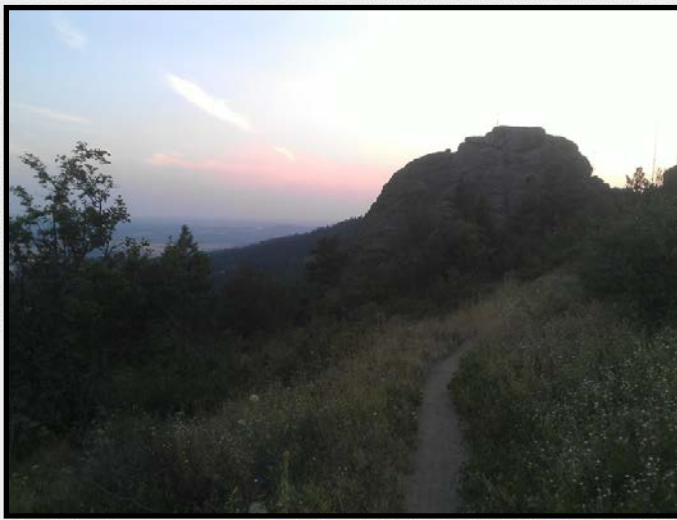
Trail Specific Strategies

“Making the Connections”

- Many of the 2008 Strategies were kept
 - E.g. Develop safe crossing at Mission Street for the Centennial Trail
- Strategies added based on:
 - Jurisdiction input
 - Public input
 - Trail Organization input
 - Staff input / data

Right: The Iron Bridge Spur of the Centennial Trail, funded through an RCO Grant. (City of Spokane)





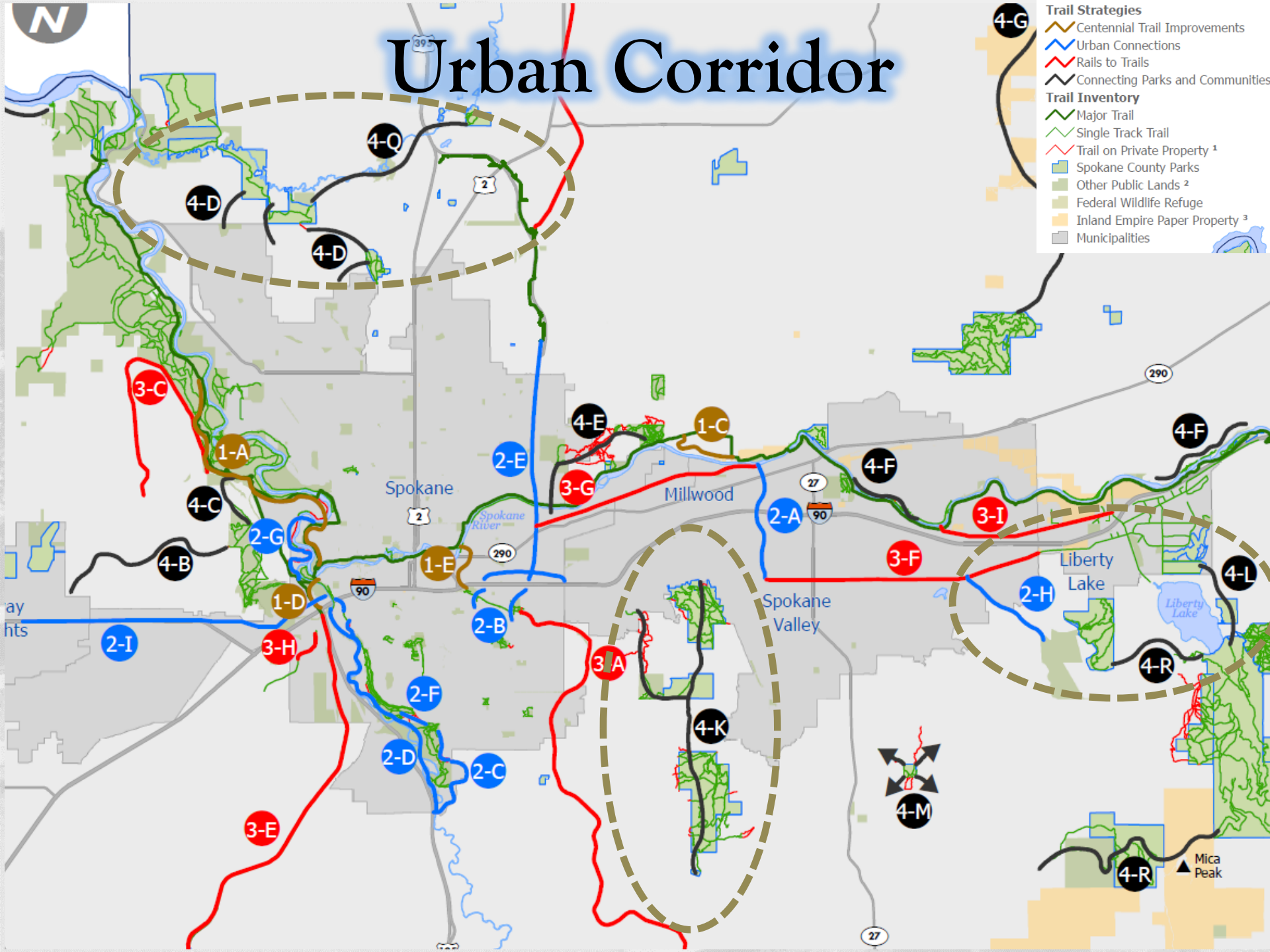
[Link to Regional Trail Strategies Map \(p. 42\)](#)

[Link to Urban Corridor Trail Strategies Map \(p. 43\)](#)



Upper Left, Clockwise: Big Rock (DHCA), Centennial Trail at Mirabeau Park, Slavin Conservation Area, Iron Bridge Spur.

Urban Corridor



Funding for Implementation

- Federal
 - Recreational Trails Program / SRTC
- State
 - Recreation & Conservation Office Grants
 - WSDOT Funding
- Local
 - Conservation Futures
(Open Space Corridor Acquisition)
 - General Fund Budgets
 - Transportation Benefit Districts

Right: Hikers enjoying Slavin Conservation Area (Spokane County Parks)



Initial Public Outreach

- Online Survey posted for 2+ months
- INTC outreach at area trailheads
- INTC outreach to recreation users & organizations.
- Spokane County outreach to jurisdictions and interested parties.
- Article in the Spokesman Review (June)
- INTC Appearance on radio.

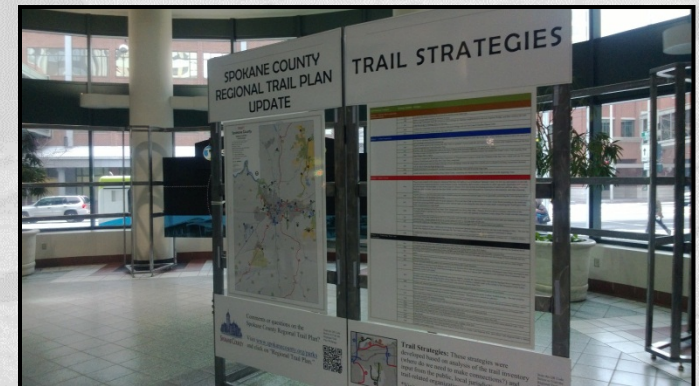
***Right:** Snowshoers enjoying Dishman Hills Conservation Area; acquisition funded in part through an RCO Grant (Spokane County Parks)*



Final Public Outreach

- Advertised Open House at REI, January 7th, 2014
- Spokane Transit Authority Display, December 20th – January 3rd, 2014
- Spokesman Review Article, January 5th
- Press Release December 20th
- KXLY Story – January 6th

Right: STA Plaza Display for the Regional Trail Plan Update (12/13)



Steps Towards Adoption

- **March 1 Deadline to submit to RCO**
- 60 day Notice to Commerce – 12/5/13
- SEPA Determination/Notice – 12/5/13
- PAC Briefing – 12/11/13
- PAC Recommendation – 1/8/14
- Planning Commission Briefing & Public Hearing – 1/16/14 (Voted 7-1 to Recommend)
- ★ BoCC Briefing – 2/4/14

Questions & Comments?



Above: Bonnie Lake as viewed from Washington State Department of Natural Resources land (undeveloped public access).