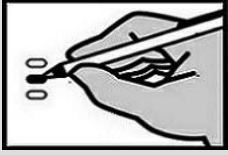
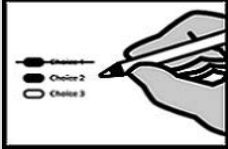


Sample Ballot
Spokane County Washington
April 26, 2022 Special Election



Completely fill in the oval to the left of your choice. Use a dark blue or black pen.

Unless specifically allowed by law, more than one vote for a ballot measure will be an overvote and no votes for that ballot measure will be counted.



If you need to make a correction or mismarked your ballot, draw a line through the entire response. You then have the option of making another choice.

In order for your ballot to be counted, it must either be postmarked or deposited at a designated deposit site no later than 8:00 p.m. on Election Day (April 26, 2022).

For a list of the people and organizations that donated to local ballot measure campaigns, visit www.pdc.wa.gov.

City of Spokane

**ONLY REGISTERED VOTERS IN
CITY OF SPOKANE
ARE ELIGIBLE TO VOTE ON THE FOLLOWING**

Proposition No. 1
City of Spokane
EMS - Emergency Medical Services Levy

The City of Spokane approved Resolution No. 2022-0015, authorizing a ballot proposition imposing additional regular property tax levies to be used exclusively for EMS - Emergency Medical Services for the years 2023 through 2028 in the sum of \$0.50 per \$1,000 of 2022 assessed value as set forth in Ordinance No. C-36175.

Shall the City of Spokane be authorized to impose regular property tax levies in the sum of \$0.50 per \$1,000 of 2022 assessed valuation for the continued provision of EMS - Emergency Medical Services for each year for six consecutive years to be collected in 2023 through 2028 inclusive?

- Yes
- No

INTENTIONALLY LEFT BLANK

April 26, 2022 Election Information

If you have changed your residence address, you may update your address and receive an updated ballot by visiting www.spokanecounty.org/elections until Monday, April 18, 2022.

- Beginning on Tuesday, April 19, 2022, you may update your registration in person at the Spokane County Elections Office.

Ballot Drop Box Locations

Ballot Drop Boxes are available starting April 7, 2022 and close promptly at 8:00 p.m. on Election Day – April 26, 2022:

- Airway Heights Library - 1213 S Lundstrom St
- Elections Office - 1033 W Gardner Ave
- Hillyard Library - 4110 N Cook St
- The Hive - 2904 E Sprague Ave
- Liberty Park Library - 402 S Pittsburg St
- Moran Prairie Library - 6004 S Regal St
- North Spokane Library - 44 E Hawthorne Rd
- Shadle Aquatic Center - 2005 W Wellesley Ave
- Spokane County Courthouse - 1116 W Broadway Ave
- STA Plaza - 701 W Riverside Ave

Locations are also listed at www.spokanecounty.org/elections or www.votewa.gov.

Voter Service Center

Voters may drop off ballots, get replacement ballots, use an Accessible Voting Unit, or receive other assistance as needed at the Voter Service Center:

Spokane County Elections Office - 1033 W Gardner Ave

- Monday - Friday: 8:30 a.m. to 4:00 p.m.
- Election Day, Tuesday, April 26, 2022: 7:00 a.m. to 8:00 p.m.

Contact Information

Spokane County Elections

Online: spokanecounty.org/elections

Email: elections@spokanecounty.org

Phone: 509-477-2320

In order for your ballot to be counted, it must be either postmarked or deposited at a designated deposit site no later than 8:00 p.m. on Election Day. If depositing your ballot in a US Postal Service box, Postage is Prepaid - no postage is required.