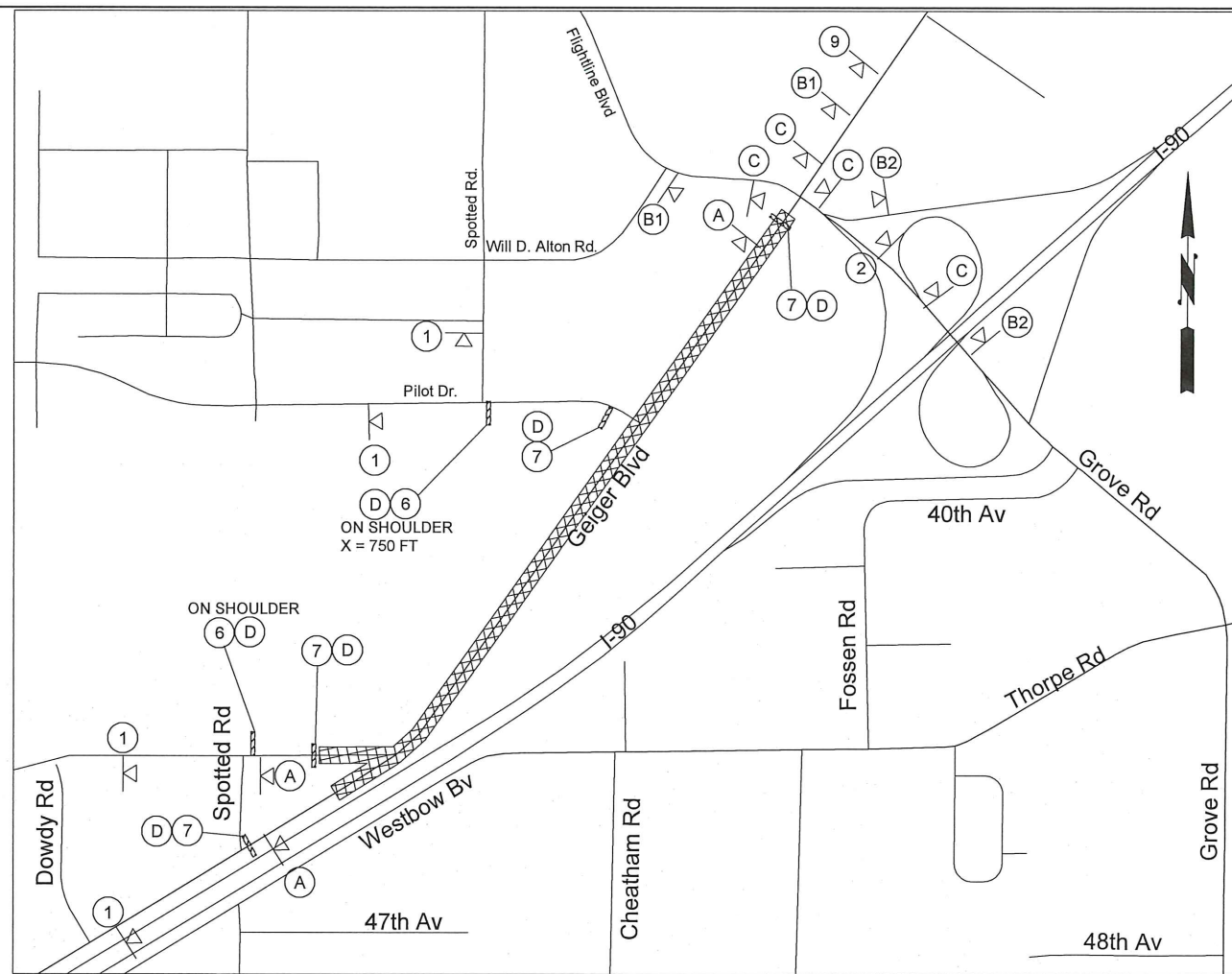
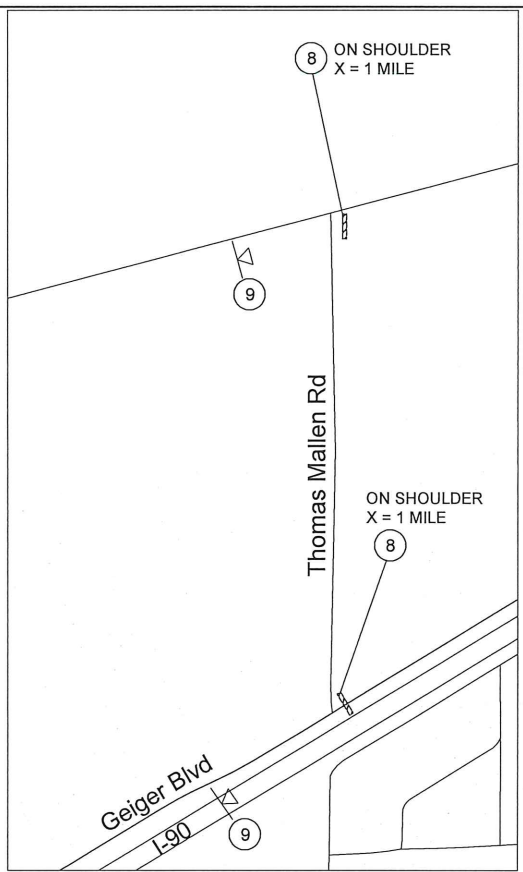
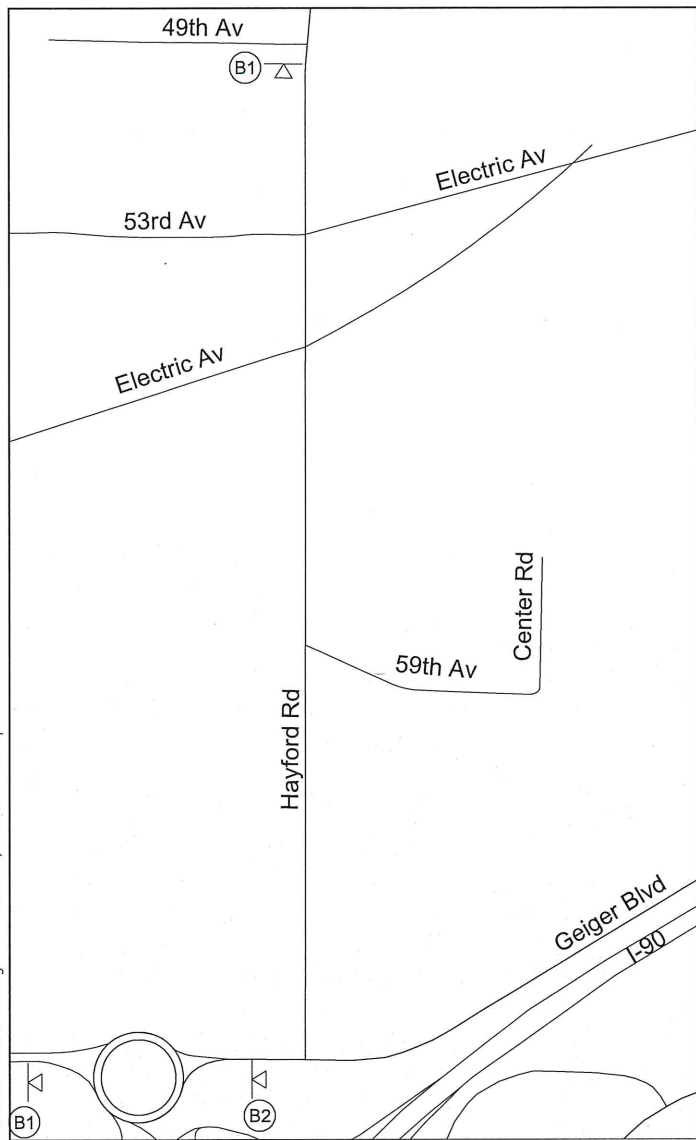
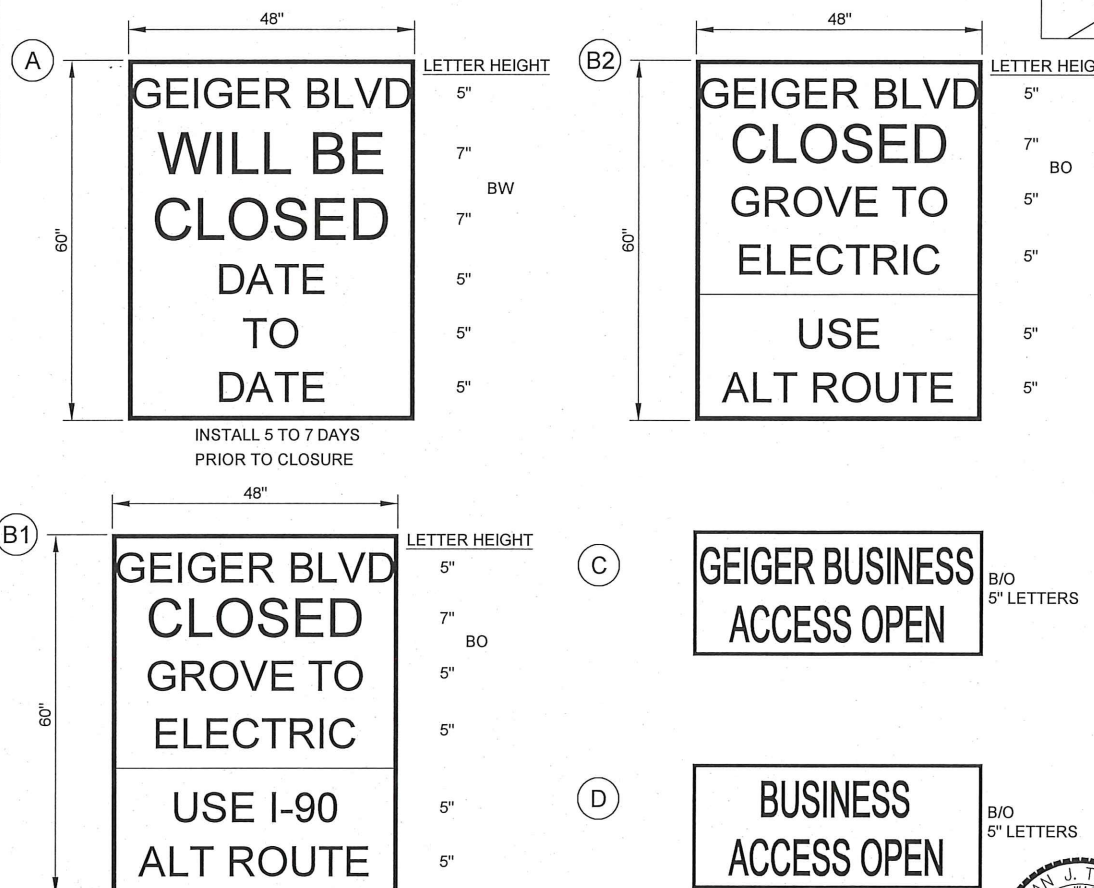


I:_Civil_3D Projects\CRP32444 GEIGER PHASE 2\DRAWINGS\CRP32444 Geiger Traffic Control.dwg Jun 11, 2020 3:56pm

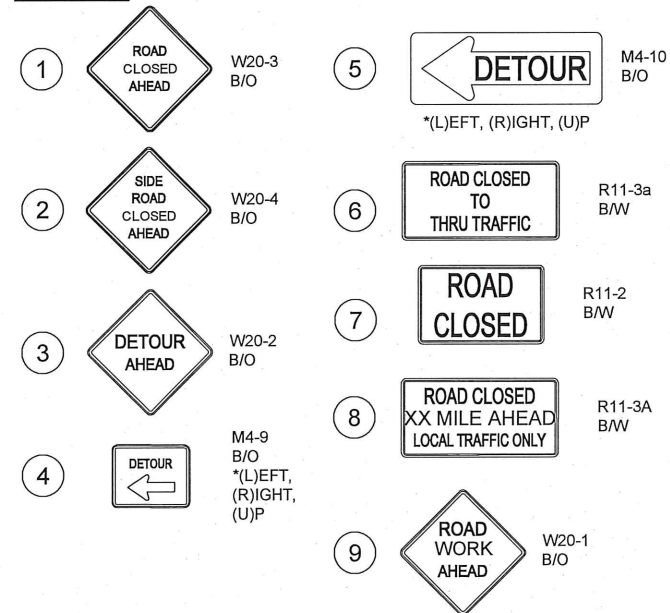


PHASE 1

SPECIAL SIGNS:



SIGNS:



NOTES:

- ALL SIGNS ON COUNTY ROADS SHALL BE CONVENTIONAL ROAD SIZES PER M.U.T.C.D., DIAMOND SHAPED CONSTRUCTION SIGNS SHALL BE 48" X 48" ON ROADS WITH SPEED LIMITS 45 MPH OR GREATER.
- ALL CONSTRUCTION SIGNS IN PLACE LONGER THAN 3 DAYS SHALL BE CLASS A CONSTRUCTION SIGNS.
- IF ROAD SURFACE HAS BEEN ALTERED AND IS OPEN TO ANY TRAFFIC, ROAD CONDITION SIGNS (ABRUPT LANE EDGE, LOOSE GRAVEL, BUMP, ETC.) WITH "MOTORCYCLES USE EXTREME CAUTION" PLAQUES SHALL BE INSTALLED AT ALL ENTRANCES TO THE CONSTRUCTION ZONE.
- THE CONTRACTOR SHALL SUBMIT ADDITIONAL TRAFFIC CONTROL PLANS TO THE ENGINEER FOR REVIEW FOR CONTRACT WORK NOT COVERED BY THE TRAFFIC CONTROL PLANS INCLUDED. THIS TRAFFIC CONTROL WILL BE INCIDENTAL TO THE LUMP SUM TRAFFIC CONTROL ITEM.
- CONTRACTOR SHALL MAINTAIN PUBLIC ACCESS TO ALL BUSINESSES FOR THE DURATION OF THE PROJECT. BOTH DRIVEWAY APPROACHES TO THE FLYING J SHALL REMAIN OPEN. THE FLYING J HAS AGREED TO COORDINATE WITH THE CONTRACTOR TO ALLOW A DRIVEWAY CLOSURE FOR ONE DAY DURING PAVING. ALL COSTS ASSOCIATED WITH THIS ARE INCIDENTAL.
- CONTRACTOR SHALL NOTIFY FIRE DISPATCH, FIRE DISTRICTS, SCHOOL DISTRICT, AMERICAN MEDICAL RESPONSE, AND SHERIFFS DISPATCH A MINIMUM OF 5 DAYS PRIOR TO ROAD CLOSURE.
- USE NUMBER OF BARRICADES NEEDED TO BLOCK ENTIRE ROAD AT ROAD CLOSURE POINTS.
- THE CONTRACTOR SHALL OBTAIN PERMITS AND/OR NOTIFY OUTSIDE AGENCIES PRIOR TO SETTING UP TRAFFIC CONTROL IN THEIR JURISDICTIONS.
 - WSDOT - OBTAIN RIGHT OF WAY PERMIT TO INSTALL SIGNS IN WSDOT RIGHT OF WAY.
 - SPOKANE INTERNATIONAL AIRPORT (SIA) - NOTIFY SIA 1 WEEK PRIOR TO INSTALLING SIGNS ON PILOT, SPOTTED, OR FLIGHTLINE. COUNTY WILL PROVIDE SIA CONTACT INFORMATION ON REQUEST.
 - CITY OF SPOKANE - OBTAIN ROAD OBSTRUCTION PERMIT TO CLOSE GEIGER.

LEGEND

- TEMPORARY SIGN LOCATION
- TYPE 3 BARRICADE(S)
- WORK ZONE AREA
- DRUMS

SIGN SPACING = X (FEET)

ROAD TYPE	SPEED LIMIT	SPACING
RURAL HIGHWAYS	60 / 65 MPH	800' ±
RURAL ROADS	45 / 55 MPH	500' ±
URBAN ARTERIALS	35 / 40 MPH	350' ±
URBAN STREETS, RESIDENTIAL AREAS, & BUSINESS DISTRICTS	25 / 30 MPH	200' ± (2)

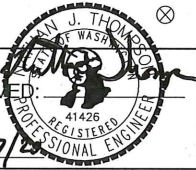
ALL SIGNS ARE BLACK ON FLORESCENT ORANGE (TYPE X SHEETING) UNLESS OTHERWISE DESIGNATED.

NO.	DATE	BY	CHKD.	APPR.	REVISION DESCRIPTION

BUILD #: 9932(062) LA9537
 DRAWN BY: J.M. 5/15/2020
 DESIGNED BY: H.D. 5/15/2020
 CHECKED BY: N.T. 5/15/2020

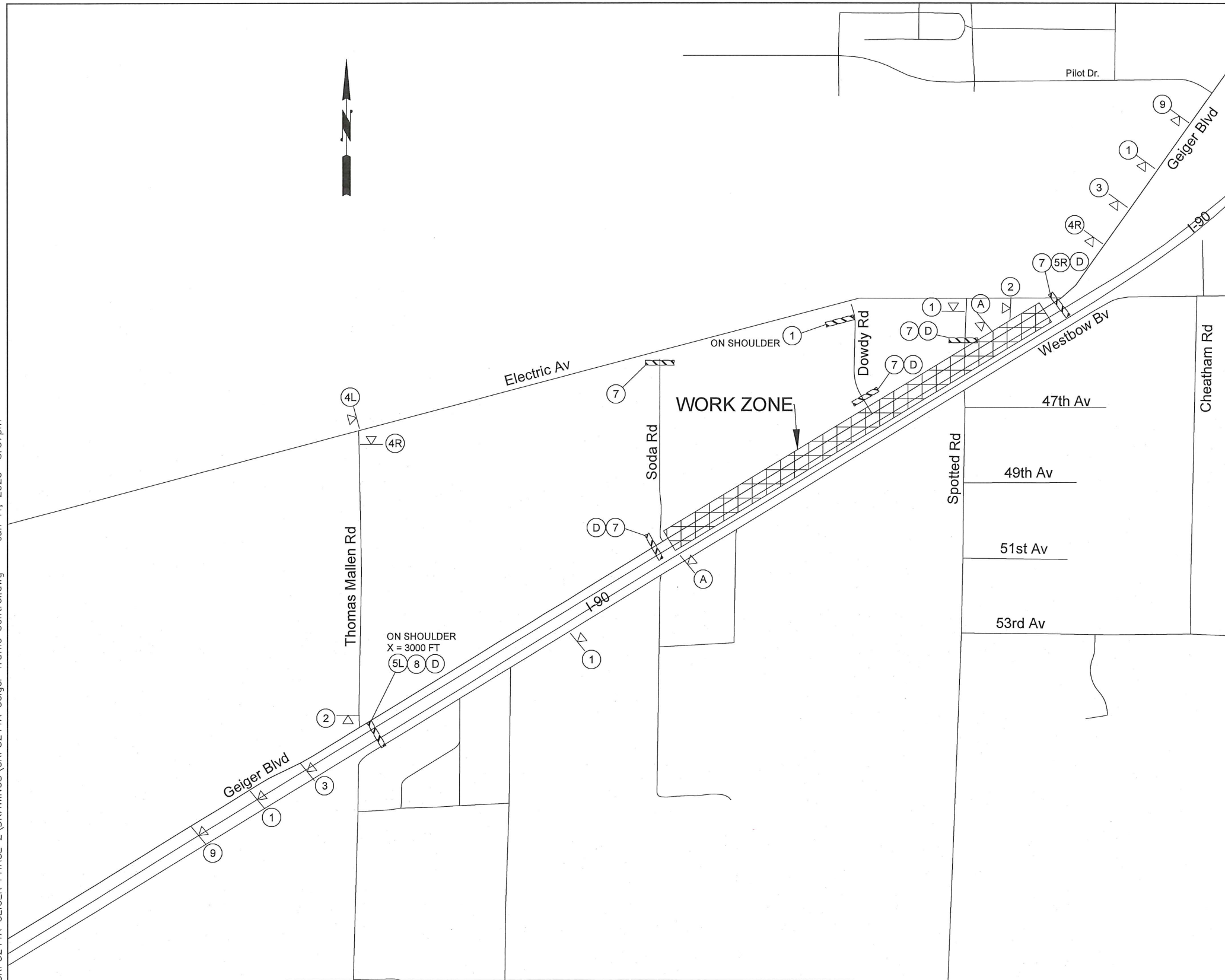
Spokane County
 Spokane County Department of Public Works
 1026 West Broadway Avenue,
 Spokane WA 99260-0170
 (509) 477-3600

APPROVED:
 TRAFFIC ENGINEER
 Date: 6/7/20



COUNTY ROAD PROJECT No. 3244A
GEIGER BOULEVARD
 FROM SODA ROAD TO GROVE
 TRAFFIC CONTROL PLAN

I:_Civil_3D_Projects\CRP3244A_GEIGER PHASE 2\DRAWINGS\CRP3244A Geiger Traffic Control.dwg Jun 11, 2020 3:57pm

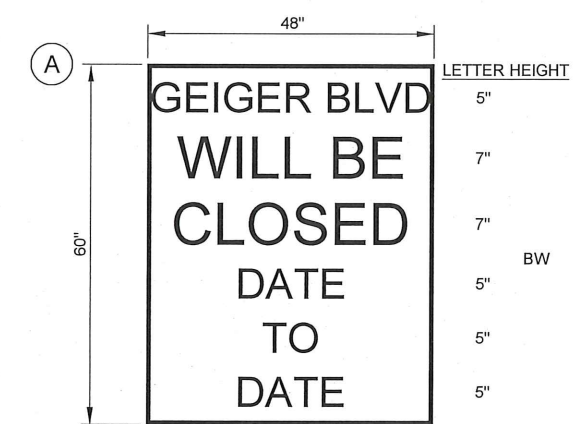


PHASE 2

SIGNS:

- 1 W20-3 B/O
- 2 W20-4 B/O
- 3 W20-2 B/O
- 4 M4-9 B/O *(L)EFT, (R)IGHT, (U)P
- 5 M4-10 B/O *(L)EFT, (R)IGHT, (U)P
- 6 R11-3a B/W
- 7 R11-2 B/W
- 8 R11-3A B/W
- 9 W20-1 B/O

SPECIAL SIGNS:



INSTALL 5 TO 7 DAYS PRIOR TO CLOSURE



SIGN SPACING = X (FEET)		
RURAL HIGHWAYS	60 / 65 MPH	800' ±
RURAL ROADS	45 / 55 MPH	500' ±
URBAN ARTERIALS	35 / 40 MPH	350' ±
URBAN STREETS, RESIDENTIAL AREAS, & BUSINESS DISTRICTS	25 / 30 MPH	200' ± (2)

ALL SIGNS ARE BLACK ON FLORESCENT ORANGE (TYPE X SHEETING) UNLESS OTHERWISE DESIGNATED.

LEGEND

- TEMPORARY SIGN LOCATION
- TYPE 3 BARRICADE(S)
- WORK ZONE AREA

NO.	DATE	BY	CHKD.	APPR.	REVISION DESCRIPTION

BUILD #:	9932(062)	LA9537
DRAWN BY:	J.R.	5/15/2020
DESIGNED BY:	H.D.	5/15/2020
CHECKED BY:	N.T.	5/15/2020

Spokane County Department of Public Works
 1026 West Broadway Avenue,
 Spokane WA 99260-0170
 (509) 477-3600

APPROVED
 TRAFFIC ENGINEER
 Date: 6/17/20

COUNTY ROAD PROJECT No. 3244
GEIGER BOULEVARD
 FROM HAYFORD ROAD TO SODA ROAD
 TRAFFIC CONTROL PLAN