

GEIGER BOULEVARD INFRASTRUCTURE IMPROVEMENTS

INFRASTRUCTURE STRENGTHENING THE REGIONAL ECONOMY

Land use planning efforts around Geiger Boulevard, immediately west of the City of Spokane and adjacent to major inland ports such as the Spokane International Airport, have resulted in attracting industrial, commercial, and residential development in recent years. Many of these projects anticipate building out as early as 2018.

Of these proposed developments, Project Rose is significant. The project is a four-floor, 2.6 million square foot warehouse and distribution facility. It is estimated that Project Rose will create 2,900 new jobs. In addition to new industrial and commercial developments, there is a mix of single family and multi-family developments are proposed in the area, adding 1,350 new residents.

Geiger Boulevard's current configuration will fail once traffic, especially heavy truck activity, increases along the corridor.

To retain existing jobs and continue to attract new economic generators; thereby creating new jobs. It is imperative that Geiger Boulevard and connecting facilities are upgraded.

Project components include:

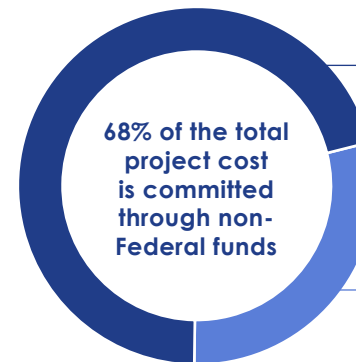
- Upgrading Geiger Boulevard from a 2-lane light bituminous (chip seal) surface road to a 3-lane asphalt roadway;
- Installing a continuous shared-use pathway to connect residential and STA facilities to new commercial and industrial development along Geiger Boulevard;
- Signalizing a key intersection;
- Installing utilities (i.e. water and sewer) along Geiger, making vacant land development ready;
- Upgrading the Medical Lake and Grove Road interchanges; and
- Providing for regional transit facilities along the corridor that would connect to the new West Plains Transit Center.

To date, \$30.4 million has been committed by project partners and another \$14.3 million is required to realize the full multi-modal corridor program.

PROJECT PARTNERS



West Plains/Airport Area Public Development Authority

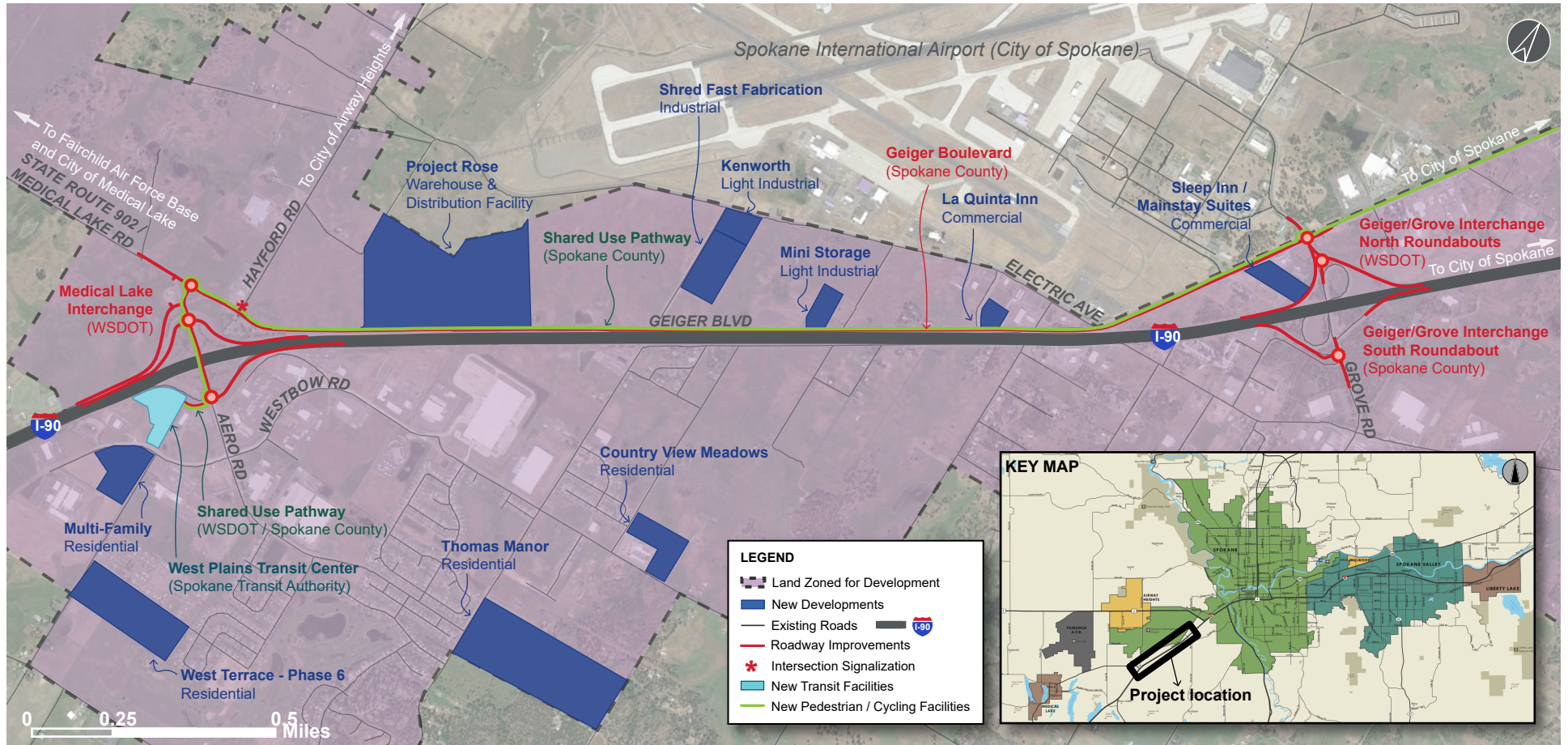


\$30.4M in Project Partner Committed Non-Federal Funds:

- WSDOT
- Spokane County
- City of Spokane
- Tax Increment Financing
- Private Development Entities
- West Plains Public Development Authority

\$14.3M BUILD Grant Request

GEIGER BOULEVARD PROJECT OVERVIEW



New Industrial / Commercial Developments	# of est. Employees
Project Rose	2,963
Shred Fast Fabrication	12
Mini Storage	3
La Quinta Inn	41
Sleep Inn	44
Kenworth	150
Total New Jobs	3,213

New Residential Developments	# of Units	# of est. Residents
Multi-Family	200	300
West Terrace	90	198
Thomas Manor	207	510
Country View Meadows	138	345
Total New Residents	635	1,353

Quick Fact: There are more than 400 acres of undeveloped industrial/commercial lands along Geiger Boulevard. This could accommodate 6 more Project Rose size developments.

Geiger Boulevard improvements would support:



3,213
new jobs



1,353
new residents



Let's Talk Geiger Boulevard:
Commissioner Al French, Spokane County
 (509) 477-2265
AFrench@spokanecounty.org