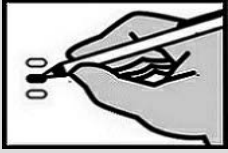
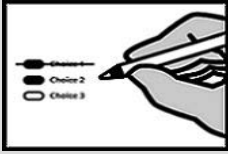


**Sample Ballot
Spokane County Washington
August 6, 2024 Primary Election**



Completely fill in the oval to the left of your choice. Vote for only one candidate in each contest. Use a dark blue or black pen.

Unless specifically allowed by law, more than one vote for a contest will be an overvote and no votes for that ballot contest will be counted. To vote for a candidate whose name is not printed on the ballot, write the name on the line provided and fill in the oval.



If you make a correction or mismatch your ballot, draw a line through the entire response. You then have the option of making another choice.

In order for your ballot to be counted, it must either be postmarked no later than election day or deposited at a ballot drop box no later than 8:00 p.m. on election day, August 6, 2024.

For a list of the people and organizations that donated to state and local candidates and ballot measure campaigns, visit www.pdc.wa.gov.

READ: Each candidate for partisan office may state a political party that he or she prefers. A candidate's preference does not imply that the candidate is nominated or endorsed by the party, or that the party approves of or associates with that candidate.

Federal - Partisan Office

U.S. Senator

- Mel Ram
(Prefers Republican Party)
- Dr Raul Garcia
(Prefers GOP Party)
- David Tilton
(Prefers Non-Partisan Party)
- Maria Cantwell
(Prefers Democratic Party)
- Chuck Jackson
(Prefers Independent Party)
- Isaac A Holyk
(Prefers Republican Party)
- Henry Clay Dennison
(Prefers Socialist Workers Party)
- Scott Nazarino
(Prefers Republican Party)
- Paul Lawrence Giesick
(Prefers Democratic Party)
- Thor Amundson
(Prefers Independent Party)
- Goodspaceguy
(Prefers Republican Party)
- _____

Congressional District 5 - Partisan Office

U.S. Representative

- Rick Valentine Flynn
(Prefers Republican Party)
- Rene' Holaday
(Prefers Republican Party)
- Jacquelin Maycumber
(Prefers Republican Party)
- Jonathan D Bingle
(Prefers Republican Party)
- Carmela Conroy
(Prefers Democratic Party)
- Ann Marie Danimus
(Prefers Democratic Party)
- Matthew Welde
(Prefers Democratic Party)
- Bernadine Bank
(Prefers Democratic Party)
- Michael Baumgartner
(Prefers Republican Party)
- Brian Dansel
(Prefers Republican Party)
- Bobbi Bennett-Wolcott
(Prefers Democratic Party)
- _____

State of Washington - Partisan Office

Governor

- Jim Daniel
(Prefers Republican Party)
- Cassandra Magdalene Hanson
(Prefers Democratic Party)
- Jeff Curry
(Prefers Independent Party)
- Alex Tsimerman
(Prefers Standup-America Party)
- Mark Mullet
(Prefers Democratic Party)
- Martin Lee Wheeler
(Prefers Republican Party)
- Jennifer Hoover
(Prefers Republican Party)
- Andre Stackhouse
(Prefers Green Party)
- EL'ona Kearney
(Prefers Democratic Party)
- Ricky Anthony
(Prefers Democratic Party)
- Bob Ferguson
(Prefers Democratic Party)
- Chaytan Inman
(Prefers Democratic Party)
- Michael DePaula
(Prefers Libertarian Party)
- Dave Reichert
(Prefers Republican Party)
- Don L Rivers
(Prefers Democratic Party)
- Jim Clark
(States No Party Preference)
- Fred Grant
(Prefers Democratic Party)
- Leon A Lawson
(Prefers Trump Republican Party)
- Edward Cale IV
(Prefers Democratic Party)
- Frank Dare
(Prefers Independent Party)
- William Combs
(Prefers Independent Party)
- Alan Makayev
(Prefers Nonsense Busters Party)
- Brian Bogen
(Prefers Nonpartisan Party)
- A.L. Brown
(Prefers Republican Party)
- Brad Mjelde
(States No Party Preference)
- Bill Hirt
(Prefers Republican Party)
- Rosetta Marshall-Williams
(Prefers Independence Party)
- Semi Bird
(Prefers Republican Party)
- _____

State of Washington - Partisan Office

Lt. Governor

- Patrick "Pat" Harman
(Prefers Liberal Republican Party)
- David Griffin
(Prefers Democratic Party)
- Bob Hagglund
(Prefers Republican Party)
- Dan Matthews
(Prefers Republican Party)
- Denny Heck
(Prefers Democratic Party)
- _____

Secretary of State

- Marquez Tiggs
(Prefers Democratic Party)
- Dale Whitaker
(Prefers Republican Party)
- Damon Townsend
(Prefers No Labels Party)
- Steve Hobbs
(Prefers Democratic Party)
- _____

State Treasurer

- Mike Pellicciotti
(Prefers Democratic Party)
- Sharon Haneke
(Prefers Republican Party)
- _____

State Auditor

- Matt Hawkins
(Prefers Republican Party)
- Pat (Patrice) McCarthy
(Prefers Democratic Party)
- _____

Attorney General

- Pete Serrano
(Prefers Republican Party)
- Nick Brown
(Prefers Democratic Party)
- Manka Dhingra
(Prefers Democratic Party)
- _____

State of Washington - Partisan Office

Commissioner of Public Lands

- Allen Lebovitz
(Prefers Democratic Party)
- Jaime Herrera Beutler
(Prefers Republican Party)
- Dave Upthegrove
(Prefers Democratic Party)
- Sue Kuehl Pederson
(Prefers Republican Party)
- Patrick DePoe
(Prefers Democratic Party)
- Jeralee Anderson
(Prefers Democratic Party)
- Kevin Van De Wege
(Prefers Democratic Party)
- _____

State of Washington - Nonpartisan Office

Superintendent of Public Instruction

- Reid Saaris
- Chris Reykdal
- John Patterson Blair
- David Olson
- _____

State of Washington - Partisan Office

Insurance Commissioner

- Patty Kuderer
(Prefers Democratic Party)
- Chris D. Chung
(Prefers Democratic Party)
- Jonathan Hendrix
(States No Party Preference)
- Bill Boyd
(Prefers Democratic Party)
- John Pestinger
(Prefers Democratic Party)
- Tim Verzal
(States No Party Preference)
- Phil Fortunato
(Prefers Republican Party)
- Justin Murta
(Prefers Republican Party)
- _____

Only registered voters in **Legislative District 3** are eligible to vote on the following

Legislative District 3 - Partisan Office

State Senator

- Marcus Riccelli
(Prefers Democratic Party)
- _____

State Representative Pos. 1

- Natasha Hill
(Prefers Democratic Party)
- Tony Kiepe
(Prefers Republican Party)
- Ben Stuckart
(Prefers Democratic Party)
- _____

State Representative Pos. 2

- Timm Ormsby
(Prefers Democratic Party)
- _____

Only registered voters in **Legislative District 4** are eligible to vote on the following

Legislative District 4 - Partisan Office

State Senator

- Paige Scott
(Prefers Democratic Party)
- Pam Haley
(Prefers Republican Party)
- Al Merkel
(Prefers Republican Party)
- Leonard Christian
(Prefers Republican Party)
- Mike Kelly
(Prefers Republican Party)
- Miguel Valencia
(Prefers Democratic Party)
- _____

State Representative Pos. 1

- Kitten Wildes Beeler
(Prefers Green Party)
- Suzanne Schmidt
(Prefers Republican Party)
- Kristopher Pockell
(States No Party Preference)
- _____

State Representative Pos. 2

- Ed "Woody" Wood
(Prefers Democratic Party)
- Brandi Peetz
(Prefers Republican Party)
- Stephen T. Major
(Prefers Republican Party)
- Michael A. Schmidt
(Prefers Republican Party)
- Ted Cummings
(Prefers Democratic Party)
- Rob Chase
(Prefers Republican Party)
- _____

Only registered voters in **Legislative District 6** are eligible to vote on the following

Legislative District 6 - Partisan Office

State Representative Pos. 1

- Mike Volz
(Prefers Republican Party)
- Steven McCray II
(Prefers Democratic Party)
- _____

State Representative Pos. 2

- Jenny Graham
(Prefers Republican Party)
- Michaela Kelso
(Prefers Democratic Party)
- _____

Only registered voters in **Legislative District 7** are eligible to vote on the following

Legislative District 7 - Partisan Office

State Representative Pos. 1

- Teagan Levine
(Prefers Republican Party)
- Andrew Engell
(Prefers Republican Party)
- Soo Ing-Moody
(Prefers Republican Party)
- _____

Only registered voters in **Legislative District 7** are eligible to vote on the following

Legislative District 7 - Partisan Office

State Representative Pos. 2

- Ronald L McCoy
(Prefers Republican Party)
- Hunter Abell
(Prefers Republican Party)
- Pat Bell
(Prefers Republican Party)
- Paul "Rocky" Dean
(Prefers Democratic Party)
- _____

Only registered voters in **Legislative District 9** are eligible to vote on the following

Legislative District 9 - Partisan Office

State Senator

- Mark G. Schoesler
(Prefers GOP Party)
- _____

State Representative Pos. 1

- Mary Dye
(Prefers GOP Party)
- Patrick Miller
(Prefers Democratic Party)
- _____

State Representative Pos. 2

- Pam Kohlmeier
(Prefers Democratic Party)
- Joe Schmick
(Prefers Republican Party)
- Arianna Arends
(Prefers Democratic Party)
- _____

Spokane County - Partisan Office

Only registered voters in **County Commissioner District 1** are eligible to vote on the following

Commissioner District 1

- Chris Jordan
(Prefers Democratic Party)
- _____

Only registered voters in **County Commissioner District 3** are eligible to vote on the following

Commissioner District 3

- Josh Kerns
(Prefers Republican Party)
- _____

Only registered voters in **County Commissioner District 5** are eligible to vote on the following

Commissioner District 5

- Molly Marshall
(Prefers Democratic Party)
- Al French
(Prefers Republican Party)
- _____

Judicial - Nonpartisan Office

Supreme Court Justice Position 2

- Todd A. Bloom
- Sal Mungia
- David R Shelvey
- Dave Larson
- _____

Superior Court Judge Position 11

- F. Dayle Andersen
- Andrew B. Van Winkle
- Timothy B Fennessy
- Jerry Scharosch
- _____

Only registered voters in the **City of Airway Heights** are eligible to vote on the following

City of Airway Heights

Proposition No. 1
City of Airway Heights
Public Safety Operations and City Services Levy

The City Council of the City of Airway Heights passed Ordinance No. C-1030 concerning funding for public safety services and City operations.

To fund public safety services, operations, maintenance and capital, and other City services, this proposition increases the City's regular property tax levy by \$1.00/\$1,000, for a maximum rate of \$2.39/\$1,000 for collection in 2025; sets the limit factor for the City's total regular property tax levy for 2026-2030 to 6%; and authorizes the 2030 levy amount as the basis to calculate subsequent levies (RCW 84.55). Qualifying seniors, veterans, and others would be exempt (RCW 84.36).

Should this proposition be approved?

 Yes
 No

Only registered voters in the **City of Cheney** are eligible to vote on the following

City of Cheney

Proposition No. 1
City of Cheney
Proposition Submitted by the Cheney City Council for Emergency Medical Services - Six Year Levy

Will the City of Cheney, Washington be authorized, pursuant to RCW 84.52.069, to renew the imposition of regular property tax levies upon the taxable property within the City of Cheney at a rate of fifty cents [\$0.50] per one thousand dollars of assessed valuation for each of six consecutive years commencing in 2025 for the purpose of funding emergency medical care and services?

- Yes
- No

Only registered voters in the **Fire District No. 4** are eligible to vote on the following

Spokane County Fire Protection District No. 4

Proposition No. 1
Spokane County Fire Protection District No. 4
Property Tax Levy for Fire Protection and Emergency Medical Services

The Board of Spokane County Fire Protection District No. 4 adopted Resolution No. 24-02 concerning a proposition to maintain and adequately fund District operations.

This proposition authorizes the District to restore its regular property tax levy to \$1.50 per \$1,000 of assessed value to be assessed in 2024 and collected in 2025. The funds will maintain and improve fire protection, emergency medical services and facilities, replace apparatus and equipment, and provide for firefighter safety. The maximum allowable levy in 2024 shall serve as the base for subsequent levy limitations as provided by chapter 84.55 RCW.

Should this proposition be:

 Approved
 Rejected

Only registered voters in the **Fire District No. 9** are eligible to vote on the following

Spokane County Fire Protection District No. 9

Proposition No. 1
Spokane County Fire Protection District No. 9
Replacement Maintenance and Operation Levy

The Board of Commissioners of Spokane County Fire Protection District No. 9 adopted Resolution No. 24-8 concerning a proposition to meet the District's maintenance and operation needs. This proposition would authorize the District to levy the following taxes, in place of an existing levy, upon all taxable property within the District, for support of the District's Expense Fund expenditures for maintenance, operations and emergency medical services:

Levy Year	Collection Year	Approximate Levy Rate per \$1,000 Assessed Value	Levy Amount
2024	2025	\$1.47	\$13,650,000
2025	2026	\$1.48	\$14,200,000
2026	2027	\$1.49	\$14,800,000

Should this proposition be approved?

 Levy Yes
 Levy No

Only registered voters in **Fire District No. 13** are eligible to vote on the following

Spokane County Fire Protection District No. 13

Proposition No. 1
Spokane County Fire Protection District No. 13
Proposition Restoring Property Tax Levy for Fire Protection and Emergency Medical Services

The Board of Commissioners of Spokane County Fire Protection District 13 adopted Resolution No. 2024-3 concerning a proposition to adequately fund Fire and EMS operations, training, and capital assets.

This proposition restores the District's 2024 regular property tax levy to \$1.10 per \$1,000.00 of assessed valuation for collection in 2025 and authorizes setting a 3% limit factor for each of the three succeeding years. Per chapter 84.55 RCW, the maximum allowable levy in 2027 for collection in 2028 shall serve as the basis for subsequent levy limitations.

Should this proposition be:

- Approved
- Rejected

Precinct Committee Officer

For this office only: In order to vote for precinct committee officer, a partisan office, you must affirm that you are a Democrat or a Republican and may vote only for one candidate from the party you select. Your vote for a candidate affirms your affiliation with the same party as the candidate. This preference is private and will not be matched to your name or shared.

Election of Political Party Precinct Committee Officer

- I affirm I am a Democrat
- I affirm I am a Republican

August 6, 2024 Primary Election Information

If you have changed your residence address, you may update your address and receive an updated ballot by visiting VoteWA.gov or contacting our office until Monday, July 29, 2024. Beginning on Tuesday, July 30, 2024, you may update your registration in person and receive an updated ballot at a Voter Service Center.

Contact Information

Spokane County Elections
Online: www.spokanecounty.org/elections
Email: elections@spokanecounty.gov
Phone: 509-477-2320

Ballot Drop Box Locations

Ballot Drop Boxes are available starting July 18, 2024, and close promptly at 8:00 p.m. on election day - August 6, 2024:

- Airway Heights Library - 1213 S Lundstrom St
- Argonne Library - 4322 N Argonne Rd
- CenterPlace - 2426 N Discovery Pl
- Central Library - 906 W Main Ave
- Cheney Library - 610 First St
- Deer Park Library - 208 S Forest Ave
- Fairfield Library - 305 E Main St
- Elections Office - 1033 W Gardner Ave
- Hillyard Library - 4110 N Cook St
- Indian Trail Library - 4909 W Barnes Rd
- Latah Town Hall - 108 Market St
- Liberty Lake Library - 23123 E Mission Ave
- Liberty Park Library - 402 S Pittsburg St
- Medical Lake Library - 321 E Herb St
- Millwood City Hall - 9103 E Frederick Ave
- Moran Prairie Library - 6004 S Regal St
- North Spokane Library - 44 E Hawthorne Rd
- Otis Orchards Library - 22324 E Wellesley Ave
- Rockford Town Hall - 20 W Emma St
- Shadle Park Library - 2111 W Wellesley Ave
- South Hill Library - 3324 S Perry St
- Spangle Town Hall - 115 W 2nd St
- Spokane County Courthouse - 1116 W Broadway Ave
- Spokane Valley Library - 22 N Herald Rd
- STA Plaza - 701 W Riverside Ave
- The Hive - 2904 E Sprague Ave
- Waverly Town Hall - 255 N Commercial St

Voter Service Centers

Voters may register to vote, drop off ballots, get replacement ballots, use an Accessible Voting Unit, or receive other assistance as needed at:

- **Downtown Spokane**
Elections Office - 1033 W Gardner Ave
Monday - Friday: 8:30 a.m. to 4:00 p.m.
Election day, August 6th: 7:00 a.m. to 8:00 p.m.
- **Spokane Valley**
CenterPlace - 2426 N Discovery Pl
Election day, August 6th: 7:00 a.m. to 8:00 p.m.

In order for your ballot to be counted, it must be either postmarked no later than election day or deposited at a ballot drop box no later than 8:00 p.m. on election day. If depositing your ballot in a US Postal Service box, Postage is Prepaid - no postage is required.