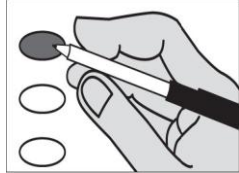


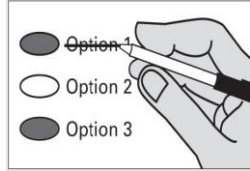
**Sample Ballot**  
**Spokane County Washington**  
**April 17, 2012 Special Election**

Instructions  
 Marking Your Ballot



Completely fill in the oval to the left of your choice. Use a dark pen. Do not use pencil.

Unless specifically allowed by law, more than one vote for a ballot measure will be an over vote and no votes for that office or ballot measure will be counted.



If you make a correction, draw a line through the entire response. You then have the option of making another choice if you wish.

In order for your ballot to be counted, it must be either postmarked or deposited at a designated deposit site no later than 8:00 P.M on Election Day. A list of deposit sites may be found at [www.spokanecounty.org/elections](http://www.spokanecounty.org/elections).

**Measure No. 1**  
**Spokane Public Facilities District**  
**Extension of the District Sales/Use and Hotel/Motel Tax.**

The Spokane Public Facilities District Board of Directors adopted Resolution No. 11-04 A, concerning a proposition to reauthorize and extend the District's existing sales and use tax and hotel/motel tax from September 1, 2033 to September 1, 2043, to improve the Convention Center Exhibit Hall, the adjacent Centennial Trail and Riverbank and add seats to the Spokane Arena, with the taxes terminated upon final payment of the District debt for the Convention Center and the above projects according to Chapter 36.100 RCW. Should this proposition be:

- Approved  
 Rejected

**Proposition No. 1**  
**Town of Rockford**  
**2013 Fire Protection Services Levy**

The Rockford Town Council enacted Resolution 12-1R concerning a proposition to finance 2013 fire protection services. This proposition would authorize the Town of Rockford to levy an excess property tax in 2013 on all taxable property within the Town of Rockford at an approximate rate of \$0.51 per \$1,000 of assessed value to raise \$12,500 to be used to provide adequate services in 2013. This levy replaces an expiring levy, which the Town has collected in past years. Should this proposition be approved?

- Yes  
 No

**Proposition No. 1**  
**Reardan-Edwall School District No. 9**  
**Bonds to Renovate, Improve and Construct School Facilities**

The Board of Directors of Reardan-Edwall School District No. 9 adopted Resolution No. 003-2011/12 concerning a proposition to renovate, improve and construct school facilities. This proposition would authorize the District to renovate the Elementary School, Middle/High School, Smith Gym and AG Building, make District-wide energy efficiency, safety, security, technology and infrastructure improvements, construct additional Middle/High School classrooms and cafeteria/multipurpose areas, make ADA improvements, and improve access and parking; issue no more than \$18,400,000 of general obligation bonds maturing within 25 years; and levy annual excess property taxes to repay the bonds, all as provided in Resolution No. 003-2011/12. Should this proposition be:

- Approved  
 Rejected

**Proposition No. 1**  
**Deer Park School District No. 414-200-61**  
**Maintenance and Operation Replacement Levy**

The Board of Directors of Deer Park School District No. 414-200-61 adopted Resolution No. 4-2011-12, concerning a proposition to finance maintenance and operation expenses. This proposition would authorize the District to meet the educational needs of its students by levying the following excess taxes, in place of an expiring levy, on all taxable property within the District, for support of the District's General Fund educational maintenance and operation expenses:

Collection Year	Approximate Levy	
	Rate/\$1,000	Assessed Value
2013	\$2.46	\$1,962,665
2014	\$2.46	\$2,001,915
2015	\$2.46	\$2,041,953

all as provided in Resolution No. 4-2011-12. Should this proposition be approved?

- Levy Yes  
 Levy No

**Proposition No. 1**  
**Riverside School District No. 416-62**  
**Replacement Educational Programs and Operation Levy**

The Board of Directors of Riverside School District No. 416-62 adopted Resolution No. 02-12-01, concerning a proposition to support educational programs and operation expenses. This proposition would authorize the District to levy the following excess taxes, in place of an expiring levy, upon all taxable property within the District, for support of the District's General Fund educational programs and operation expenses:

Levy Year	Collection Year	Approximate Levy	
		Rate/\$1,000	Assessed Value
2012	2013	\$3.42	\$2,855,000
2013	2014	\$3.42	\$2,883,000
2014	2015	\$3.42	\$2,911,000

all as provided in Resolution No. 02-12-01. Should this proposition be approved?

- Levy Yes  
 Levy No