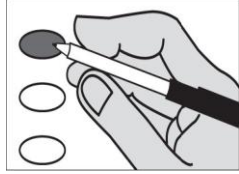
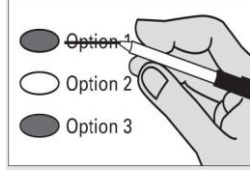


Instructions
 Marking Your Ballot



Completely fill in the oval to the left of your choice.
 Use a dark pen.
 Unless specifically allowed by law, more than one vote for an office or ballot measure will be an overvote and no votes for that office or ballot measure will be counted. Vote for one candidate per office. To vote for a candidate whose name is not printed on the ballot, write the candidates name on the line provided and fill in the oval.

Correcting Your Ballot



To make a correction, draw a line through the entire response. You then have the option of making another choice if you wish.
 In order for your ballot to be counted, it must be either postmarked or deposited at a designated deposit site no later than 8:00 p.m. on Election Day (November 4). A list of Ballot Drop Box locations may be found at www.spokanecounty.org/elections.

Begin Voting Here

Initiatives to the People

Initiative Measure No. 1351

Initiative Measure No. 1351 concerns K-12 education. This measure would direct the legislature to allocate funds to reduce class sizes and increase staffing support for students in all K-12 grades, with additional class-size reductions and staffing increases in high-poverty schools.

Should this measure be enacted into law?

- Yes
 No

Initiatives to the Legislature

Initiative Measure No. 591

Initiative Measure No. 591 concerns firearms. This measure would prohibit government agencies from confiscating guns or other firearms from citizens without due process, or from requiring background checks on firearm recipients unless a uniform national standard is required.

Should this measure be enacted into law?

- Yes
 No

Initiative Measure No. 594

Initiative Measure No. 594 concerns background checks for firearm sales and transfers. This measure would apply currently used criminal and public safety background checks by licensed dealers to all firearm sales and transfers, including gun show and online sales, with specific exceptions.

Should this measure be enacted into law?

- Yes
 No

Advisory Votes

**Advisory Vote No. 8
 Senate Bill 6505**

The legislature eliminated, without a vote of the people, agricultural excise tax preferences for various aspects of the marijuana industry, costing an estimated \$24,903,000 in the first ten years, for government spending. This tax increase should be:

- Repealed
 Maintained

**Advisory Vote No. 9
 Engrossed Substitute House Bill 1287**

The legislature imposed, without a vote of the people, the leasehold excise tax on certain leasehold interests in tribal property, costing an estimated \$1,298,000 in the first ten years, for government spending. This tax increase should be:

- Repealed
 Maintained

READ: Each candidate for partisan office may state a political party that he or she prefers. A candidate's preference does not imply that the candidate is nominated or endorsed by the party, or that the party approves of or associates with that candidate.

Federal – Partisan Office

U.S. Representative District 5

- Cathy McMorris Rodgers
 (Prefers Republican Party)
- Joseph (Joe) Pakootas
 (Prefers Democratic Party)
-

Legislative District 3 – Partisan Office

State Representative Pos 1

- Marcus Riccelli
 (Prefers Democratic Party)
- Tim Benn
 (Prefers Independent R Party)
-

State Representative Pos 2

- Timm Ormsby
 (Prefers Democratic Party)
- Paul Delaney
 (Prefers Libertarian Party)
-

Legislative District 4 – Partisan Office

State Representative Pos 1

- Two Year Term Short and Full
- Bob McCaslin
 (Prefers Republican Party)
- Diana Wilhite
 (Prefers Republican Party)
-

State Representative Pos 2

- Matt Shea
 (Prefers Republican Party)
- Josh Arritola
 (Prefers Republican Party)
-

Legislative District 6 – Partisan Office

State Senator

- Michael Baumgartner
 (Prefers Republican Party)
- Rich Cowan
 (Prefers Democratic Party)
-

Vote Both Sides of Ballot

Legislative District 6 – Partisan Office

State Representative Pos 1

- Kevin Parker
 (Prefers Republican Party)
- Donald Dover
 (Prefers Democratic Party)
-

State Representative Pos 2

- Jeff Holy
 (Prefers Republican Party)
- Ziggy Siegfried
 (Prefers Democratic Party)
-

Legislative District 7 – Partisan Office

State Senator

- Brian Dandel
 (Prefers Republican Party)
- Tony Booth
 (Prefers Republican Party)
-

State Representative Pos 1

- Shelly Short
 (Prefers Republican Party)
- James R. Apker
 (Prefers Libertarian Party)
-

State Representative Pos 2

- Joel Kretz
 (Prefers Republican Party)
- Ronnie Rae
 (Prefers Centralist Party)
-

Legislative District 9 – Partisan Office

State Representative Pos 1

- Susan Fagan
 (Prefers Republican Party)
-

State Representative Pos 2

- Joe Schmick
 (Prefers G.O.P. Party)
-

Spokane County – Partisan Office

County Commissioner District 3

- Al French
 (Prefers G.O.P. Party)
- Mary Lou Johnson
 (Prefers Democratic Party)
-

County Assessor

- Vicki Horton
 (Prefers Republican Party)
- Roger E. Trainor
 (Prefers Republican Party)
-

Spokane County – Partisan Office
County Auditor
 Vicky M. Dalton
(Prefers Democratic Party)
 Alene Lindstrand
(Prefers G.O.P Party)

County Clerk
Four Year Term Short and Full
 Timothy W. Fitzgerald
(Prefers Republican Party)
 Mary M. Wissink
(Prefers Democratic Party)

County Prosecuting Attorney
 Larry Haskell
(Prefers Republican Party)
 Breean L. Beggs
(Prefers Democratic Party)

County Sheriff
 Ozzie D. Knezovich
(Prefers Republican Party)
 Doug Orr
(Prefers Republican Party)

County Treasurer
 Rob Chase
(Prefers Republican Party)
 Amy Biviano
(Prefers Democratic Party)

Judicial – Nonpartisan Office
Supreme Court Justice Position No. 1
Two Year Unexpired Term
 Mary Yu

Supreme Court Justice Position No. 3
 Mary E. Fairhurst

Supreme Court Justice Position No. 4
 Eddie Yoon
 Charles W. Johnson

Supreme Court Justice Position No. 7
 Debra L. Stephens
 John (Zamboni) Scannell

Court of Appeals Division 3 District 1 Position No. 2
 Kevin M. Korsmo

Spokane County – Nonpartisan Office
District Court Judge Position No. 1
 Vance W. Peterson

District Court Judge Position No.2
 Chris Bugbee
 Sara B. Derr

District Court Judge Position No. 3
 Donna Wilson

District Court Judge Position No. 4
 Patti Connolly Walker

Spokane County – Nonpartisan Office
District Court Judge Position No. 5
 Richard Reiersen
 Gregory J. Tripp

District Court Judge Position No. 6
 Debra R. Hayes

District Court Judge Position No. 7
 Randy A. Brandt
 Aimee Maurer

District Court Judge Position No. 8
Four Year Term Short and Full
 Richard M. Leland
 Timothy D. Trageser

Public Utility District – Nonpartisan Office
PUD Commissioner District 2
 Howie Kubik

Local Ballot Measures
City of Airway Heights
Proposition No. 1
City of Airway Heights
Emergency Medical Care and Services
For the purpose of funding Emergency Medical Care and Services (EMS) as set forth in Resolution 2014-012 shall the City of Airway Heights be authorized to impose an EMS tax levy of \$.25 per One Thousand Dollars of assessed value of property in the City for each of six consecutive years commencing in 2015.
 Yes
 No

Town of Rockford
Proposition No. 1
Town of Rockford
2015 Fire Protection Services
The Rockford Town Council enacted Resolution 14-04 concerning a proposition to finance 2015 fire protection services. This proposition would authorize the Town to levy an excess property tax in 2015 on all taxable property within the Town of Rockford at an approximate rate of \$.51 per \$1,000 of assessed value to raise \$12,400 to be used to provide adequate services in 2015. This levy replaces an expiring levy, which the Town has collected in past years. Should this proposition be approved?
 Yes
 No

Town of Spangle
Proposition No. 1
Town of Spangle
Fire Protection Service Excess Levy
The Spangle Town Council enacted ordinance No. 411 concerning a proposition to finance the 2015 fire protection services. This proposition would authorize the Town to levy an excess property tax in 2015 on all taxable property within the Town of Spangle in an approximate rate of \$1.50 per \$1000 of assessed value to raise \$23,000 to be used to provide adequate fire protection services in 2015. Should this proposition be approved?
 Yes
 No

Proposition No. 2
Town of Spangle
Police Protection Service Excess Levy
The Spangle Town Council enacted ordinance No. 410 concerning a proposition to finance the 2015 police protection services. This proposition would authorize the Town to levy an excess property tax in 2015 on all taxable property within the Town of Spangle in an approximate rate of \$1.19 per \$1000 of assessed value to raise \$17,000 to be used to provide adequate police protection services in 2015. Should this proposition be approved?
 Yes
 No

City of Spokane
Proposition No.1
City of Spokane
Levy for Improved & Integrated Streets
The Spokane City Council adopted Resolution No. 2014-0085, approving a levy proposition to improve and repair the city's streets and terminate the use of the existing \$0.57 property tax assessment for repayment of the 2004 street bond. This proposition would authorize a property tax levy lid lift commencing in 2015 of \$0.57 per \$1,000 of assessed valuation, resulting in no net increase in the 2015 tax rate. The levy funds would be used to pay for street repairs and improvements and would be the basis for subsequent levies for 20 years, all as provided in the resolution. Should this proposition be:
 Approved
 Rejected

Proposition No. 2
City of Spokane
Riverfront Park General Obligation Bonds - \$64,300,000
The City Council of the City of Spokane passed Resolution No. 2014-0084 approving a plan to finance the renovation, improvement and modernization of the aging infrastructure of Riverfront Park, including the Looft Carousel building, U.S. Pavilion, Ice Rink, Skyride and Park facilities with no net increase in the current annual tax levy for Parks. This proposition authorizes the City to finance the renovation of Riverfront Park buildings, facilities and infrastructure; enhance security and safety facilities; improve parking, lighting, heating and cooling systems; and improve other capital facilities of Riverfront Park and the Parks system. General obligation bonds would be issued in a maximum principal amount of \$64,300,000, maturing within 20 years from date of issue, and repaid from an annual excess levy on real property, all as provided in the Resolution. Should this proposition be:
 Approved
 Rejected

Spokane County Fire District No. 2
Proposition No. 1
Fire District No. 2
Emergency Medical Services Regular Levy
Shall Spokane County Fire Protection District No. 2 be authorized to levy a regular property tax in the sum of \$.50 per \$1,000.00 of assessed valuation beginning in 2014 for six consecutive years, to be collected in 2015 through 2020 inclusive, for the provision of emergency medical services to include Basic Life Support medical services, CPR training, education, support services, training and equipment as provided in District Resolution No. 2014-05?
 Yes
 No

Spokane County Fire District No. 12
Proposition No. 1
Fire Protection District No. 12
Emergency Medical Services Regular Property Tax Levy
Shall Spokane County Fire Protection District No. 12 be authorized to levy a regular property tax in the sum of \$.50 per \$1,000 assessed valuation each year for six consecutive years beginning in 2014 to be collected in 2015 through 2020, inclusive, for the provision of Emergency Medical Services all as provided in Spokane County Fire Protection District No. 12 Resolution No. 14-01 and the Laws of the State of Washington RCW 84.52.069?
 Yes
 No

The Spokane County Elections Office will be open Monday – Friday 8:30 am to 4:00 pm to assist voters. Voters may drop off ballots, get replacement ballots, use an Accessible Voting unit, or receive other assistance as needed. Additional information may be found at:
Spokane County Elections
1033 W Gardner Ave
Spokane WA 99260
509-477-2320
Website: www.spokanecounty.org/elections
Email: elections@spokanecounty.org
Vote Both Sides of Ballot
END OF BALLOT