

Meeting Summary

WRIA 55 RCW 90.94 Watershed Plan Update
Planning Unit Meeting #7 – July 16, 2020

The July 16, 2020 WRIA 55 Planning Unit meeting, held remotely using Zoom, was the seventh meeting convened under this process. The meeting agenda is attached to this summary. The primary topics include:

- Overview of the Plan Addendum and Net Ecological Benefit (NEB) Evaluation
- Plan implementation including funding, management, monitoring, and policy decisions
- Overview of the Plan Addendum approval process

Meeting Attendees

Dan Haller, Aspect Consulting	Amanda Parrish, The Lands Council
Carl Einberger, Aspect Consulting	Julie Loveall, Stevens County Farm Bureau
Mike Hermanson, Spokane County	Doug Greenlund, City of Spokane
Amy Sumner, Spokane County	Lindell Haggin, Friends of the Little Spokane River Valley/Audubon
Curtis Johnson, Washington Dept. of Ecology	Brandy Reynecke, Washington Dept. of Ecology
Casey Flanagan, Spokane Tribe	Rob Lindsay, Spokane County
Tim Murrell, Whitworth Water District	Erik Johansen, Stevens County
Josh Kerns, Spokane County Commissioner	Isaiah Paine, Spokane Home Builders
Greg Sweeney, Eloika Lake Association	Renee Kinnick, WDFW
Jim Pacheco, Washington Dept. of Ecology	Wes McCart, Stevens County Commissioner
Karen Skoog, Pend Oreille County Commissioner	John Covert, Washington Dept. of Ecology
Roger Krieger, City of Deer Park	

Meeting Summary

Meeting began, 1:05 PM

Dan Haller (Aspect) led the discussion in his role as lead facilitator with facilitation and technical presentation support from Carl Einberger (Aspect).

Key topics addressed in the discussion are summarized below and additional information can be found in the attached presentation.

The meeting began with introductions, a quick introduction to Zoom protocols, and a review of the meeting agenda was presented. No additions to the agenda was requested.

The 5-step implementation process for the watershed plan update that was previously presented to the Planning Unit was reviewed:

Step 1: Define 20-year exempt well consumptive use impacts

Step 2: Define water-for-water projects at WRIA 55 watershed scale

Step 3: Define mitigation gaps in time and space at subbasin scale

Step 4: Define list of Net Ecological Benefit (NEB) projects

Step 5: Determine NEB for WRIA 55, consensus recommendation on watershed plan update & Initiating Governments' approval

Dan Haller (Aspect) reviewed the Department of Ecology Net Ecological Benefit (NEB) Final Guidance, recently released from Dept. of Ecology. Carl Einberger (Aspect) then gave an overview of the revision history of the Little Spokane future exempt well demand. Changes included 1) adding historic growth rates for Spokane County; 2) removing demand projected to occur in the area governed by WAC 173-557; and 3) adding a 10% contingency to address climate change.

Carl Einberger (Aspect) gave a presentation on the projects included in the NEB evaluation to address water supply. This included a description of: the Little Spokane Water Bank; water rights acquisitions being pursued by Spokane County; a source exchange proposed by Whitworth Water District; a surface water storage project at Eloika Lake; managed aquifer recharge projects; and various habitat and basin wide projects.

Dan Haller (Aspect) provided attendees with an opportunity to discuss or ask questions. Only one question was presented and discussed:

Roger Krieger (City of Deer Park) asked how a proposed wetland banking project near Deer Park fit in with those described in the presentation. He described the Spring Creek project as being mitigation for a private project. Mike Hermanson (Spokane County) stated that if the Spring Creek project is serving as mitigation for wetland impacts it cannot be double counted by using it towards stream flow. Roger Krieger (City of Deer Park) felt that there must be some way to support the project in the Plan Addendum.

Carl Einberger (Aspect) gave a presentation on the NEB Evaluation, demonstrating how it met the requirements of Ecology's Final Guidance.

Dan Haller (Aspect) provided attendees with an opportunity to discuss or ask questions. Only two questions were presented and discussed:

Jim Pacheco (Wash. Dept of Ecology) stated that projects higher in the watershed are beneficial to lower areas, and noted that the Beaver Creek surplus being higher in the watershed should be separated out from Dragoon Creek. Carl (Aspect) indicated that Dragoon's water balance could have been zero acre-feet per year (afy), and Beaver Creek as 23 afy, but the opposite is used instead. Wes McCart (Stevens County) stated that to address uncertainty, it is probably wise to show surplus or offset in both Dragoon and Beaver Creek subbasins.

Wes McCart (Stevens County) followed up with asking how the 10% contingency in demand was accounted for in the NEB Evaluation. He stressed that the evaluation is over estimating and covering uncertainty, but is not sure that is clear. Dan Haller (Aspect) commented that he believes the point is made but will ensure that this is highlighted in the document.

Dan Haller and Carl Einberger (Aspect) continued with a presentation regarding Plan Addendum implementation. This included a note that the awards for funding authorized under ESSB 6091 should be announced at the end of September. Brandy Reynecke (Dept. of Ecology) confirmed this in the Zoom chat box. She typed that grant application scores are being reviewed by leadership team and they have until September to complete their review and select projects. The award announcement is scheduled for end of September.

The presentation regarding Plan Addendum implementation continued with a note from Dan Haller (Aspect) that the understanding is that no recommended modifications to the policy considerations under RCW 90.94.020(4)(d) will be made.

The presentation then included an outline of the adoption process. Carl Einberger (Aspect) noted that the process to adopt the Plan Addendum is to assume that if an agency/organization does not comment on the draft during the comment period (ends July 30th) then it is assumed that the agency/organization endorses the Plan Addendum. If an agency/organization sends comments, it is asked that they indicate their level of endorsement or non-endorsement of the Plan Addendum. Dan Haller (Aspect) indicated that the intent is to submit the Plan Addendum early to Ecology, possibly late next month (August).

Dan Haller provided attendees with an opportunity to discuss or ask questions. Only two questions were presented and discussed:

Brandy Reynecke (Ecology) spoke to reiterate her earlier comment in the Zoom chat box for attendees who might have missed it. She also noted that 30 points is assigned to projects that are in a watershed plan. Dan Haller (Aspect) followed up to ask Brandy if funding is available immediately following the announcement. Brandy Reynecke (Ecology) clarified that funding is not available until the negotiation process is complete and a grant agreement is signed. Carl Einberger (Aspect) summarized the projects submitted for funding: two from Spokane County, one from WDFW, one from Whitworth Water District, and one from the Spokane Conservation District.

Doug Greenlund (City of Spokane) updated the group on the City's progress for approving the Plan Addendum. He is in the process of updating the City Council and a vote for approval is expected between end of August to mid-September.

John Covert (Ecology) brought up the emailed concern from Ken Merrill (Kalispel Tribe) about the Eloika Lake project having a lot of weight, but there is potential for degrading water quality from releasing warm, stored water from the lake. Ken (Kalispel Tribe) indicated there needs to be more acknowledgement of this in the Plan Addendum. Carl Einberger (Aspect) stated additional information regarding the need for further study of water quality and other impacts will be added to the Plan Addendum. Greg Sweeny (Eloika Lake Assoc.) indicated that there was a SEPA review in 2013 which includes details of the permitting process needed. He recommended adding this as an attachment to the Plan Addendum.

Julie Loveall (Stevens County Farm Bureau) stated she likes how this process has moved forward and is willing to move with a positive vote.

Jim Pacheco (Wash. Dept of Ecology) mentioned Ecology has minor comments on the Plan Addendum and asked whether Brandy (Reynecke, Ecology) shared them. Dan Haller (Aspect) replied no. Jim said that there is a lot of discussion of what the Plan Addendum is doing but more details are needed to

support the decision that it provides a net ecological benefit. He recommends specifying where the projects are located and that the deficits are at the bottom of the watershed.

Brandy Reynecke (Ecology) asked for clarification on how consensus is to be documented if there is not going to be another meeting. Dan Haller (Aspect) reiterated that consensus is being documented by comments on the draft Plan Addendum. It will be assumed that agencies/organizations without comment agree with the Plan Addendum. For those submitting comments, it is asked that they include their level of agreement: they are endorsing the Plan Addendum, they are endorsing the Plan Addendum with reservations, or they are not endorsing the Plan Addendum. Brandy Reynecke (Ecology) expressed concern that there are people not in attendance at this meeting that may not know this is the process. Dan Haller (Aspect) agreed to follow up with an email to outline the process and to specifically reach out to let folks know.

At this point, Dan Haller (Aspect) called for a break. Break 1:50PM – 2:00PM PST

Brandy Reynecke (Ecology) asked is there will be a list of all comments and how they were addressed in the Plan Addendum. Carl Einberger (Aspect) indicated that this will be included. Greg Sweeny (Eloika Lake Assoc.) asked whether the comments will be made available to see. Dan Haller (Aspect) stated that the comments can be made immediately available, and the response to them will follow.

Brandy Reynecke (Ecology) wanted to get a feel from the attendees on where they are with reviewing the Plan Addendum. Dan Haller (Aspect) asked for attendees to use the Raise Hand feature if they read the whole Plan Addendum; no hands were raised. Next he asked attendees to raise their hands if they've only reviewed new sections; approximately 10 hands were raised.

John Covert (Ecology) asked for clarification on how the initiating governments are voting; whether they're voting individually at a regular meeting. Mike Hermanson (Spokane County) stated that the plan is for each to approve in an open meeting with a resolution. Karen Skoog (Pend Oreille County) stated they had no comments on the Plan Addendum.

Dan Haller (Aspect) reminded everyone that comments are due at the end of the month (July 31). Dan Haller and Carl Einberger (Aspect) Thanked everyone for their collaboration during this process.

Meeting adjourned at approximately 3:20 PM PST

Zoom Protocols – Please read:

Participants will be muted by the moderator except during question/discussion periods

Questions/comments - submit via the chat function (move cursor around mid bottom of screen and you will see a menu bar with a chat button)

To be unmuted to speak during question/comment periods – Use the raise hand function (as above, move cursor around mid bottom of screen. Click on participant and you will see “raise hand” button)

Planning Unit Meeting #7
July 16, 2020

WRIA 55

(Little Spokane)

RCW 90.94

Watershed Planning

Presented by



Introductions

- **Lead Facilitator:** Dan Haller, PE, Aspect Consulting
 - dhaller@aspectconsulting.com
- **Technical support and facilitation:** Carl Einberger, LHG, Aspect Consulting
 - ceinberger@aspectconsulting.com
- **Lead agency:** Spokane County Environmental Services
 - Mike Hermanson, Water Resources Manager
 - mhermanson@spokanecounty.org
- **Initiating Governments:** Spokane County, Stevens County, Pend Oreille County, City of Spokane, and Whitworth Water District

Meeting #5 Agenda

- **Introductions, Zoom protocols, and Agenda Review (1:00 to 1:15)**
- **RCW 90.94 requirements for Plan Addendum (1:15 – 1:40)**
- **NEB Evaluation and Conclusions (1:40 – 2:20)**
 - Demand
 - Supply
 - Summary of Water Offset Balance from Offset Projects
 - Conclusions
- **Break (2:20-2:30)**

Meeting #5 Agenda

- **Plan Implementation (2:30 – 2:50)**
 - Funding
 - Monitoring and Management
 - Policy decisions
- **Plan Approval Process (2:50 – 3:00)**
 - Initiating Governments Memorandum of Agreement
 - Ecology adoption process
- **Questions and Comments from Planning Unit & Roundtable Discussion (3:00 – 4:00)**

5-Step Implementation Process

- Step 1: Define 20-year exempt well consumptive use impacts: 2,354 afy / 3.3 cfs
- Step 2: Define water-for-water projects at WRIA 55 watershed scale
- Step 3: Define mitigation gaps in time and space at subbasin scale
- Step 4: Define list of Net Ecological Benefit (NEB) projects



- **Step 5**: Evaluate NEB for WRIA 55, local approval, submit for Ecology determination/plan adoption

NEB Guidance

WATER RESOURCES PROGRAM GUIDANCE

Final Guidance for Determining Net Ecological Benefit

GUID-2094 Water Resources Program Guidance

July 31, 2019
Publication 19-11-079

NEB Guidance

- **Minimum Planning Requirements:**
 - **Utilization of clear and systematic logic**
 - **Delineation of subbasins**
 - **Estimation of new consumptive water uses**
 - **Evaluation of impacts from new consumptive water use**
 - **Description and evaluation of projects and actions for their offset potential**

NEB Evaluation - Demand

■ Revision History:

- **1st version (1/18/19) - OFM 2010 to 2040 medium growth projections for Spokane County; historical growth rates for Stevens and Pend Oreille Counties**
- **2nd version (9/9/19) – Historical growth rates for Spokane County added**
- **3rd version (3/2/20) - Removed demand projected to occur in the area governed by WAC 173-557; wells in this area are regulated separately**
- **4th version (3/5/20 Planning Unit mtg) – Consensus among Planning Unit reached on adding 10% contingency to address potential effects of climate change**

NEB Evaluation – Demand

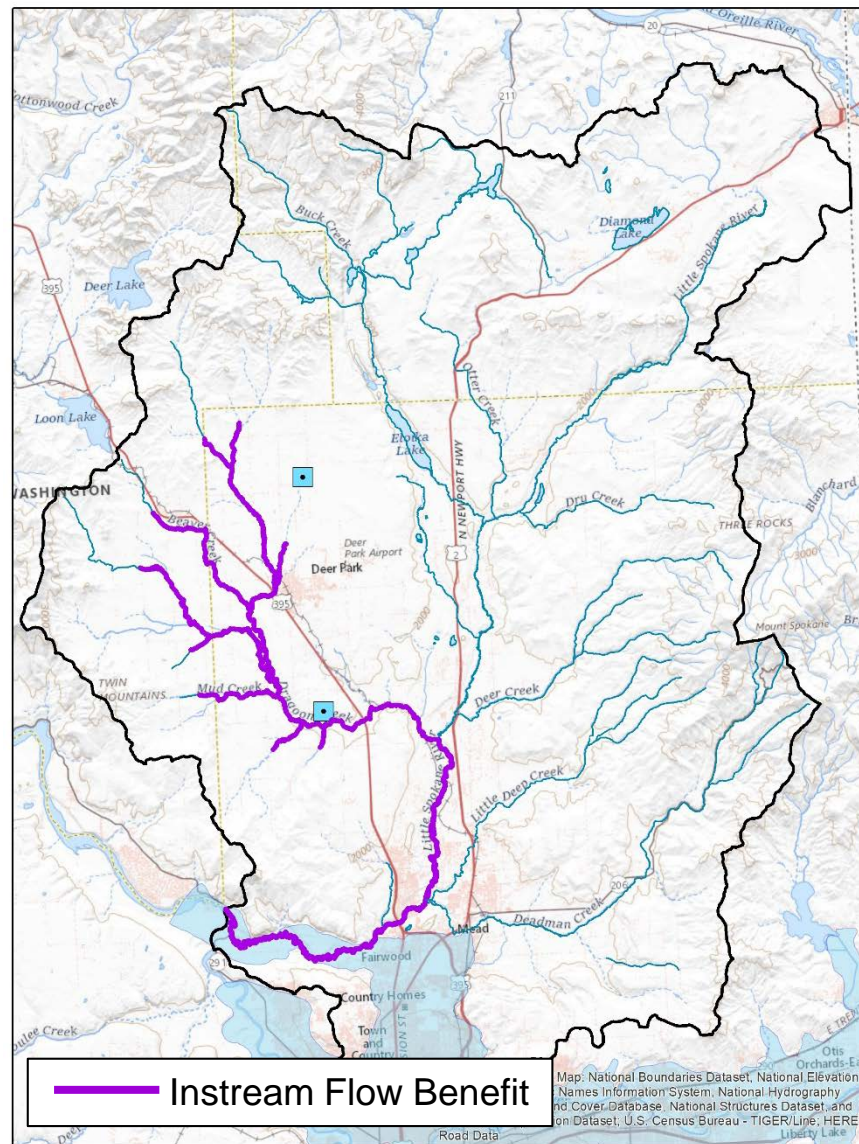
Table 4. WRIA 55 Exempt Well Demand

WRIA 55 Subbasins	WRIA 55 Exempt Well Demand	
	Projected Consumptive Use (afy)	Projected Consumptive Use (cfs)
Dartford Creek	137.40	0.19
Mainstem	182.51	0.25
Dragoon Creek	501.65	0.69
Deadman-Peone Creek	531.64	0.73
Beaver Creek	239.22	0.33
Otter Creek	327.84	0.45
West Branch	95.18	0.13
Little Spokane/Deer Creek	264.03	0.36
Little Deep Creek	74.22	0.10
TOTAL	2353.69	3.25

NEB Evaluation – Supply – Little Spokane Water Bank

■ Little Spokane Water Bank

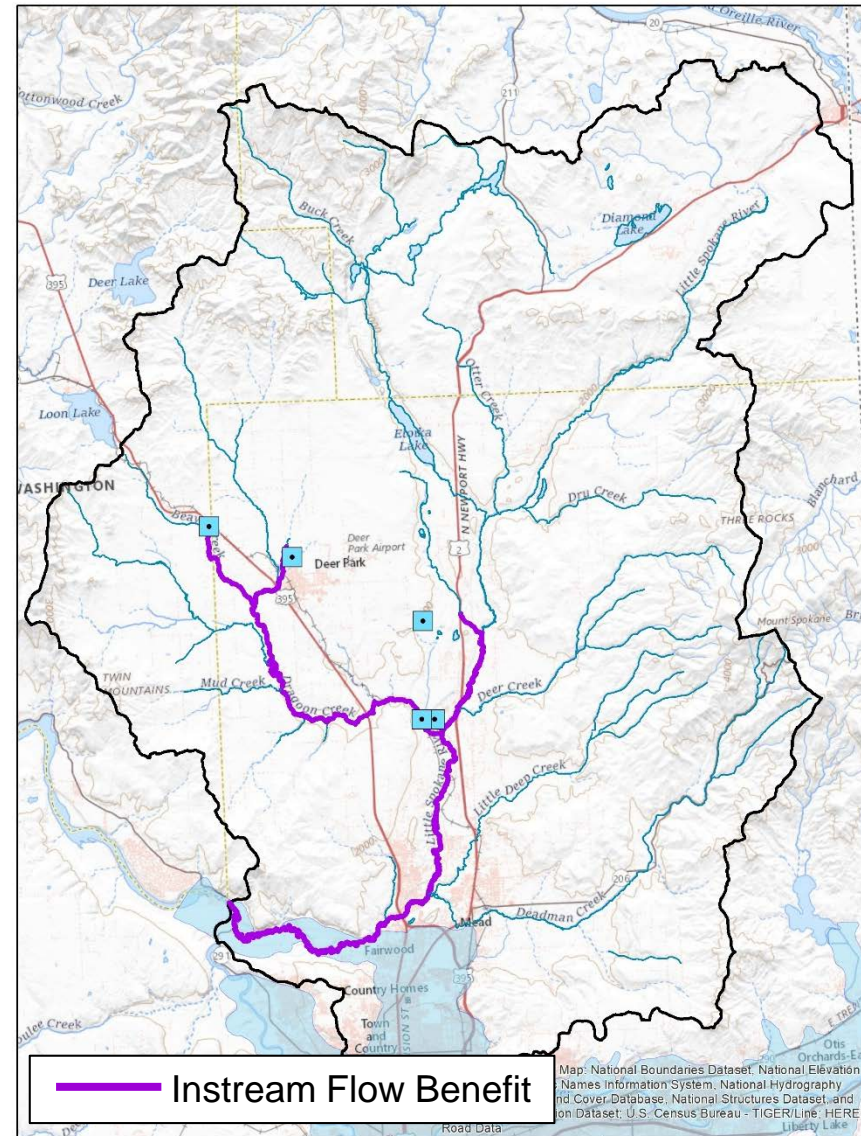
- 283.4 afy
- Provides mitigation certificates for uses that would be covered under 90.94 offset and are included in demand forecast
- Permit exempt uses that are part of a rural subdivision.
- Currently working on 80 lot subdivision.
- Subdivisions are at current density and do not induce additional demand.
- Could apply for funding to purchase water from water bank to put into trust for 90.94 offset.



NEB Evaluation – Supply – Water Right Acquisition

■ Water Right Acquisition

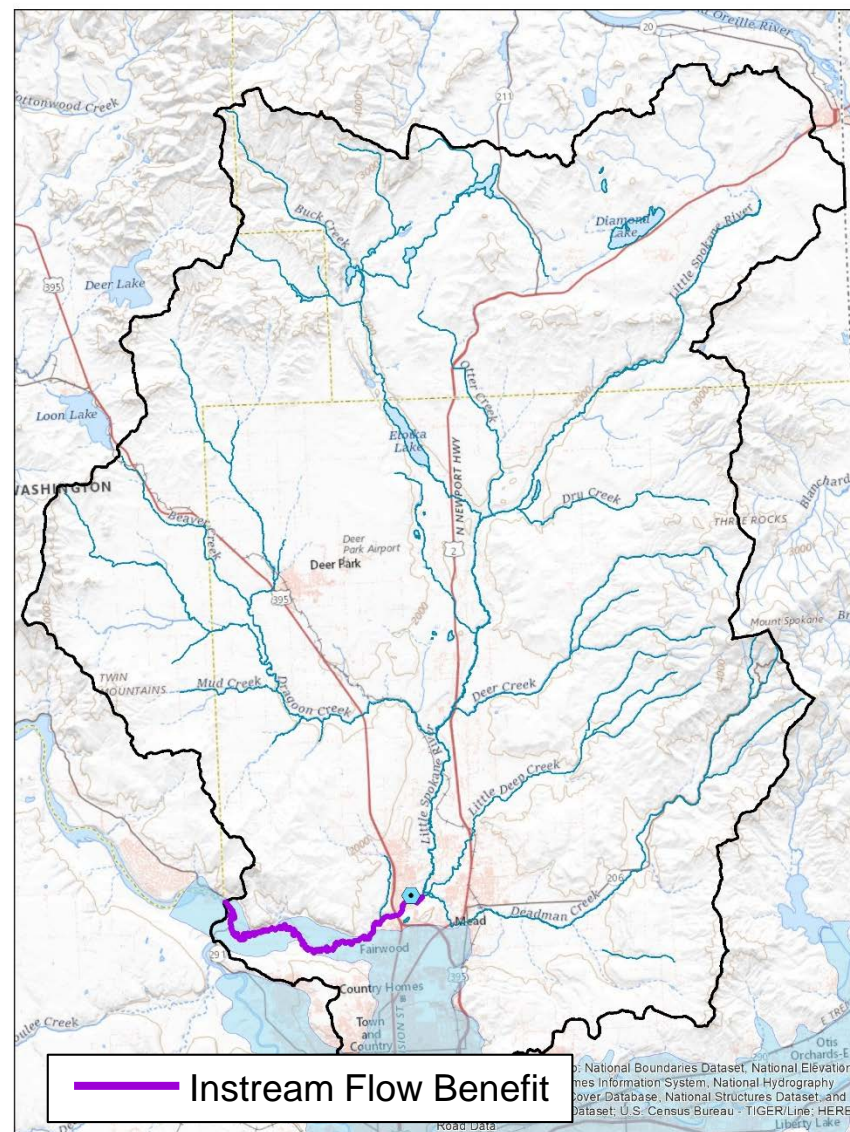
- 100 afy of surface water rights
- 278 afy of groundwater rights
- Grant awarded for acquisition
- Currently in negotiations and transfer process



NEB Evaluation – Supply – Source Exchange

■ Whitworth Water District Source Exchange

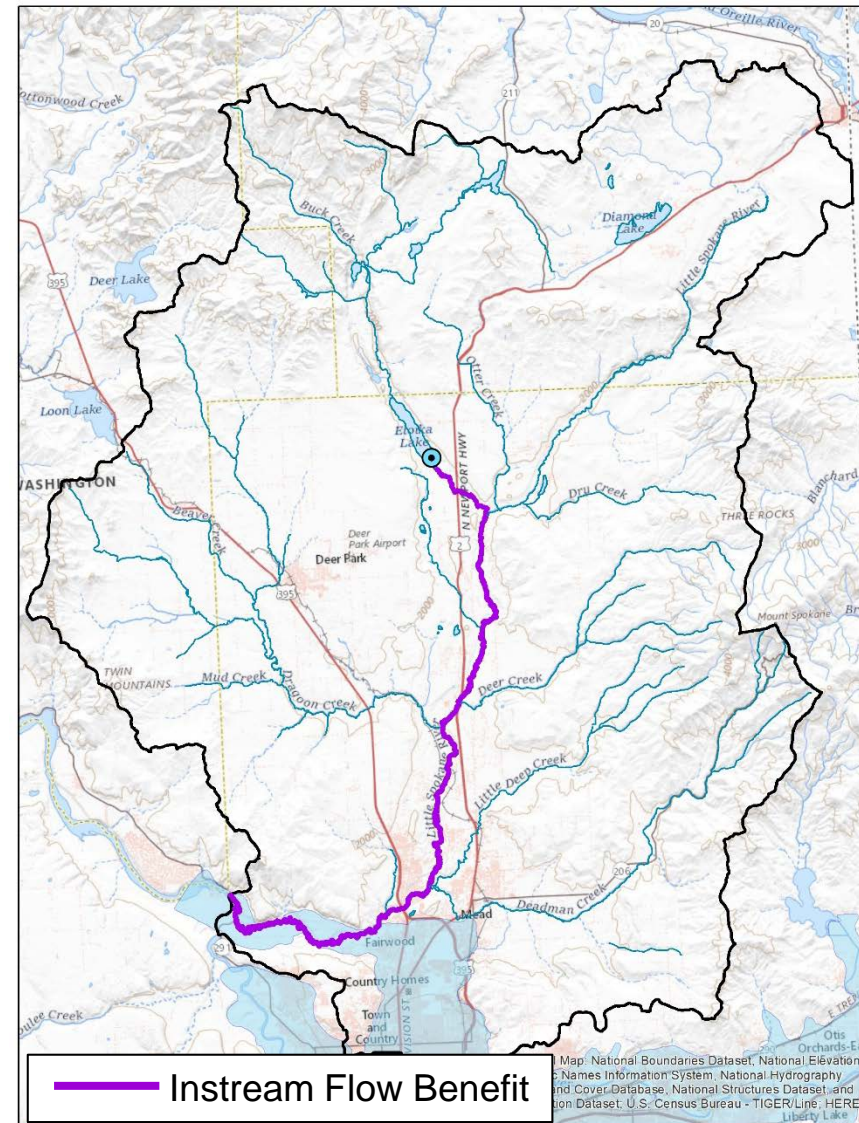
- New mitigated 400 afy water right from SVRP in exchange for donating an equivalent amount from LSR aquifers to the State Trust Water Program
- Estimated 20-30 afy impact to Spokane River to be mitigated by purchase of SVRP water right
- Total Cost - \$5.77 million
- Grant request - \$1.14 million



NEB Evaluation – Supply – Surface Water Storage

Eloika Lake Surface Water Storage

- Storage through design and construction of an outlet control structure capable of maintaining higher lake levels for a longer period each summer
- Expected 1,400 afy of benefit to instream flows in West Branch subbasin and the Little Spokane River.
- Project cost estimates:
 - Permitting and Design - \$600,000
 - Outlet Control Structure \$100,000-\$300,000
 - Wetland Restoration \$1.8-\$3.7 million
 - O&M dependent on final design



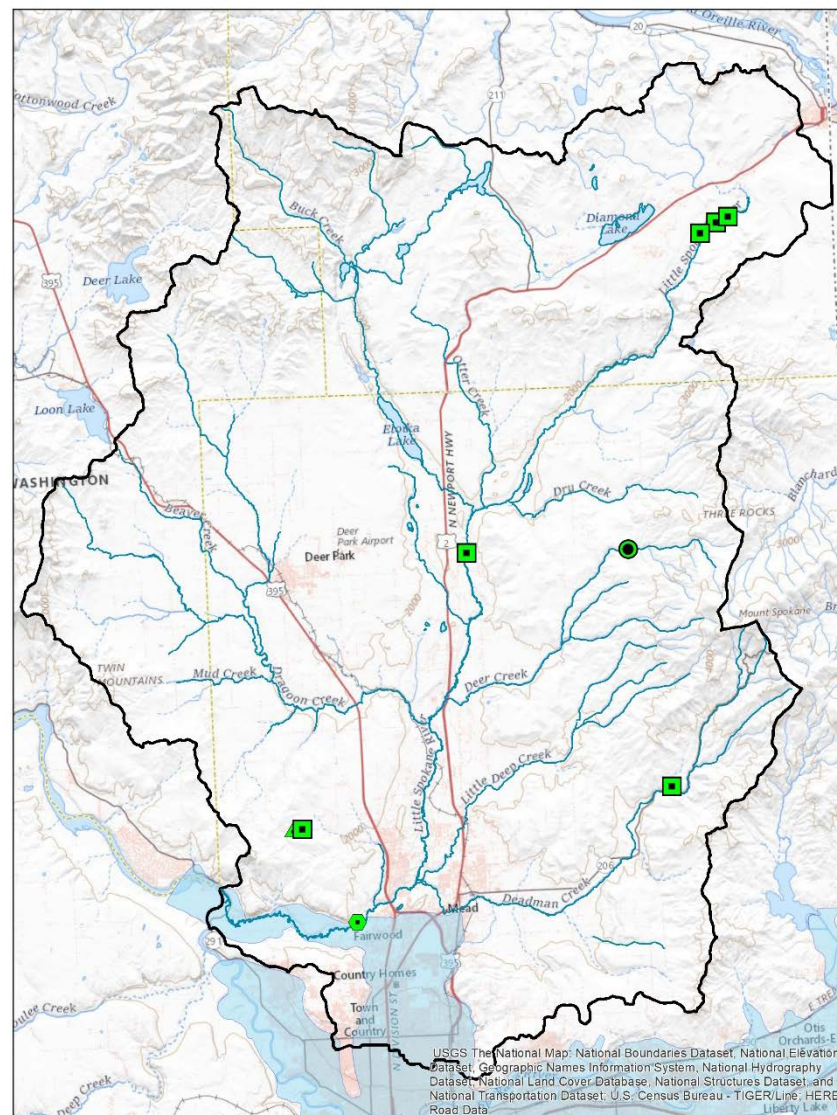
NEB Evaluation – Habitat Projects

■ Habitat Projects

- Habitat Restoration & Enhancement (6 projects)
 - \$184,000
- Flood Plain Restoration
 - \$60,000
- Habitat Protection
 - \$1.6 million
- Fish Barrier Removal
 - \$124,750

■ Basinwide Projects

- Spokane Tribe – Little Spokane Watershed Habitat Evaluation and Restoration
 - \$950,000
- WDFW – WRIA 55 Fish Barrier Assessment
 - \$333,000



NEB Evaluation - Opportunistic Projects

- **Seeking new opportunities for water right purchases.**
 - Additional water right owners may express interest in selling water rights in the future.
- **Future identification of culvert/fish barrier projects.**
 - A comprehensive study of fish barriers in WRIA 55 has not been conducted. Future work, as proposed by WDFW, would support identification of key fish barriers to focus on for removal or modification.
- **Future identification of culvert/fish barrier projects.**
 - Conservation Districts, the Lands Council, and the Spokane Tribe have noted that habitat restoration projects are often opportunistic in nature based on the timing of landowner interest.

NEB Evaluation

WATER RESOURCES PROGRAM GUIDANCE

Final Guidance for Determining Net Ecological Benefit

GUID-2094 Water Resources Program Guidance

July 31, 2019
Publication 19-11-079

NEB Evaluation

- **Ecology GUID-2094 recommends the following steps:**
 - **1) Compare total projected impact from new consumptive water use in all subbasins with total amount of water offset benefits generated by all projects in the WRIA**

 - **2) Compare projected impacts and any offsets within each subbasins. All impacts at a minimum must be offset at the WRIA level, the evaluation should determine if the plan has succeeded in offsetting the impacts at the WRIA level. There may be instances where the amount of offsets provided in certain subbasins will be more or less than the projected new consumptive water use. This is acceptable because the offsets are provided within the WRIA and in sufficient quantities.**

NEB Evaluation

- **Ecology GUID-2094 recommends the following steps:**
 - **3) Identify projects that provide the additional benefits to instream resources beyond those necessary to offset the impacts from new consumptive water use within the WRIA boundary.**
 - **4) Adaptive management conditions can also be included to address uncertainty.**
 - **5) The evaluation should include a clear statement of the planning group's finding that the combined components of the plan do or do not achieve a NEB.**

NEB Evaluation – Supply vs. Demand

- All water offset projects combined provide a mitigation benefit of 4,262 afy
- Final basinwide 20-year demand estimate is 2,354 afy
- The combined water balance at the WRIA scale indicates a basin wide surplus of 1,908 afy.
- 6 of the WRIA 55 subbasins have sufficient offset supplies to meet estimated 20-year permit-exempt well demand
- 2 of the WRIA 55 subbasins have deficits in water offset supply (Deadman Creek/Peone Creek and Dartford Creek subbasins) – these are addressed with habitat.....



WRIA 55 (Little Spokane)

IDAHO

Total Offset = 4262 afy
Estimated 20-year Demand = 2354 afy
Combined Water Balance at WRIA Scale = 1908 afy

Basin Wide Projects
- Fish Barrier Assessment
- Seek Additional Water Right Purchases

Legend

Non-Water Offset Projects

TechMemoType

- Floodplain Restoration
- Habitat Restoration/Enhancement
- Habitat Protection
- Fish Barrier Removal

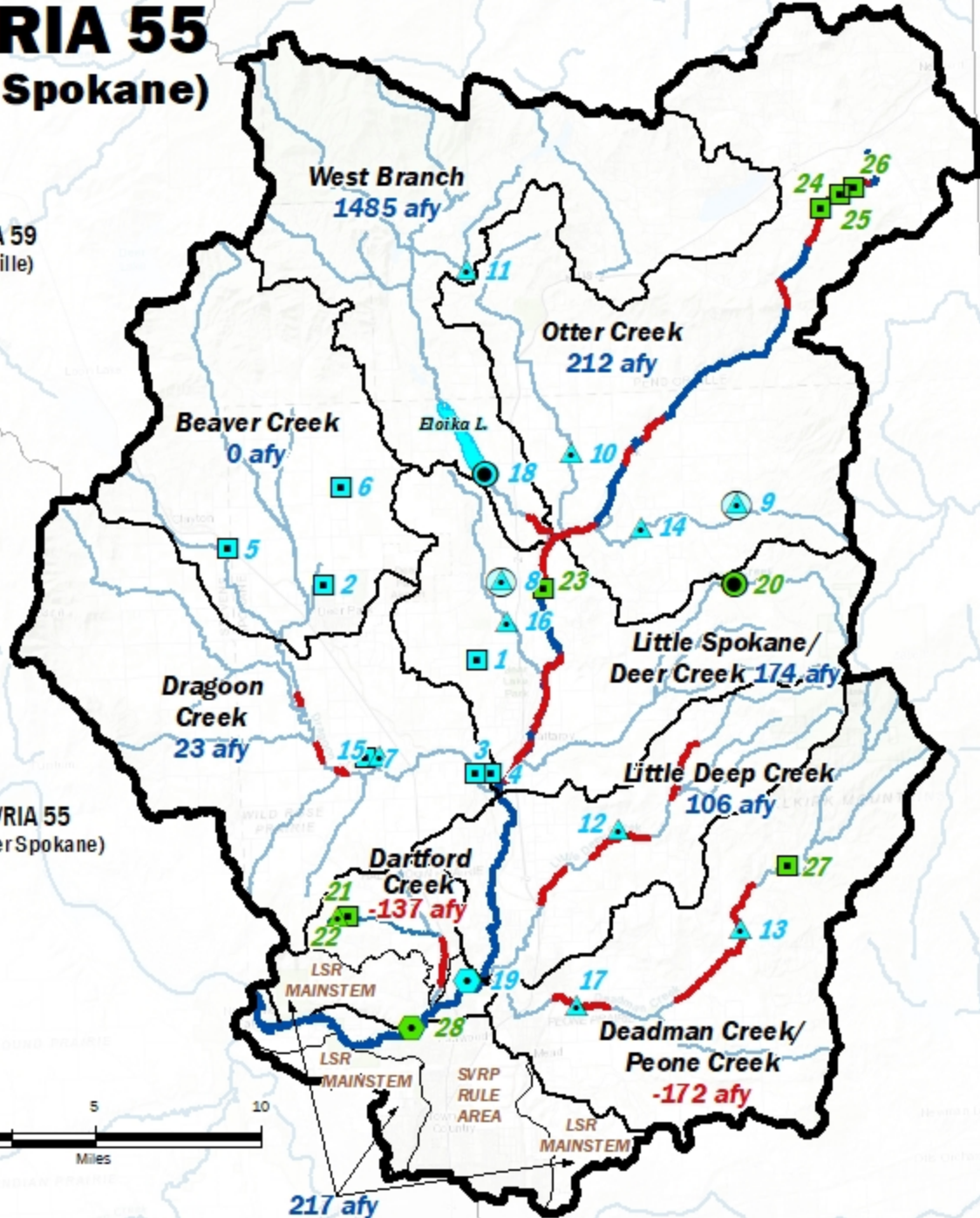
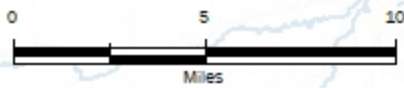
Water Offset Projects

- MAR Project
- MAR Project with Preliminary Design
- Source Exchange
- Storage Project
- Water Right Acquisition

Identified Habitat Restoration Needs
(Priority Areas for Opportunistic Projects)

WRIA 59
(Colville)

WRIA 55
(Lower Spokane)



217 afy

Table 5. WRIA 55 Offset Project Summary Table

Project No. 180249, WRIA 55, Washington

Projects by Subbasin	Project #	Project Proponent	Project Type	Subbasin Demand	Water Offset
Dartford Creek				137.4	
Dartford Creek Floodplain Restoration Project	21	Spokane Conservation District	Habitat		
Dartford Creek Habitat Restoration Project	22	Spokane Conservation District	Habitat		
Subbasin Surplus/Deficit				-137.4	
LSR Mainstem				182.51	
Whitworth Water District Source Exchange	19	Whitworth Water District	Water Offset		400
Little Spokane Riparian Habitat Restoration Project	23	Spokane Conservation District	Habitat		
Westover Habitat Restoration Project	24	Pend Oreille Conservation District	Habitat		
Cygiel Habitat Restoration Project	25	Pend Oreille Conservation District	Habitat		
Stockton Streamflow Restoration Project	26	Pend Oreille Conservation District	Habitat		
Waikiki Springs Habitat Preservation Project	28	Inland Northwest Land Conservancy	Habitat		
Subbasin Surplus/Deficit				217.49	
Beaver Creek				239.22	
G3-*02228CWRIS Aquisition	2	Spokane County	Water Offset		100
CG3-24214(A) (Little Spokane Water Bank	6	Spokane County	Water Offset		255.4
Dragoon Creek				501.65	
Dragoon DNR MAR	15	Spokane County	Water Offset		180
G3-*01844CWRIS Aquisition	3	Spokane County	Water Offset		100
S3-*12724CWRIS Acquisition	4	Spokane County	Water Offset		50
S3-*06812CWRIS Aquisition	5	Spokane County	Water Offset		50
G3-20511C (Little Spokane Water Bank)	8	Spokane County	Water Offset		28
Subbasin Surplus/Deficit¹				22.53	
Deadman-Peone Creek				531.64	
Deadman Creek Site 1 MAR	13	Spokane County	Water Offset		180
Deadman Creek Site 2 MAR	17	Spokane County	Water Offset		180
Beaver Dam Analogue Project on Deadman Creek	27	The Lands Council	Habitat		
Subbasin Surplus/Deficit				-171.64	
Otter Creek				327.84	
Dry Creek Site 1 MAR	9	Spokane County	Water Offset		180
Dry Creek Site 2 MAR	14	Spokane County	Water Offset		180
Otter Creek Site 3 MAR	10	Spokane County	Water Offset		180
Subbasin Surplus/Deficit				212.16	
West Branch				95.18	
Eloika Lake Surface Water Storage	18	Spokane County	Water Offset		1400
County Park/Last Chance Rd MAR	11	Spokane County	Water Offset		180
Subbasin Surplus/Deficit				1484.82	
Little Spokane/Deer Creek				264.03	
Milan Road/Bear Creek MAR	8	Spokane County	Water Offset		180
Bear Creek MAR	16	Spokane County	Water Offset		180
G3-23099C (G3-CV2-SP52) Acquisition	1	Spokane County	Water Offset		78
Deer Creek Fish Barrier Removal Project	20	Spokane Conservation District	Habitat		
Subbasin Surplus/Deficit				173.97	
Little Deep Creek				74.22	
Little Deep Creek Site 1 MAR	12	Spokane County	Water Offset		180
Subbasin Surplus/Deficit				105.78	
Basin Wide Projects					
WRIA 55 Fish Barrier Assessment and Prioritization Project	N/A	Washington Department of Fish and Wildlife	Habitat		
Little Spokane Watershed Habitat Evaluation and Restoration	N/A	Spokane Tribe of Indians	Habitat		
Basinwide Surplus/Deficit				1907.71	

Notes: 1-Beaver Creek flows into Dragoon Creek, and excess mitigation in Beaver Creek benefits Dragoon Creek. Therefore, for the purposes of this table the surplus/deficit is calculated for these subbasins in combination. All values in acre-feet per year.

NEB Evaluation - Conclusions

- **Combined water balance at the WRIA scale from proposed offset projects indicates a basinwide surplus of 1,908 afy relative to the estimated 20-year permit-exempt well demand.**
 - **This exceeds water offset requirements for WRIA 55 required by RCW 90.94.**
 - **Surplus supports flexibility and provides reasonable assurance that permit exempt demand will be offset in WRIA 55.**
 - **A subset of projects can still provide sufficient water offset to meet projected demand, if some offset projects are not developed due to funding constraints or other issues**
- **Most subbasins have sufficient water offset projects identified to meet or exceed projected 20-year subbasin permit-exempt well demand.**
 - **The Deadman Creek/Peone Creek and Dartford Creek subbasins are the exceptions, where deficits of 172 afy and 137 afy are estimated based on the current offset project list.**

NEB Evaluation - Conclusions

- **Many of the subbasins have non-water offset projects proposed, including the two subbasins with offset water deficits. The non-water offset projects support the attainment of NEB for these subbasins.**
- **The projects are realistic, consist of project types regularly funded by state and federal funding programs, and have a solid scientific foundation.**
- **Key agencies and stakeholders with experience in implementing projects have proposed offset projects for inclusion in this Plan Addendum for WRIA 55, including Spokane County, Spokane Conservation District, Pend Oreille Conservation District, The Lands Council, The Inland Northwest Land Conservancy, Spokane Tribe of Indians, and Washington Department of Fish and Wildlife.**
- **Water offset and non-water offset projects are distributed throughout WRIA 55, including in the upper portions of the basin, providing instream flow benefits to significant river miles in the tributaries and mainstem.**

Break



Plan Implementation – Capital Funding

- **ESSB 6091 authorized \$300 million in capital funds to be dispersed between 2018 to 2033 for the following uses:**
 - Implement watershed restoration and enhancement projects developed under RCW 90.94.020 and 90.94.030; and to
 - Collect data and complete studies necessary to develop, implement, and evaluate watershed restoration and enhancement projects.

- **In addition to the Streamflow Restoration Grant program there are other applicable state and federal grant programs, including:**
 - Bureau of Reclamations WaterSmart Programs (e.g. Drought Resiliency, Water Efficiency, and Water Market programs)
 - Ecology Office of Columbia River grant program
 - Ecology Water Quality Program grants
 - Various habitat restoration grant programs RCW

O&M and Implementation Funding

- **ESSB 6091 did not address ongoing operation and maintenance and implementation of this Plan Addendum.**
- **Ecology has indicated that under the current statutory framework for streamflow restoration, state funding will not be available to support ongoing offset project O&M and plan implementation.**
- **Draft Plan Addendum includes this statement: *“The WRIA 55 Planning Unit considers it a priority to petition the Washington State Legislature to provide ongoing funding for plan implementation and for operation and maintenance of offset projects, in addition to capital funding of projects.”***
- **In the absence of state funding for this purpose, each project proponent would need to develop a funding source for operation and maintenance of their offset projects.**

Plan Implementation – Monitoring and Management

- **Monitoring and management of offset projects identified in this Addendum:**
 - **Will be completed through ongoing cooperative efforts from various groups, which may include the Initiating Governments and Planning Unit members that have proposed projects within this Plan Addendum.**
 - **Some or all of these groups will need to identify funding sources to continue this work.**

- **Each WRIA 55 County will continue to account for permit-exempt domestic groundwater withdrawals.**
 - **Monitoring actual versus projected new domestic exempt well locations and the rates being established, will enable groups to adaptively manage the implementation of this Addendum to ensure ongoing funding requests for priority projects align with changing impacts/needs.**

Discussion of RCW 90.94 Policy Considerations

- **RCW 90.94.020(4)(d) – The watershed plan may include:**
 - **(i) Recommendations for modification to fees established under this subsection**
 - **(ii) Standards for water use quantities that are less than authorized under RCW 90.44.050 or more or less than authorized under subsection (5) of this section for withdrawals exempt from permitting**
 - **(iii) Specific conservation requirements for new water users to be adopted by local or state permitting authorities**
 - **(iv) Other approaches to manage water resources for a water resource inventory area or portions thereof**

Ecology Adoption Process

- **Section 202(4)(c) of ESSB 6091 states:**
 - ***“Prior to adoption of the updated watershed plan, the department must determine that actions identified in the watershed plan, after accounting for new projected uses of water over the subsequent twenty years, will result in a net ecological benefit to instream resources within the water resource inventory area.”***

Memorandum of Agreement (MOA)

- **WRIA 55 Initiating Governments (Spokane, Stevens, and Pend Oreille Counties, City of Spokane, and Whitworth Water District).**
- **Designates Spokane County as Lead Agency - Responsible for convening Planning Unit and managing grant funding.**
- **The intent is to have a “congenial consensus-building methodology to ensure participant interests and concerns are considered in the development of a fact-based WRIA 55 Watershed Plan Update”.**
- **All decisions and actions not resolved via consensus during the planning process require a motion and majority vote of the Initiating Governments, except:**
 - **Approval of the WRIA 55 Watershed Plan Update requires a super majority vote of the Initiating Governments.**

Schedule Reminder

- July 2 - Distribution of draft WRIA 55 Watershed Plan Addendum
- July 2 – July 15 1st written comment period
- July 16 – This Planning Unit Meeting
- July 16 to July 30 – 2nd written comment period
- July 30 – Final written comments due on the draft Plan Addendum (submit to ceinberger@aspectconsulting.com)
 - If no comments from a Planning Unit member, we will assume consensus
 - If you provide comments, please clarify where you are on the consensus spectrum for the Plan Addendum:
 - Endorse
 - Agree with reservations (“I can live with it”)
 - Do not endorse

Discussion

