

Spokane County Public Works ADA Transition Plan

For Pedestrian Curb Ramps and Pedestrian Push
Buttons In The Public Right Of Way

Spokane County Public Works Department

January 2023

TABLE OF CONTENTS

BACKGROUND.....	1
PURPOSE	2
ADA STANDARDS.....	2
Vulnerable Populations	3
Self-Evaluation	4
Curb Ramps.....	4
Pedestrian Push Buttons.....	6
Bus Stop Accessibility	6
Self Evaluation.....	7
Improvement Schedule.....	8
Funding	8
Public engagement	8
Ensuring Compliance and Program Schedule	9
Curb Ramps.....	9
Pedestrian Push Buttons.....	9
Bus Route Accessibility	10
Grievance Policy and Procedures.....	10
Program Responsibility / ADA Coordinator	10
References and Resources.....	13
Appendix A.....	14
Appendix B	16
Appendix C.....	17
Appendix D.....	20
Appendix E	67
Appendix F	73
Appendix G.....	74
Appendix H.....	75
Appendix I	76
Definitions.....	77

BACKGROUND

The Americans with Disabilities Act (ADA), signed into law in 1990, is a civil rights statute prohibiting discrimination against people who have disabilities. ADA covers a wide range of disabilities, including physical disabilities that limit mobility, stamina, vision, hearing, and speech as well as cognitive disabilities, emotional illness and learning disorders.

The ADA requires public entities with 50 or more employees to perform a self-evaluation to determine barriers to accessibility, as well as create a Transition Plan identifying how compliance will be achieved. The ADA Transition plan is required through Title II of the ADA. Title II of the ADA (28 CFR Part 35) specifically addresses services and accessibility of state and local governments facilities and prohibits excluding participation in or denying benefits of programs, services or activities to people with disabilities. Pedestrian facilities in the Spokane County right-of-way are considered a public service provided by the County and will be the primary focus of this Transition Plan. Under the ADA, designing and constructing public facilities that are not accessible by people with disabilities constitutes discrimination. While the ADA requires agencies to provide accessibility to all its services, there is not a requirement to remove all architectural barriers to all its facilities. Exceptions can be made when there are alternative routes, if historical significance would be destroyed, or if the upgrade would result in undue financial and administrative burdens.

The goal of the self-evaluation is to ensure that the policies and procedures Spokane County is using is providing accessibility and not adversely affecting full participation of individuals with disabilities. This document and the public participation in its development are intended to satisfy the Transition Plan requirement of Existing Facilities as it relates to curb ramps and pedestrian push buttons along County right-of-way.

The Transition Plan aims to achieve the following:

- Identify physical obstacles that limit the accessibility of facilities to individuals with disabilities,
- Describe the methods that will be used to make the facilities accessible,
- Provide a schedule for making the access modifications, and
- Identify the public officials responsible for implementation of the Transition Plan.

The focus of this report is to assess and improve, where needed, pedestrian facilities in Spokane County public rights-of-way. This document will focus primarily on curb ramps and pedestrian activated push buttons at signalized intersections. Other County owned facilities, such as the courthouse, detention facilities, Public Safety building, Public Works building, and other similar facilities will be addressed in a separate transition plan.

PURPOSE

The goal of the Transition Plan is to improve accessibility and ensure equal participation for everyone using County rights-of-ways within unincorporated Spokane County. To achieve this goal Spokane County is dedicated to identifying deficiencies, impediments, and barriers that do not meet ADA requirements. The Transition plan will be updated annually, be used to identify strategies used to improve accessibility, develop a realistic schedule that is achievable within the available budget, and identify funding sources.

When Spokane County determines what improvements will be prioritized, the County may consider multiple factors including but not limited to; volume of pedestrian activity, population density, presence of a disabled population, pedestrian Level of Service (LOS), complaints made by the public, and cost. It is expected that accessibility improvements will primarily be performed in concurrence with other development projects occurring in Spokane County, funded by grant opportunity, and through planned improvements as permissible by the County Engineer.

Taking into consideration these factors as well as funding challenges, Spokane County anticipates using the following criteria to facilitate the implementation process of improving accessibility as permitted by funding factors:

1. Locations that have been identified from the public complaint/grievance process.
2. Locations adjacent to where roadway or infrastructure improvements are occurring.
3. Locations near pedestrian generating facilities and/or with high pedestrian activity such as schools, assisted living, recreation facilities, etc.
4. Targeted neighborhoods.
5. Locations with a high degree of non-compliance and significant barriers to accessibility.
6. Per census tracts with the highest proportion of elderly, disabilities, and poverty.
7. Other locations not listed and as funding and resources become available.

The Transition Plan for Pedestrian Curb Ramps will be reviewed and updated annually to account for completed capital projects and include additional planned projects to address ADA requirements. Additionally, the Transition Plan will be on file and available for public inspection and available in alternate formats if requested.

ADA STANDARDS

The United States Access Board has developed standards for meeting the ADA. The ADA Standards for Accessible Design (ADAAG) give the minimum requirements for accessibility in buildings and facilities. The public right-of-way presents unique

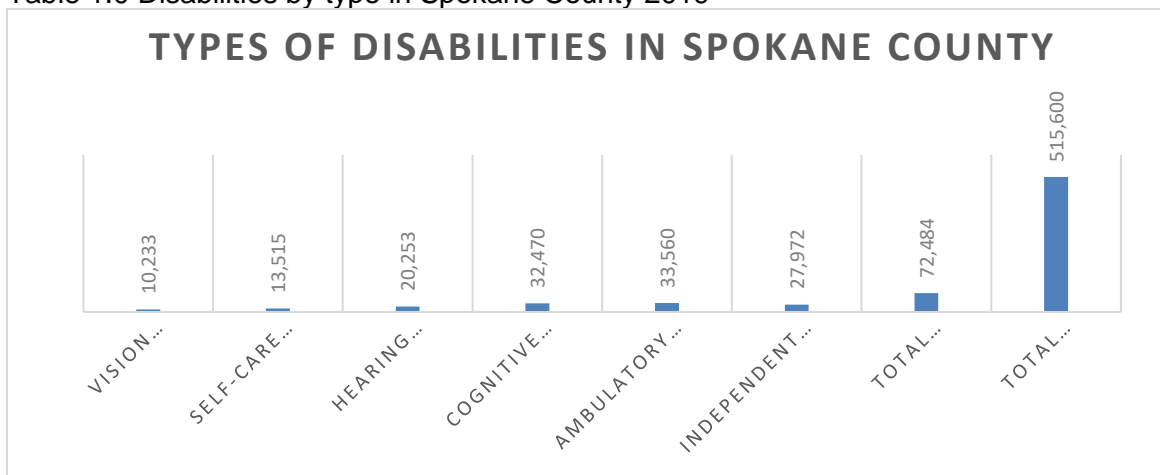
challenges to accessibility that are not necessarily covered in the ADAAG. To address these issues, the Access Board developed the Draft Guidelines for Accessible Public Rights-of-Way (PROWAG) to provide specific guidance for providing accessible pedestrian facilities. The ADAAG and the PROWAG were used to develop standards for curb ramps and sidewalks that are used on Spokane County projects. The PROWAG is the primary reference used in addressing the ADA in Spokane County’s pedestrian facilities.

Spokane County is committed to complying with the Americans with Disabilities Act to ensure that the County’s public rights-of-ways meet ADA standards and continue to improve accessibility for pedestrians throughout the County.

Vulnerable Populations

It has been estimated by the Spokane Regional Health District that 1 in 6 people live with a disability. Disabilities come in various forms, Figure 1.0 shows the various types of disabilities that people are living with in Spokane County with the highest percentage of disabilities being ambulatory and primarily affecting the elderly.

Table 1.0 Disabilities by type in Spokane County 2019



<https://data.census.gov/cedsci/table?q=disabilities%20spokane.%20wa&tid=ACSSE2019.K201803>

The 2021 American Community Survey determined that approximately 15.1% of the civilian non-institutionalized population of Spokane County has a disability. Public transportation is a common way for many people with disabilities to travel. Many people living with a disability are dependent on public transportation and many are faced with circumnavigating barriers such as distance, locations, and inadequate facilities for routine daily activities and essential services. Living with a disability can make mobility difficult, especially if there are barriers such as incomplete sidewalks or a lack of detectable warnings on curb ramps. The map in Appendix G reflects the percent of the Spokane County disabled population by census tract.

People living with disabilities are considered a vulnerable population, but the vulnerable population also includes the elderly, 65 years and older. Spokane County has an elderly population that comprises approximately 17% of Spokane County. Seniors are considered a vulnerable population based on mobility and income limitations.

Pedestrian compliant streets and amenities that are easy to navigate are important to the transportation fabric of our community because they facilitate people of all ages and abilities to travel safely without being auto dependent. As people age it is common for people to give up driving automobiles over time for physical and financial reasons. In 2015 the Spokane Regional Health District (SRHD) created an infographic report, based on the 2000 Census, to identify specific demographics. According to the report by the SRHD 6,113 elderly people, 65+, are living at the federally designated poverty level while 20,427 of our elderly population are living alone, see Appendix H for a map reflecting the elderly population in Spokane County. It is this subset of the elderly demographic that is most likely to be reliant on public transportation but also to struggle with barriers in the transportation system.

Self-Evaluation

Curb Ramps

In 2022 Spokane County completed an inventory of all curb ramps within the County right-of-way. As part of the inventory process, each curb ramp was rated and specific location details were noted. The inventory included 2,048 curb ramps and potential curb ramp locations.

Spokane County developed an inventory method that would provide enough detail to prioritize curb ramp construction and reconstruction but would not require a significant time commitment to complete. The first step was to divide the County into 13 areas. This helped organize the collection of data for the inventory. A map of these areas is included in Appendix F. The next step was to use either mapping software or site visits to determine curb ramp locations and their condition. Most urban streets in the County could be viewed using the “Street View” function of the program “Google Earth”. Site visits were made to locations that could not be seen with this program. Ramp location details and ramp ratings were then entered into a spreadsheet for analysis. The curb ramps were given a rating (1-5) as to what condition or how close to current ADA regulation they were constructed. Additionally, any new curb ramps that are built are rated, documented, and added to the inventory list so data is continually current for document updates.

Information included in the spreadsheet:

- 1) The area of the County the curb ramp is located; (Location and section of

- County curb ramps)
- 2) Road classification, whether the adjacent road is an arterial/collector or a local access road;
 - 3) Name of the main road;
 - 4) Name of the secondary road;
 - 5) Which quadrant of the intersection the ramp is located;
 - 6) Rating of the ramp (1-5);
 - 7) If the ramp is near a public facility;
 - 8) Any other notes for the location.

The following is a description of each pedestrian curb ramp rating:

Rating of 1: There is no curb ramp at a location but there should be a curb ramp.

Rating of 2: There is an existing curb ramp at the location, but it is obvious that the curb ramp does not meet current ADA standards. Running slopes, cross slopes, widths, landing areas, lips, detectable warning surfaces are among the items that do not meet current standards or do not exist.

Rating of 3: There is an existing curb ramp at the location, and it is obvious that the curb ramp does not meet current ADA standards, but it appears that curb ramp is close to ADA standards on most or many of the design items. A typical example is a curb ramp that looks close to ADA standards but does not have a detectable warning surface.

Rating of 4: There is an existing curb ramp at the location, and it appears to meet current ADA standards without an actual measurement or inspection of the specific design requirements. The design type appears to generally follow one of the approved types of curb ramps and it has an appropriate detectable warning surface. These ramps may potentially be ramps that could receive a rating of 5, but until they are measured and inspected, they are rated as a 4.

Rating of 5: There is an existing curb ramp at the location that meets current ADA standards or was known to be constructed to meet “maximum extent feasible” requirements. This is generally a ramp that was recently constructed on a county project, was inspected and known to meet current ADA standards.

The following is a summary of the rating of the curb ramps:

Number of curb ramps with a rating of 1 - 184 (9.0%)
Number of curb ramps with a rating of 2 - 256 (12.5%)
Number of curb ramps with a rating of 3 - 658 (32.1%)
Number of curb ramps with a rating of 4 - 796 (38.8%)
Number of curb ramps with a rating of 5 - 154 (7.5%)
Total Number of curb ramps – 2,048

A copy of this inventory with the rating of each curb ramp is included in Appendix D.

The inventory data for curb ramps is the basis for the Transition Plan and serves as a baseline for future improvements to existing pedestrian facilities. This database will be updated as ramp improvements are made.

Pedestrian Push Buttons

A similar method that was used to prioritize curb ramps was used to inventory and analyze pedestrian push buttons. Since Spokane County owns and maintains specific signalized pedestrian push buttons it was easy to organize and collection data for the inventory by using existing Spokane County documents and verifying the data using the “Street View” function on the program “Google Earth”.

There are a total of 19 signalized intersections in Spokane County. In 2017 Spokane County did a large pedestrian facility upgrade. Part of this upgrade was the prioritization of pedestrian push buttons at busy intersections initiated as a safety project. Of the 19 signalized intersections that Spokane County owns and maintains, 15 intersections needed to be upgraded. The improvements produced a total of 51 individual pedestrian push buttons upgraded to meet current ADA requirements. All pedestrian push buttons were reviewed and upgraded to meet clear space for operable parts, mounting heights, and accessible pedestrian signal (APS) features. APS communicates to the pedestrian through non-visual indicators such as audible tones or vibrotactile surfaces so that vision impaired or blind can safely cross the street.

Bus Stop Accessibility

Bus stops were included in this Transition Plan due to the higher probability that someone with a disability or the elderly will be reliant upon public transportation to meet their daily traveling needs. Public transportation plays an important role in how roughly a third of the public travels. In 2019 Spokane Transit Authority (STA) completed a self-assessment of all the bus stops in unincorporated Spokane County to assess ADA compliance. Newly constructed transit facilities and any transit facilities that get altered must be readily accessible to all individuals with disabilities.

There is a total of 33 bus stops within unincorporated Spokane County. Of these 33 bus stops, 12 of these stops currently meet ADA requirements or are in the process of being updated. In addition to STA’s bus stops there are three Park and Rides serving Spokane County that are fully ADA compliant. As STA services expand and grow there will be opportunity to upgrade facilities to meet the needs of our vulnerable population. Spokane County is committed to collaborative relationships with local transportation partners to meet the needs of our shared community. As part of this local collaborative effort to provide accessible transportation for all and ensure ADA compliance, Spokane County will be partnering with STA to keep the Spokane County ADA Transition Plan updated with the most current ADA transit facility information.

Self Evaluation

Spokane County has 158 miles of existing sidewalks to serve the pedestrian transportation network within the urban growth area and in unincorporated areas. Connecting sidewalks where there are gaps in connectivity will be one of the priorities that Spokane County will be continually working towards. Projects that will be prioritized will be those that fill in sidewalk gaps to schools, parks, institutions, and access to transportation corridors. Sidewalk connectivity plays an inherent role in the upgrade of pedestrian push buttons and curb ramps. Self-evaluation of the Transition Plan has encouraged an effort to bring all pedestrian push buttons into compliance with the few exceptions where it is not financially possible to be 100% ADA compliant at this time. There has also been a tremendous amount of effort put into identifying and upgrading all pedestrian curb ramps. Of the existing curb ramp infrastructure 46.3% have been rated at a 4 or higher, there is consistently an ongoing effort to improve this percentage. The most important curb ramp rating issues that need to be addressed is substandard curb ramps and nonexistent curb ramps. Curb ramps rate at 2 or 3 through the self-evaluation make up 44.6% of the inventoried ramps. The most prevailing issue with this 3 and lower category is the cross slopes and lack of detectable warnings. The remaining category is where pedestrian curb ramps are non-existent but should be constructed. This remaining category makes up roughly 9% of the inventoried curb ramps through the self-assessment analysis.

Curb ramps and pedestrian push buttons will be assessed yearly and improved upon with site development and through specially funded projects. It should be noted for locations with non-compliant curb ramp and/or sidewalk segments, an accessible route may exist within reasonable proximity to some of these locations.

Based on the self-evaluation, all the locations with pedestrian push buttons have the buttons mounted properly, have no obstructions, and are connected safely to crosswalks. There are still four remaining locations that need to be upgraded to APS. Existing pedestrian signals only require APS and pedestrian pushbuttons to be provided when the signal controller and software are altered, or the signal head is replaced per section R209.2, as stated by the Access Board. Clear space and cross slopes are other prevalent issues. This directly applies to one individual pedestrian signals. This pedestrian APS push button is non-compliant due to the cross slope, reach, and the minimum dimensions for width and length cannot be met. This signal is not able to be upgraded primarily because the infrastructure in place was not able to be completely reconstructed due to the significant cost that it would have been incurred by Spokane County.

Self-evaluation will continue to take place after the Transition Plan is complete. Reviews and updates to the Transition Plan will need to be ongoing to ensure the highest level of accessibility and compliance with ADA requirements. Examples of self-evaluation activities will consist of reviewing the Transition Plan, updating the Plan upon new development, and determining any outstanding areas in need of upgrading. If deficiencies are found, they will be documented, and the Transition Plan will be

updated. The next step will be to determine how and potentially when the identified barriers to pedestrian access will be removed.

Improvement Schedule

Improvements to infrastructure take time to identify, plan for, fund, and implement. Spokane County is dedicated to upgrading all curb ramps within county jurisdiction with annual capital improvement projects and with standalone projects as time, resources, and funding becomes available. This equates to annual improvements to the transportation infrastructure, including ADA regulated infrastructure. The four intersections that have been identified as in need of APS bush button upgrades are a planned maintenance improvement project that will be carried out over the next three years with a completion date expected by the end of the 2025 construction season.

Funding

Funding for ADA improvements are typically completed through new road improvement, reconstruction projects, or stand-alone projects. Improvements of this kind are usually funded through various grants and Spokane County Road Funds. Spokane County actively seeks grant funding for improvements to County infrastructure. Funding is sought from the following but not limited to:

- Congestion Mitigation and Air Quality Improvement Program (CMAQ)
- Transportation Alternatives-Set Aside
- Complete Streets
- Safe Routes to School
- Pedestrian/Bike Safety
- Surface Transportation Block Grant

Public engagement

Spokane County encourages public participation throughout the ongoing development of this Transition Plan. Participation is essential to creating a Transition Plan that meets the needs of the users. Public engagement will be done by using Spokane County's the Spokane County Public Works webpage and collaboration with both private and public groups. Proactive outreach will gather public opinion, concerns, and help to inform the public about the ADA Transition Plan while gathering tools needed to prioritize pedestrian improvements. This will help to solicit feedback on the ADA Transition Plan and to further identify barriers. Responses to the document will aid in the ongoing development of the ADA Transition Plan.

Ensuring Compliance and Program Schedule

Curb Ramps

Existing pedestrian facilities in the public right-of-way must be made accessible to individuals with disabilities. Necessary curb ramp improvements identified in the self-evaluation will be addressed with scheduled roadway projects as well as separate projects to specifically address pedestrian accessibility.

When a county road is altered beyond minor maintenance activities, the ADA requires adjacent pedestrian ramps to be brought up to standards. The County will adhere to this requirement for all roadway projects. In addition, County funds will be set aside to address ADA needs on facilities that do not currently have a road project. Ramps with ratings of 1 will be addressed first. Ramps not meeting ADA Standards or locations without a ramp will be bundled together by areas to form an improvement project. Projects will be scoped, bundled, and constructed every two to three years as funding allows. This ensures that sizable improvements can be made, with flexibility, to address curb ramps and signals that are not in compliance rather than small spot treatment improvements. Once the projects with curb ramps that are out of ADA compliance or lacking a ramp, with a rating of 1, are brought to current standards the County will successively work on improving curb ramps with higher ratings. Those curb ramps with a rating of 4 will be measured to verify if improvements are needed or if they can be re-rated to a rating of 5 or meets current standards.

Pedestrian Push Buttons

The pedestrian project upgrade of 2017 brought a significant number of pedestrian push buttons that Spokane County owns, operates, and maintains to ADA compliance. Despite a concerted effort to bring crosswalks and pedestrian push buttons up to current ADA standards, there are still areas that need to be improved. From inventory analysis this looks as if meeting compliance consists primarily of installing four more pedestrian signals with APS and meeting clear space requirements consisting of the following: 2% slope, clear space, reach range, and minimum length and width requirements. Some of these deficiencies can be attributed to infrastructure that has been in place before the current requirements applied and the cost to retrofit would be financially burdensome to Spokane County as of right now. Repairs will be scheduled to occur upon new development or as funding becomes available.

Currently, it is Spokane County's policy to have all pedestrian push buttons APS compatible on the following type of construction projects:

1. All new signals projects.
2. All major signal alteration projects.

Additionally, to compliment the new APS pedestrian push button upgrades all crosswalks in Spokane County are compliant with the Manual on Uniform Traffic Control Devices (MUTCD) regulating the amount of time pedestrians get to cross an intersection. Considering that a Spokane County is predominantly rural, the crosswalks are set to have a 6 second "WALK" before they flash the "DON'T WALK" and the signal countdown starts.

Bus Route Accessibility

Spokane County and the Spokane Transportation Authority (STA) will continue to work together to meet the transportation demands for the disabled and elderly. This includes communication on facility upgrades to ensure data for the Transition Plan stays current.

Grievance Policy and Procedures

The ADA grievance procedure is established to meet the requirements of the Americans with Disabilities Act of 1990. This is a resource for anyone wishing to file a complaint alleging discrimination based on disability in the provision of services, activities, or programs by Spokane County.

The complaint should be made in writing, when possible, and contain information about the alleged discrimination. Please include your name, address, phone number, and location, date, and description of the situation. Alternative means of filing a complaint will be made available for persons with disabilities upon request.

Program Responsibility / ADA Coordinator

Spokane County is required to designate an employee to be the ADA Coordinator. The coordinator will be responsible for implementation of the Transition Plan, ensure compliance, and handle any grievances or concerns. The designated Countywide ADA Coordinator is Ashley Cameron. She is currently Spokane County's Senior Director of Human Resources. Any complaints or grievances are to be submitted in writing to her. A copy of Spokane County's Grievance procedures can be found in Appendix A. Additionally, if accommodations or alternate formats of documents or materials are requested, please contact the Countywide ADA Coordinator. Please allow 48 hours for response times.

Requests should include:

- Your name, address, email, and phone number
- Item you are requesting be reformatted
- Format desired

Ashley Cameron
Senior Director
Human Resources/ADA Coordinator
824 N Adams St.
Spokane, WA 99260-0170
(509) 477-2122
acameron@spokanecounty.org

The person responsible for the implementation of this ADA Transition plan for pedestrian curb ramps is Spokane County's Transportation Development services Manager. Currently this person along with their contact information is:

Barry Greene
Transportation Development Services Manager
Spokane County Public Works
1026 W. Broadway Ave.
Spokane, WA 99260-0170
(509) 477-7444
bgreene@spokanecounty.org

Input, concerns, or requests for accommodation can be provided directly to Spokane County by accessing the Spokane County web site at www.spokanecounty.org, clicking on "Contact Us" in the upper left corner. A drop-down menu will appear, and you will be prompted to fill out and submit the electronic form provided. Public requests made through this procedure will be reviewed and the facility in question may be moved to a higher priority for improvement. Priorities may change based upon citizen requests, additional input and changing conditions. Results of this process will be communicated directly to the individual by phone or e-mail. Individuals may also choose to call the Transportation Development services Manager directly. (Contact information listed above.)

Spokane County also has a formal grievance or complaint procedure which may be used if the issue has not been resolved by using the above procedure. A copy of this grievance procedure is included in appendix A. A copy of the grievance procedure may also be obtained at Spokane County's Human Resource office.

Complaints may be filed by any person who believes that he or she has been excluded from participation in, been denied the benefits of, or otherwise subjected to discrimination under any Spokane County service, program or activity, and believes the discrimination is based upon disability.

Any individual, groups of individuals or entity that believes they have been discriminated against on the basis of disability or faced unaccommodated barriers to access as defined by the ADA may file a complaint. The complaint must be in writing and contain the following information: 1) Name; 2) Address; 3) Phone number of

complainant; 4) Location, date; and 5) Description of the problem. Alternative means of filing complaints, such as personal interviews or a tape recording of the complaint will be made available for persons with disabilities upon request.

References and Resources

ADAAG

<http://www.ada.gov/stdspdf.htm>

Community Resources for Persons with Disabilities

https://s3.wp.wsu.edu/uploads/sites/869/2015/06/2016_Resources_for_Persons_with_Disabilities.pdf

Department of Justice Section 28 CFR Part 35

<http://www2.ed.gov/policy/rights/reg/ocr/28cfr35.pdf>

Northwest ADA Center

<http://nwadacenter.org/state-resources>

PROWAG

<http://www.access-board.gov/guidelines-and-standards/streets-sidewalks>

Spokane County Public Works

<https://www.spokanecounty.org/257/Public-Works>

SRTC

<https://srtc.maps.arcgis.com/apps/MapSeries/index.html?appid=faf7df9112e54c01bb21b681f1bd5d70>

US Access Board

<http://www.access-board.gov/>

US Department of Justice

<http://www.ada.gov/>

United States Census Bureau

<https://www.census.gov/quickfacts/spokanecountywashington>

Appendix A
Spokane County's "Notice of Grievance Procedures
Under the Americans with Disabilities Act"

<https://www.spokanecounty.org/DocumentCenter/View/23739/SCRBH-ASO-Final-Grievance-and-Appeal-Process-Jan-2019>

NOTICE OF GRIEVANCE PROCEDURES UNDER THE AMERICANS WITH
DISABILITIES ACT

Spokane County provides grievance procedures for individuals who have reason to believe that they have been the subject of discrimination on the basis of disability under the Americans With Disability Act of Amendments Act of 2008 (ADAAA) and the Washington Law Against Discrimination (WLAD) as a result of the manner in which the County provides employment, services, programs or activities.

Overview: These procedures cover complaints filed under the ADAAA and WLAD relating to any employment, program, facility or activity managed by Spokane County. The procedures do not deny the right of the complainant to file formal complaints with other state or federal agencies or to seek private counsel for complaints alleging discrimination or unaccommodated barriers to access. Effort will be made to resolve complaints informally at the County level. The option of informal mediation meeting(s) between the affected parties and a designated mediator may be utilized for resolution. Intimidation or retaliation of any kind on the part of Spokane County is prohibited by law.

Any individual, group of individuals or entity that believes they have been discriminated against on the basis of disability or faced unaccommodated barriers to access as defined by the ADAAA may file a complaint. The complaint must be in writing and contain information such as name, address, phone number of complainant and location, date, and description of the problem. Alternative means of filing complaints, such as personal interviews or a tape recording of the complaint will be made available for persons with disabilities upon request. The complaint should be submitted as soon as possible after the alleged violation. It must be submitted to:

Ashley Cameron
Senior Director of Human Resources
824 N. Adams Street
Spokane, WA 99260

After Complaint is Received: After receiving the written complaint, the Countywide ADA Coordinator, in consultation with other county offices, will determine its jurisdiction, acceptability, need for additional information and the investigative merit of the complaint.

Investigative Report: Within 60 days of receipt of the original, completed complaint, the Countywide ADA Coordinator will prepare a proposed investigative report for review by the

appropriate elected official and/or department director. After review and consultation with the appropriate official(s), the final report shall include a narrative description of the incident, identification of persons interviewed and findings and recommendations for disposition. The report shall also conclude with a short explanation of the complainant's right of appeal under this policy.

Notification of Decision: Once the investigative report becomes final, briefings will be scheduled with each party within 15 days. Both the complainant and applicable Department Officials shall receive a copy of the report.

Appeal: If the response by the ADA Coordinator or his designee does not satisfactorily resolve the issue, the complainant and/or his/her designee may appeal the decision within 15 calendar days after receipt of the response to the Spokane County Executive Officer (CEO) or his/her designee.

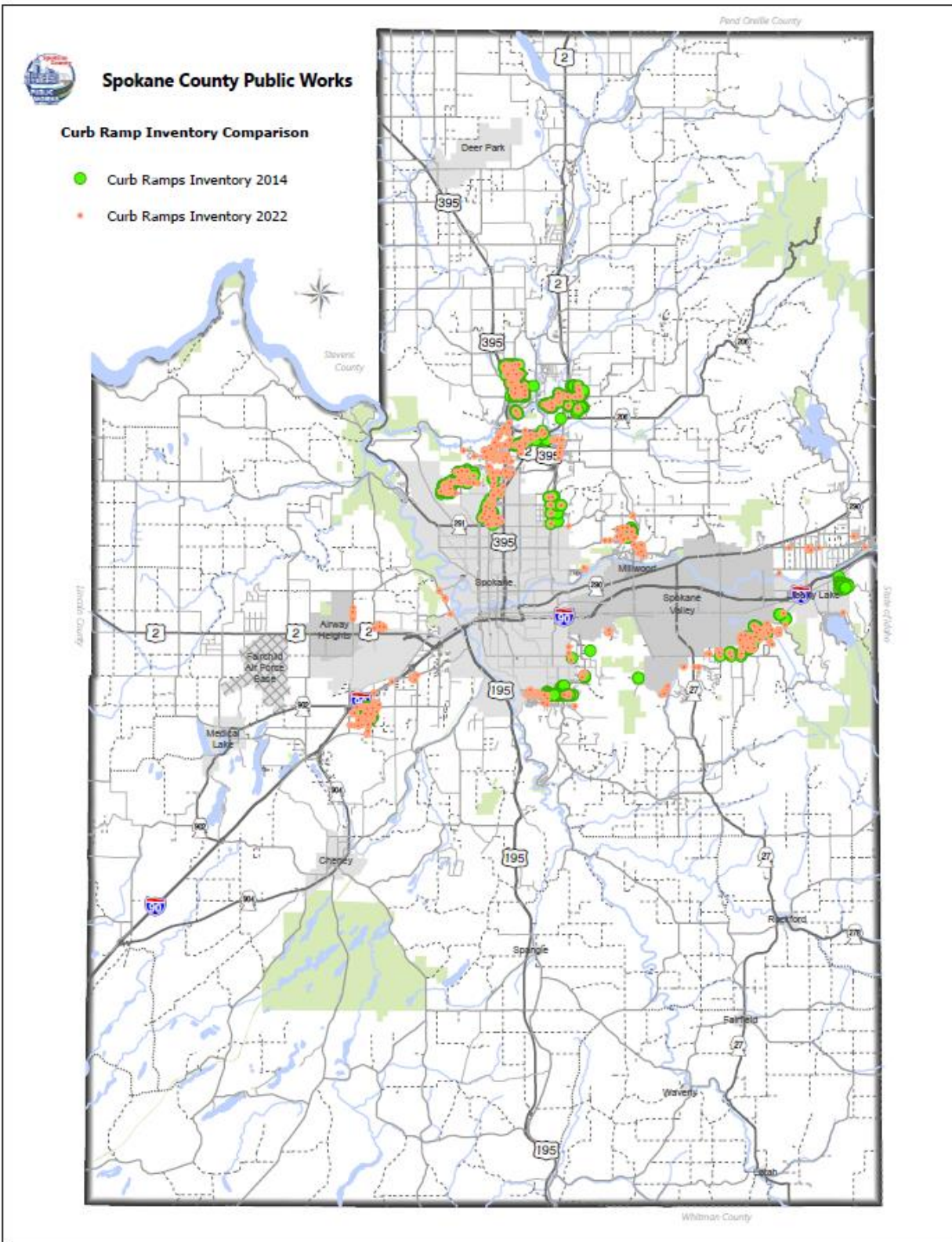
Within 15 calendar days after receipt of the appeal, the CEO or his/her designee will meet with the complainant to discuss the complaint and possible resolutions. Within 15 calendar days after meeting the CEO or his/her designee will respond in writing, and, where appropriate, in a format accessible to the complainant, with a final resolution of the complaint.

Filing a Complaint with the US Department of Justice: The complainant may file a complaint with the US Department of Justice. "A complaint must be filed not later than 180 days from the date of the alleged discrimination, unless the time for filing is extended by the designated agency for good cause shown." 28 C.F.R. 35.170 (b). This is not an appeal, but a separate legal action available independent of the County's grievance procedures.

Log of Complaints: The Countywide ADA Coordinator will maintain a log of complaints. This log will keep complaints for at least six (6) years and will contain the following information for each complaint filed: 1) the name and address of the person filing the complaint; 2) the date of the complaint; 3) the basis of the complaint; 4) the disposition of the complaint; 5) the status of the complaint.

Appendix B

Comparative Map of Spokane County Pedestrian Curb Ramps



Appendix C Examples of Pedestrian Curb Ramp Condition Ratings



One of the 15 curb ramp improvements at signalized intersections from the 2017 Spokane County Signal Safety Project.



Curb ramps at the corner of 5 Mile Road and Roger Dr., rated 4 out of 5.



Curb ramp at the corner of Wall St. and Shasta Way, rated 3 out of 5.



Curb ramp at the corner of Argonaut Rd and Lynwood, rated 1 out of 5.



Although this intersection was fitted with APS pedestrian push buttons, this is a clear example of one of the few crosswalks that does not meet ADA requirements for Clear Space and the subsections of clear space requirements such as meeting the 30" by 48" landing requirements.

Appendix D

Curb Ramp Inventory Summary and Details

Area	Arterial or Collector	Main Road	Cross Street	Quadrant (NE, NW, SE, SW)	Ramp Rating (1-5)
1	Y	Hayford	Chevron Drwy S. of Sprague	SW	4
1	Y	Hayford	Chevron Drwy S. of Sprague	NW	4
1	Y	Hayford	Sprague	SW	4
1	Y	Hayford	Sprague	NW	4
1	Y	Hayford	Drwy S. of N. Quest Dr.	SE	4
1	Y	Hayford	Drwy S. of N. Quest Dr.	NE	4
1	Y	Hayford	Northern Quest Dr.	SW	4
1	Y	Hayford	Northern Quest Dr.	NW	4
1	Y	Hayford	Northern Quest Dr.	SE	4
1	Y	Hayford	Northern Quest Dr.	NE	4
1	Y	Hayford	Access Drwy N. of N. Quest Dr.	SE	4
1	Y	Hayford	Access Drwy N. of N. Quest Dr.	NE	4
1	Y	Government Way	Ft. George Wright Way	NE	4
1	Y	Government Way	Ft. George Wr. Wy Traf. Is.	NE	3
1	Y	Government Way	Ft. George Wr. Wy Traf. Is.	SE	3
1	Y	Government Way	Ft. George Wr. Wy Traf. Is.	NE	3
1	Y	Government Way	Ft. George Wr. Wy Traf. Is.	SE	3
1	Y	Government Way	Ft. George Wright Way	SE	2
1	Y	Government Way	Drwy N. of River Ridge Bl.	NE	4
1	Y	Government Way	Drwy N. of River Ridge Bl.	SE	4
1	Y	Government Way	Drwy N. of River Ridge Bl.	NW	4
1	Y	Government Way	Drwy N. of River Ridge Bl.	SW	4
1	Y	Government Way	River Ridge Bl.	NE	4
1	Y	Government Way	River Ridge Bl.	SE	4
1	Y	Government Way	Greenwood	NE	1
1	Y	Government Way	Greenwood	SE	1
1	N	12th Ave.	West Campus Dr.	NW	4
1	N	12th Ave.	West Campus Dr.	NE	4
1	N	West Campus Dr.	Pirates Ct.	SW	4
1	N	West Campus Dr.	Pirates Ct.	NW	4
1	N	West Campus Dr.	Pirates Ct.	East	4
1	N	West Campus Dr.	Sun Devil Ct.	SW	4
1	N	West Campus Dr.	Sun Devil Ct.	NW	4
1	N	West Campus Dr.	Sun Devil Ct.	NE	4

1	N	West Campus Dr.	Sun Devil Ct.	SE	4
1	N	West Campus Dr.	Oswalt St.	SW	4
1	N	West Campus Dr.	Oswalt St.	NW	4
1	N	West Campus Dr.	Oswalt St.	NE	4
1	N	West Campus Dr.	Oswalt St.	SE	4
1	N	West Campus Dr.	Eagles Ct.	NW	4
1	N	West Campus Dr.	Eagles Ct.	NE	4
1	N	West Campus Dr.	Eagles Ct.	South	4
1	N	West Campus Dr.	Soda	SW	4
1	N	West Campus Dr.	Soda	NW	4
1	N	West Campus Dr.	Soda	NE	4
1	N	West Campus Dr.	Soda	SE	4
1	N	West Campus Dr.	Cougar Ct.	NW	4
1	N	West Campus Dr.	Cougar Ct.	NE	4
1	N	West Campus Dr.	Cougar Ct.	South	4
1	N	West Campus Dr.	Un-named St.	NW	4
1	N	West Campus Dr.	Un-named St.	NE	4
1	N	West Campus Dr.	Un-named St.	South	4
1	N	West Campus Dr.	Pillar Rock Dr.	SW	4
1	N	West Campus Dr.	Pillar Rock Dr.	NW	4
1	N	West Campus Dr.	Pillar Rock Dr.	NE	4
1	N	West Campus Dr.	Pillar Rock Dr.	SE	4
1	N	West Campus Dr.	Vandals Ct.	NW	4
1	N	West Campus Dr.	Vandals Ct.	NE	4
1	N	West Campus Dr.	S. of Vandals Ct.	NW	4
1	N	West Campus Dr.	S. of Vandals Ct.	NE	4
2	Y	Waikiki	Osprey Ln	NW	3
2	Y	Waikiki	Osprey Ln	NE	2
2	Y	Waikiki	Golden Pond Ln.	SW	3
2	Y	Waikiki	Regina Ave.	SE	4
2	Y	Waikiki	Marc Dr.	SE	2
2	Y	Waikiki	Fairwood Dr.	South	2
2	Y	Waikiki	Fairwood Dr.	NW	3
2	Y	Waikiki	Fairwood Dr.	NE	3
2	Y	Waikiki	Mill Rd. Roundabout	West Leg (4)	5
2	Y	Waikiki	Mill Rd. Roundabout	N. Leg (4)	5
2	Y	Waikiki	Mill Rd. Roundabout	S. Leg (4)	5
2	Y	Waikiki	N. 5 Mile Rd.	NW	4
2	Y	Waikiki	N. 5 Mile Rd.	SW	5
2	Y	Waikiki	N. 5 Mile Rd.	East	5
2	Y	Waikiki	Pinewood Rd.	NE	5
2	Y	Waikiki	Pinewood Rd.	SE	5
2	Y	Waikiki	Banbury Dr.	NW	5
2	Y	Waikiki	Banbury Dr.	SW	5
2	Y	Waikiki	Hawthorne Rd.	NE	5

2	Y	Waikiki	Hawthorne Rd.	NW	5
2	Y	Waikiki	Hawthorne Rd.	SW	5
2	Y	Waikiki	Hawthorne Rd.	SE	5
2	Y	Waikiki	Briar Cliff Ct.	NE	5
2	Y	Waikiki	Briar Cliff Ct.	SE	5
2	Y	Waikiki	Westover Ave.	NW	5
2	Y	Waikiki	Westover Ave.	SW	5
2	Y	Waikiki	Bowling	NW	5
2	Y	Waikiki	Bowling	SW	5
2	Y	Waikiki	College Rd.	NE	2
2	Y	Waikiki	College Rd.	SE	2
2	Y	Strong Rd.	Warren	NW	4
2	Y	Strong Rd.	Warren	NE	4
2	Y	Strong Rd.	Dorset	NW	4
2	Y	Strong Rd.	Dorset	NE	4
2	Y	Strong Rd.	Prescott	NW	4
2	Y	Strong Rd.	Prescott	NE	4
2	Y	5 Mile Rd.	Johannsen Rd.	SE	4
2	Y	5 Mile Rd.	Johannsen Rd.	NE	4
2	Y	5 Mile Rd.	Prairie Breeze Ave.	SW	4
2	Y	5 Mile Rd.	Prairie Breeze Ave.	NW	4
2	Y	5 Mile Rd.	Rogers Rd.	SE	4
2	Y	5 Mile Rd.	Rogers Rd.	NE	4
2	Y	5 Mile Rd.	Westover Ln.	SW	4
2	Y	5 Mile Rd.	Westover Ln.	NW	4
2	Y	5 Mile Rd.	Westover Ln.	East	4
2	Y	5 Mile Rd.	Hawthorne Rd. (East)	SE	4
2	Y	5 Mile Rd.	Hawthorne Rd. (East)	NE	4
2	Y	5 Mile Rd.	Hawthorne Rd. (East)	West	4
2	Y	5 Mile Rd.	Hawthorne Rd. (West)	SW	4
2	Y	Country Homes	Cedar St.	SE	3
2	Y	Country Homes	Cedar St.	NE	4
2	Y	Country Homes	Cedar St.	West	1
2	Y	Country Homes	Wedgewood	SE	4
2	Y	Country Homes	Wedgewood	NE	4
2	Y	Country Homes	Excel Dr.	SE	4
2	Y	Country Homes	Excel Dr.	NE	4
2	Y	Country Homes	Warn Wy.	SE	4
2	Y	Country Homes	Warn Wy.	NE	4
2	Y	Country Homes	Jefferson Dr.	SE	4
2	Y	Country Homes	Jefferson Dr.	NE	4
2	Y	Country Homes	Cascade Wy.	SE	4
2	Y	Country Homes	Cascade Wy.	NE	4
2	Y	Country Homes	Carolina Wy.	SE	4
2	Y	Country Homes	Carolina Wy.	NE	4

2	Y	Country Homes	Wall St.	SW	4
2	Y	Country Homes	Wall St.	SE	4
2	Y	Country Homes	Wall St.	NE	4
2	Y	Country Homes	Wall St.	NW	4
2	Y	Country Homes	Stevens Dr.	SW	3
2	Y	Country Homes	Stevens Dr.	SE	3
2	Y	Country Homes	Tieton Ave./Weipert Dr.	SW	3
2	Y	Country Homes	Tieton Ave./Weipert Dr.	SE	3
2	Y	Country Homes	Tieton Ave./Weipert Dr.	NE	3
2	Y	Country Homes	Tieton Ave./Weipert Dr.	NW	3
2	Y	Country Homes	Whitehouse St.	NW	3
2	Y	Country Homes	Whitehouse St.	NE	2
2	Y	Monroe	Rosewood	NE	4
2	Y	Monroe	Rosewood	SE	4
2	Y	Monroe	Rosewood	SW	4
2	Y	Monroe	Rosewood	NW	4
2	Y	Monroe	Avon	NE	3
2	Y	Monroe	Avon	SE	3
2	Y	Monroe	Avon	SW	3
2	Y	Monroe	Avon	NW	2
2	Y	Monroe	Holyoak	NE	3
2	Y	Monroe	Holyoak	SE	3
2	Y	Monroe	Holyoak	SW	3
2	Y	Monroe	Holyoak	NW	3
2	Y	Monroe	Franklin Ave.	SW	3
2	Y	Monroe	Franklin Ave.	NW	3
2	Y	Monroe	Beacon Ave.	SW	3
2	Y	Monroe	Beacon Ave.	NW	3
2	Y	Monroe	Wedgewood	NE	3
2	Y	Monroe	Wedgewood	SE	3
2	Y	Monroe	Wedgewood	SW	3
2	Y	Monroe	Wedgewood	NW	3
2	Y	Monroe	Weile Ave.	NE	3
2	Y	Monroe	Weile Ave.	SE	3
2	Y	Monroe	Weile Ave.	SW	3
2	Y	Monroe	Weile Ave.	NW	3
2	Y	Monroe	Eastmont Way	NE	3
2	Y	Monroe	Eastmont Way	SW	3
2	Y	Monroe	Eastmont Way	NW	3
2	Y	Monroe	Wall St.	SW. Leg, W. Side	3
2	Y	Monroe	Wall St.	SW. Leg, E. Side	3
2	Y	Monroe	Wall St.	S. Leg, W. Side	3
2	Y	Monroe	Wall St.	S. Leg, E. Side	2
2	Y	Wall St.	Rosewood	SW	2
2	Y	Wall St.	Rosewood	NW	2

2	Y	Wall St.	Houston	SE	2
2	Y	Wall St.	Houston	NE	2
2	Y	Wall St.	Avon	SW	2
2	Y	Wall St.	Avon	NW	2
2	Y	Wall St.	Holyoak	SW	2
2	Y	Wall St.	Holyoak	NW	3
2	Y	Wall St.	Lyons	SE	2
2	Y	Wall St.	Lyons	NE	2
2	Y	Wall St.	Wedgewood (East)	SE	2
2	Y	Wall St.	Wedgewood (East)	NE	2
2	Y	Wall St.	Wedgewood (West)	SW	1
2	Y	Wall St.	Wedgewood (West)	NW	2
2	Y	Wall St.	Weile Ave.	SW	2
2	Y	Wall St.	Weile Ave.	NW	4
2	Y	Wall St.	Weile Ave.	East	3
2	Y	Wall St.	Greta Ave.	SE	3
2	Y	Wall St.	Greta Ave.	NE	3
2	Y	Wall St.	Greta Ave.	SW	3
2	Y	Wall St.	Greta Ave.	NW	3
2	Y	Wall St.	Vernon Ave.	SE	2
2	Y	Wall St.	Vernon Ave.	NE	2
2	Y	Wall St.	Westmont Way	SW	3
2	Y	Wall St.	Westmont Way	NW	3
2	Y	Wall St.	Cascade Wy.	SE	3
2	Y	Wall St.	Cascade Wy.	NE	3
2	Y	Wall St.	Cascade Wy.	West	2
2	Y	Wall St.	Carolina Wy.	SE	3
2	Y	Wall St.	Carolina Wy.	NE	3
2	Y	Wall St.	Carolina Wy.	SW	3
2	Y	Wall St.	Carolina Wy.	NW	3
2	Y	Wall St.	Shasta Wy.	SE	3
2	Y	Wall St.	Shasta Wy.	NE	3
2	Y	Wall St.	Shasta Wy.	West	3
2	Y	Wall St.	Price Ave. / Benton	SW	4
2	Y	Wall St.	Price Ave. / Benton	NW	4
2	Y	Wall St.	Price Ave. / Benton	NE	4
2	Y	Wall St.	Price Ave. / Benton	SE	4
2	Y	Wall St.	Tieton Ave.	SE	4
2	Y	Wall St.	Tieton Ave.	NE	4
2	Y	Wall St.	Tieton Ave.	West	4
2	Y	Wall St.	Jay Ave.	SE	4
2	Y	Wall St.	Jay Ave.	NE	4
2	Y	Wall St.	Barnes Rd.	SE	4
2	Y	Wall St.	Barnes Rd.	NE	4
2	Y	Wall St.	Ivanhoe St.	SW	4

2	Y	Wall St.	Ivanhoe St.	NW	4
2	Y	Wall St.	Ivanhoe St.	NE	4
2	Y	Wall St.	Ivanhoe St.	SE	4
2	Y	Wall St.	Mountain View Ave.	SW	3
2	Y	Wall St.	Mountain View Ave.	NW	3
2	Y	Wall St.	Holland Ave.	SW	4
2	Y	Wall St.	Holland Ave.	NW	4
2	Y	Wall St.	Holland Ave.	NE	4
2	Y	Wall St.	Holland Ave.	SE	4
2	Y	Wall St.	Graves Rd.	SE	4
2	Y	Wall St.	Graves Rd.	NE	4
2	Y	Wall St.	Westview Ave.	SW	4
2	Y	Wall St.	Westview Ave.	NW	4
2	Y	Wall St.	Waikiki / Whitworth Dr.	SE	4
2	Y	Wall St.	Waikiki / Whitworth Dr.	S. in Is.	4
2	Y	Wall St.	Waikiki / Whitworth Dr.	N. in Is.	4
2	Y	Wall St.	Waikiki / Whitworth Dr.	NE	4
2	Y	Mill Rd.	Woodway Ave.	SE	5
2	Y	Mill Rd.	Woodway Ave.	NE	5
2	Y	Mill Rd.	Woodway Ave.	West	5
2	Y	Mill Rd.	Regina Ave.	SE	5
2	Y	Mill Rd.	Regina Ave.	NE	5
2	Y	Mill Rd.	Regina Ave.	West	5
2	Y	Mill Rd.	Bellwood Dr.	SW	5
2	Y	Mill Rd.	Bellwood Dr.	NW	5
2	Y	Mill Rd.	Bellwood Dr.	NE	5
2	Y	Mill Rd.	Bellwood Dr.	SE	5
2	Y	Mill Rd.	Hastings Rd.	SE	5
2	Y	Mill Rd.	Regina Ave.	NE	4
2	Y	Mill Rd.	Regina Ave.	West	4
2	Y	Mill Rd.	Fairwood Dr.	SW	4
2	Y	Mill Rd.	Fairwood Dr.	NW	2
2	Y	Mill Rd.	Fairwood Dr.	East	4
2	Y	Mill Rd.	Fairwood Ln. (South)	SW	2
2	Y	Mill Rd.	Fairwood Ln. (South)	NW	2
2	Y	Mill Rd.	Fairwood Ln. (North)	SW	2
2	Y	Mill Rd.	Fairwood Ln. (North)	NW	2
2	Y	Mill Rd.	Arrow Ln.	SW	3
2	Y	Mill Rd.	Arrow Ln.	NW	3
2	Y	Mill Rd.	Center St.	SW	2
2	Y	Mill Rd.	Center St.	NW	3
2	Y	Mill Rd.	Wilson Ave.	SW	3
2	Y	Mill Rd.	Wilson Ave.	NW	3
2	Y	Mill Rd.	Addison St.	SE	4
2	Y	Mill Rd.	Addison St.	NE	4

2	Y	Mill Rd.	Dartford	NW (2)	5
2	Y	Mill Rd.	Dartford	NE (2)	5
2	Y	Mill Rd.	Dartford	SE	5
2	Y	Mill Rd.	Dartford	SW	5
2	Y	Lyons Ave.	Howard	NW	3
2	Y	Lyons Ave.	Howard	NE	3
2	Y	Lyons Ave.	Howard	SE	3
2	Y	Lyons Ave.	Howard	SW	3
2	Y	Lyons Ave.	Stevens	NW	3
2	Y	Lyons Ave.	Stevens	NE	3
2	Y	Lyons Ave.	Stevens	SE	3
2	Y	Lyons Ave.	Stevens	SW	3
2	Y	Lyons Ave.	Washington	NW	3
2	Y	Lyons Ave.	Washington	NE	3
2	Y	Lyons Ave.	Washington	SE	3
2	Y	Lyons Ave.	Washington	SW	3
2	Y	Lyons Ave.	Whitehouse St.	NW	3
2	Y	Lyons Ave.	Whitehouse St.	NE	3
2	Y	Lyons Ave.	Whitehouse St.	SE	3
2	Y	Lyons Ave.	Whitehouse St.	SW	3
2	Y	Lyons Ave.	Calispel St.	NW	2
2	Y	Lyons Ave.	Calispel St.	NE	2
2	Y	Lyons Ave.	Calispel St.	SE	2
2	Y	Lyons Ave.	Calispel St.	SW	2
2	Y	Lyons Ave.	Normandie	NW	2
2	Y	Lyons Ave.	Normandie	NE	2
2	Y	Lyons Ave.	Normandie	SE	2
2	Y	Lyons Ave.	Normandie	SW	2
2	Y	Price	Alcan St.	South	2
2	Y	Price	Calispel St./School Dr.	SW	4
2	Y	Price	Calispel St./School Dr.	SE	4
2	Y	Price	School Dr.	SW	4
2	Y	Price	School Dr.	SE	4
2	Y	Holland	Holmberg Ln.	NW	2
2	Y	Holland	Holmberg Ln.	NE	2
2	Y	Whitworth Dr.	Ivanhoe (North)	NE	3
2	Y	Whitworth Dr.	Ivanhoe (South)	North	3
2	Y	Whitworth Dr.	Ivanhoe (South)	SE	3
2	Y	Whitworth Dr.	Ivanhoe (100' South)	NW	5
2	Y	Hawthorne	College/Whitworth Entr.	NW	2
2	Y	Hawthorne	College/Whitworth Entr.	NE	3
2	Y	Hawthorne	College/Whitworth Entr.	SE	3
2	Y	Hawthorne	College/Whitworth Entr.	SW	3
2	Y	Hawthorne	Midblock Crossing - 1	SW	4
2	Y	Hawthorne	Midblock Crossing - 1	SW	4

2	Y	Hawthorne	Midblock Crossing - 2	SW	4
2	Y	Hawthorne	Midblock Crossing - 2	SW	4
2	Y	Hawthorne	Ivanhoe/Whitworth Entr.	NW	2
2	Y	Hawthorne	Ivanhoe/Whitworth Entr.	NE	2
2	Y	Hawthorne	Ivanhoe/Whitworth Entr.	SE	3
2	Y	Hawthorne	Ivanhoe/Whitworth Entr.	SW	3
2	Y	Hawthorne	Whitworth Dr.	NW (2)	3, 2
2	Y	Hawthorne	Whitworth Dr.	NE	3
2	Y	Hawthorne	Whitworth Dr.	SE (2)	3
2	Y	Hawthorne	Whitworth Dr.	SW	3
2	Y	Hawthorne	Wellen Ln.	SW	3
2	Y	Hawthorne	Wellen Ln.	SE	3
2	Y	Regina	Madison	NW	3
2	Y	Regina	Madison	NE	3
2	Y	Regina	Madison	SE	3
2	Y	Regina	Madison	SW	3
2	Y	Regina	Monroe Ct.	NW	3
2	Y	Regina	Monroe Ct.	NE	3
2	Y	Regina	Lincoln Ct.	NW	3
2	Y	Regina	Lincoln Ct.	NE	3
2	Y	Regina	Wall St.	NW	3
2	Y	Regina	Wall St.	NE	3
2	Y	Regina	Wall St.	SE	3
2	Y	Regina	Wall St.	SW	3
2	Y	Regina	Howard Ct.	NW	3
2	Y	Regina	Howard Ct.	NE	3
2	Y	Regina	Stevens/School Drive	NW	3
2	Y	Regina	Stevens/School Drive	NE	3
2	Y	Regina	Stevens/School Drive	SE	3
2	Y	Regina	Stevens/School Drive	SW	3
2	Y	Regina	Mid Block Cr./School Drive	NW	3
2	Y	Regina	Mid Block Cr./School Drive	North	3
2	Y	Regina	Mid Block Cr./School Drive	NE	3
2	Y	Regina	Mid Block Cr./School Drive	South	3
2	Y	Regina	Whitehouse/School Drive	NW	2
2	Y	Regina	Whitehouse/School Drive	NE	2
2	Y	Regina	Whitehouse/School Drive	SE	3
2	Y	Regina	Whitehouse/School Drive	SW	3
2	Y	Regina	Florence	NW	3
2	Y	Regina	Florence	NE	3
2	Y	Regina	Normandie	SE	3
2	Y	Regina	Normandie	SW	3
2	Y	Regina	Atlantic (South)	SE	3
2	Y	Regina	Atlantic (South)	SW	3
2	Y	Regina	Atlantic (North)	NW	3

2	Y	Regina	Atlantic (North)	NE	3
2	Y	Regina	Salmon	SE	3
2	Y	Regina	Salmon	SW	3
2	Y	Hastings	Bellwood Dr.	North	3
2	Y	Hastings	Bellwood Dr.	SW	4
2	Y	Hastings	Bellwood Dr.	SE	3
2	Y	Hastings	Bellwood Dr.	NE	2
2	Y	Hastings	Washington/Crossing	North	3
2	Y	Hastings	Washington/Crossing	SW	2
2	Y	Hastings	Washington/Crossing	SE	2
2	Y	Hastings	Normandie/Crossing	North	2
2	Y	Hastings	Normandie/Crossing	SW	2
2	Y	Hastings	Normandie/Crossing	SE	2
2	Y	Hastings	Ruby Rd.	NW	2
2	Y	Hastings	Ruby Rd.	NE	2
2	Y	Hastings	Ruby Rd.	SE	2
2	Y	Hastings	Ruby Rd.	SW	2
2	Y	Hastings	Mayfair	NW	4
2	Y	Hastings	Mayfair	NE	4
2	Y	Hastings	Mayfair	SE	3
2	Y	Hastings	Mayfair	SW	2
2	N	Reese Ct.	Cul-de-sac W. of Russle	North	4
2	N	Reese Ct.	Cul-de-sac W. of Russle	South	4
2	N	Russle	Reese Ct.	North	4
2	N	Russle	Reese Ct.	South	4
2	N	Russle	North End	West	4
2	N	Russle	North End	NE	4
2	N	Russle	North End	SE	4
2	N	Maxine	K Ct.	SE	3
2	N	Maxine	K Ct.	SW	3
2	N	Warren	Tieton	SE	3
2	N	Warren	Tieton	NE	3
2	N	Warren	Maxine	SW	3
2	N	Warren	Jay/Scarlet Sky Dr.	SW	4
2	N	Warren	Jay/Scarlet Sky Dr.	NW	4
2	N	Warren	Jay/Scarlet Sky Dr.	NE	4
2	N	Warren	Jay/Scarlet Sky Dr.	SE	4
2	N	Warren	Bradbury	SE	4
2	N	Warren	Bradbury	NE	4
2	N	Warren	Moonlight Ct.	SE	4
2	N	Warren	Moonlight Ct.	NE	4
2	N	Warren	Moonlight Ct.	West	4
2	N	Warren	Dawn	SW	4
2	N	Warren	Dawn	North	4
2	N	Warren	Dawn	SE	4

2	N	Scarlet Sky Dr.	K St.	SE	4
2	N	Scarlet Sky Dr.	K St.	NE	4
2	N	Scarlet Sky Dr.	K St.	West	4
2	N	Scarlet Sky Dr.	Moonlight Ct.	SE	4
2	N	Scarlet Sky Dr.	Moonlight Ct.	NE	4
2	N	Scarlet Sky Dr.	Moonlight Ct.	West	4
2	N	K St.	Moonlight Ct.	SW	4
2	N	K St.	Moonlight Ct.	NW	4
2	N	K St.	Moonlight Ct.	East	4
2	N	K St.	Dawn	West	4
2	N	K St.	Dawn	SE	4
2	N	K St.	Dawn	SW	4
2	N	K St.	Cul-de-sac at north end	NW	4
2	N	Tieton	J Ct.	SW	3
2	N	Tieton	J Ct.	SE	3
2	N	Tieton	I Ct.	SW	3
2	N	Tieton	I Ct.	SE	3
2	N	Jay	L Ct.	SW	4
2	N	Jay	L Ct.	SE	4
2	N	Bradbury	Twilight St.	NW	4
2	N	Bradbury	Twilight St.	NE	4
2	N	Bradbury	Dusk Ct.	NW	4
2	N	Bradbury	Dusk Ct.	NE	4
2	N	Dawn	Dawn Ct.	NW	4
2	N	Dawn	Dawn Ct.	NE	4
2	N	Dawn	Dawn Ct.	South	4
2	N	Dawn	Evening Ct.	NW	4
2	N	Dawn	Evening Ct.	NE	4
2	N	Dawn	Evening Ct.	South	4
2	N	Dorset	Tieton	SW	3
2	N	Dorset	Tieton	SE	4
2	N	Dorset	Jay	SW	4
2	N	Dorset	Jay	SE	4
2	N	Dorset	Bradbury	SW	4
2	N	Dorset	Bradbury	SE	4
2	N	Dorset	Dawn	SW	4
2	N	Dorset	Dawn	SE	4
2	N	Dorset	Prairie Breeze	SE	4
2	N	Dorset	Prairie Breeze	NE	4
2	N	Prairie Breeze	Prescott	SW	4
2	N	Prairie Breeze	Prescott	NW	4
2	N	Prairie Breeze	Prescott	NE	4
2	N	Prairie Breeze	Prescott	SE	4
2	N	Prairie Breeze	Mallory	SW	4
2	N	Prairie Breeze	Mallory	NW	4

2	N	Prairie Breeze	Mallory	NE	4
2	N	Prairie Breeze	Mallory	SE	4
2	N	Prairie Breeze	Westwind	NW	4
2	N	Prairie Breeze	Westwind	NE	4
2	N	Prairie Breeze	Claire	SW	4
2	N	Prairie Breeze	Claire	NW	4
2	N	Prairie Breeze	Claire	NE	4
2	N	Prairie Breeze	Claire	SE	4
2	N	Hawthorne	W. of Prescott	SW	3
2	N	Hawthorne	Westover Ln.	SW	3
2	N	Hawthorne	Westover Ln.	SE	3
2	N	Johannsen	West School Driveway	NW	4
2	N	Johannsen	West School Driveway	NE	4
2	N	Johannsen	East School Driveway	NW	4
2	N	Johannsen	East School Driveway	NE	4
2	N	Johannsen	Edna/Oak	SW	1
2	N	Johannsen	Edna/Oak	SE	1
2	N	Johannsen	Northview Ln	NW	5
2	N	Johannsen	Orchard Rd	NW	5
2	N	Johannsen	Orchard Rd	NE	5
2	N	Johannsen	Orchard Rd	SW	5
2	N	Johannsen	Snyder	NW	5
2	N	Johannsen	Snyder	NE	5
2	N	Orchard	Westover Ln.	SE	3
2	N	Orchard	Westover Ln.	NE	3
2	N	Graves	Rodgers	NW	3
2	N	Graves	Rodgers	NE	3
2	N	Graves	Rodgers	SE	3
2	N	Graves	Rodgers	SW	3
2	N	Graves	Jesse Ct.	NW	3
2	N	Graves	Jesse Ct.	SW	3
2	N	Graves	Alberta Ct.	NW	4
2	N	Graves	Alberta Ct.	NE	4
2	N	Graves	Alberta Ct.	SE	4
2	N	Graves	Alberta Ct.	SW	4
2	N	Cochran	Juliann Ct.	SW	4
2	N	Cochran	Juliann Ct.	SW	4
2	N	Westover	Lindeke Rd.	NW	3
2	N	Westover	Lindeke Rd.	NE	3
2	N	Westover	Lindeke Ct.	SW	4
2	N	Westover	Lindeke Ct.	SE	4
2	N	Hawthorne	Loma Dr.	NW	3
2	N	Hawthorne	Loma Dr.	NE	3
2	N	Hawthorne	Loma Dr.	SE	3
2	N	Hawthorne	Loma Dr.	SW	3

2	N	Hawthorne	Lindeke Rd.	SW	3
2	N	Hawthorne	Lindeke Rd.	SE	3
2	N	Hawthorne	Milton Ct.	SW	3
2	N	Hawthorne	Milton Ct.	SE	3
2	N	Hawthorne	Westover	SW	3
2	N	Hawthorne	Westover	SE	3
2	N	Hawthorne	Alberta	NW	3
2	N	Hawthorne	Alberta	NE	3
2	N	Hawthorne	Cochran	SW	3
2	N	Hawthorne	Cochran	SE	3
2	N	Alberta	Jared Ct.	NW	3
2	N	Alberta	Jared Ct.	NE	3
2	N	Alberta	Jared Ct.	SE	3
2	N	Alberta	Jared Ct.	SW	3
2	N	Alberta	Howesdale	NW	3
2	N	Alberta	Howesdale	NE	3
2	N	Alberta	Howesdale	SE	3
2	N	Alberta	Howesdale	SW	3
2	N	Regina	Lloyd Charles Ln.	SE	3
2	N	Regina	Lloyd Charles Ln.	SW	3
2	N	Fairwood Dr.	South of Bellwood	South	3
2	N	Fairwood Dr.	Bellwood	NW	1
2	N	Fairwood Dr.	Bellwood	NE	1
2	N	Fairwood Dr.	Cul-de-sac east	SE	1
2	N	Fairwood Dr.	Cul-de-sac east	NE	1
2	N	Fairwood Dr.	Cul-de-sac west	SW	1
2	N	Fairwood Dr.	Cul-de-sac west	NW	1
2	N	Fairwood Dr.	Cul-de-sac west	SW	1
2	N	Fairwood Dr.	Cul-de-sac west	NW	1
2	N	Fairwood Dr.	Parkwood Ct.	SW	1
2	N	Fairwood Dr.	Parkwood Ct.	NW	1
2	N	Fairwood Dr.	Vistawood Ct.	NE	1
2	N	Fairwood Dr.	Vistawood Ct.	SE	1
2	N	Fairwood Dr.	Vistawood Ct.	SW	1
2	N	Fairwood Dr.	Crestwood/Valewood	NW	1
2	N	Fairwood Dr.	Crestwood/Valewood	NE	1
2	N	Fairwood Dr.	Crestwood/Valewood	SE	1
2	N	Fairwood Dr.	Crestwood/Valewood	SW	1
2	N	Fairwood Dr.	Cliffwood Ct.	NW	1
2	N	Fairwood Dr.	Cliffwood Ct.	NE	1
2	N	Fairwood Dr.	Cliffwood Ct.	SE	1
2	N	Fairwood Dr.	Cliffwood Ct.	SW	1
2	N	Fairwood Dr.	Cherrywood Ct.	NW	1
2	N	Fairwood Dr.	Cherrywood Ct.	NE	1
2	N	Fairwood Dr.	Cherrywood Ct.	SE	1

2	N	Fairwood Dr.	Cherrywood Ct.	SW	1
2	N	Fairwood Dr.	Elmwood Ct.	NW	1
2	N	Fairwood Dr.	Elmwood Ct.	NE	1
2	N	Fairwood Dr.	Elmwood Ct.	SE	1
2	N	Fairwood Dr.	Elmwood Ct.	SW	1
2	N	Fairwood Dr.	Candlewood Ct.	SW	1
2	N	Fairwood Dr.	Candlewood Ct.	SE	1
2	N	Fairwood Dr.	Fairwood Dr. Corner	NW	1
2	N	Fairwood Dr.	Fairwood Dr. Corner	NE	1
2	N	Fairwood Dr.	Fairwood Dr. Corner	South	1
2	N	Rosewood	Madison	NE	5
2	N	Rosewood	Madison	SE	4
2	N	Argonaut	Lynwood	SW	1
2	N	Holyoak	Lincoln	NW	5
2	N	Holyoak	Lincoln	NE	5
2	N	Holyoak	Post	NW	5
2	N	Holyoak	Post	NE	5
2	N	Wedgewood	Lincoln	SW	5
2	N	Wedgewood	Lincoln	SE	5
2	N	Wedgewood	Lincoln	North	5
2	N	Wedgewood	Post (north)	NW	5
2	N	Wedgewood	Post (north)	NE	5
2	N	Wedgewood	Post (north)	South	5
2	N	Wedgewood	Post (south)	SW	5
2	N	Wedgewood	Post (south)	SE	5
2	N	Wedgewood	Post (south)	North	5
2	N	Weile	In front of School	North	2
2	N	Weile	Post	North	5
2	N	Weile	Post	SW	5
2	N	Weile	Post	SE	5
2	N	Houston	Howard	NW	5
2	N	Houston	Howard	NE	5
2	N	Houston	Howard	SE	5
2	N	Houston	Howard	SW	5
2	N	Houston	Alley east of Howard	NW	1
2	N	Houston	Alley east of Howard	NE	1
2	N	Houston	Alley east of Howard	SE	2
2	N	Houston	Alley east of Howard	SW	1
2	N	Houston	Stevens	NW	5
2	N	Houston	Stevens	NE	5
2	N	Houston	Stevens	SE	2
2	N	Houston	Stevens	SW	5
2	N	Houston	Alley east of Stevens	NW	4
2	N	Houston	Alley east of Stevens	SW	4
2	N	Wedgewood	Alley east of Wall	NW	1

2	N	Wedgewood	Alley east of Wall	NE	1
2	N	Wedgewood	Alley east of Wall	SE	1
2	N	Wedgewood	Alley east of Wall	SW	1
2	N	Wedgewood	Howard	NW	5
2	N	Wedgewood	Howard	NE	5
2	N	Wedgewood	Howard	SE	5
2	N	Wedgewood	Howard	SW	5
2	N	Wedgewood	Alley east of Howard	NW	2
2	N	Wedgewood	Alley east of Howard	NE	2
2	N	Wedgewood	Alley east of Howard	SE	2
2	N	Wedgewood	Alley east of Howard	SW	2
2	N	Wedgewood	Stevens	NW	5
2	N	Wedgewood	Stevens	NE	5
2	N	Wedgewood	Stevens	SE	5
2	N	Wedgewood	Stevens	SW	5
2	N	Wedgewood	Alley east of Stevens	NW	2
2	N	Wedgewood	Alley east of Stevens	NE	2
2	N	Wedgewood	Alley east of Stevens	SE	2
2	N	Wedgewood	Alley east of Stevens	SW	2
2	N	Wedgewood	Washington	NW	5
2	N	Wedgewood	Washington	NE	5
2	N	Wedgewood	Washington	SE	5
2	N	Wedgewood	Washington	SW	5
2	N	Wedgewood	Alley east of Washington	NW	2
2	N	Wedgewood	Alley east of Washington	NE	2
2	N	Wedgewood	Alley east of Washington	SE	2
2	N	Wedgewood	Alley east of Washington	SW	2
2	N	Wedgewood	Whitehouse	NW	5
2	N	Wedgewood	Whitehouse	NE	5
2	N	Wedgewood	Whitehouse	SE	5
2	N	Wedgewood	Whitehouse	SW	5
2	N	Wedgewood	Alley east of Whitehouse	NW	4
2	N	Wedgewood	Alley east of Whitehouse	SW	4
2	N	Shasta Way	Howard	SW	1
2	N	Whitehouse	Maxine	SW	1
2	N	Whitehouse	Maxine	East	1
2	N	Wall	Falcon (west)	NW	2
2	N	Wall	Falcon (east)	NE	2
2	N	Wall	Teal	West	1
2	N	Wall	Teal	NE	2
2	N	Wall	Teal	SE	2
2	N	Wall	Rolland	West	2
2	N	Wall	Rolland	NE	1
2	N	Wall	Rolland	SE	1
2	N	Wall	Woodway	SW	1

2	N	Wall	Woodway	NW	1
2	N	Wall	Woodway	East	1
2	N	Wall	Elwood Ct.	NE	1
2	N	Wall	Elwood Ct.	SE	1
2	N	Wall	Elwood Dr.	SW	1
2	N	Wall	Elwood Dr.	NW	1
2	N	Wall	Elwood Dr.	East	1
2	N	Whitehouse	Elcliff	NE	2
2	N	Whitehouse	Falcon	SW	2
2	N	Whitehouse	Falcon	NW	2
2	N	Whitehouse	Falcon	NE	2
2	N	Whitehouse	Falcon	SE	2
2	N	Whitehouse	Rolland	NE	2
2	N	Whitehouse	Rolland	SE	2
2	N	Whitehouse	Woodway	NE	2
2	N	Whitehouse	Woodway	SE	2
2	N	Falcon	Calispel Ct.	SW	2
2	N	Falcon	Calispel Ct.	SE	2
2	N	Falcon	Calispel Ct.	North	1
2	N	Falcon	Rolland	NW	2
2	N	Falcon	Rolland	NE	2
2	N	Falcon	Rolland	SE	2
2	N	Falcon	Rolland	SW	2
2	N	Falcon	Normandie	NW	2
2	N	Falcon	Normandie	NE	2
2	N	Falcon	Normandie	SE	2
2	N	Falcon	Normandie	SW	2
2	N	Falcon	Atlantic	NW	2
2	N	Falcon	Atlantic	NE	2
2	N	Falcon	Atlantic	South	1
2	N	Falcon	East of Atlantic, Cul-de-sac	NW	2
2	N	Falcon	East of Atlantic, Cul-de-sac	NE	1
2	N	Falcon	East of Atlantic, Cul-de-sac	SE	1
2	N	Falcon	East of Atlantic, Cul-de-sac	SW	2
2	N	Falcon	Mayfair	SW	2
2	N	Falcon	Mayfair	SE	2
2	N	Falcon	Mayfair	North	1
2	N	Elcliff	East of Normandie	North	1
2	N	Elcliff	East of Normandie	South	1
2	N	Wall	Wall Ct.	SE	1
2	N	Wall	Wall Ct.	NE	1
2	N	Wall	Wall Ct.	West	1
2	N	Wall	Alderwood	SE	1
2	N	Wall	Alderwood	NE	1
2	N	Wall	Alderwood	West	1

2	N	Wall	Bellwood	SW	4
2	N	Wall	Bellwood	SE	4
2	N	Wall	Bellwood	North	1
2	N	Mayfair	South STA Driveway	South	3
2	N	Mayfair	North STA Driveway	North	2
2	N	Ruby	Driveway N. of Hastings	SE	3
2	N	Ruby	Driveway N. of Hastings	NE	3
2	N	Farwell	Addison/Comm. Driveway	NE	1
2	N	Farwell	Addison/Comm. Driveway	SE	1
2	N	Addison	Center Ln.	SW	4
2	N	Addison	Center Ln.	NW	4
2	N	Addison	Center Ln.	East	1
2	N	Wall St	Teal Ave	NE	2
2	N	Wall St	Teal ave	SE	2
2	N	Addison	Travis Ct.	SE	4
2	N	Addison	Travis Ct.	NE	4
2	N	Addison	Alexa Ct.	SE	4
2	N	Addison	Alexa Ct.	NE	4
2	N	Addison	Marrissa Ct.	SE	4
2	N	Addison	Marrissa Ct.	NE	4
2	N	Addison	Sapphire Ln.	SW	4
2	N	Addison	Sapphire Ln.	NW	4
2	N	Addison	Sapphire Ln.	NE	4
2	N	Addison	Sapphire Ln.	SE	4
2	N	Addison	Mayfair Ln.	SW	4
2	N	Addison	Mayfair Ln.	NW	4
2	N	Addison	Mayfair Ln.	NE	4
2	N	Addison	Mayfair Ln.	SE	4

No curb ramps in this area.

3					
4	Y	Hastings	Standard Dr.	SW	4
4	Y	Hastings	Standard Dr.	SE	4
4	Y	Hastings	Dakota	NW	3
4	Y	Hastings	Dakota	NE	3
4	Y	Hastings	Dakota	SE	4
4	Y	Hastings	Dakota	SW	4
4	Y	Hastings	Hamilton	NW	3
4	Y	Hastings	Hamilton	NE	3
4	Y	Hastings	Guinevere Dr.	SW	3
4	Y	Hastings	Guinevere Dr.	SE	3
4	Y	Hastings	Denver	SW	3
4	Y	Hastings	Denver	SE	3
4	Y	Hastings	Perry	NW	3

4	Y	Hastings	Perry	NE	3
4	Y	Hastings	Perry	SE	3
4	Y	Hastings	Perry	SW	3
4	Y	Hastings	Pittsburg	NW	5
4	Y	Hastings	Pittsburg	NE	5
4	Y	Hastings	Pittsburg	SE	5
4	Y	Hastings	Pittsburg	SW	5
4	Y	Farwell	Wilson/Oak	NW	5
4	Y	Farwell	Wilson/Oak	NE	5
4	Y	Farwell	Wilson/Oak	SE	5
4	Y	Farwell	Wilson/Oak	SW	5
4	Y	Farwell	Meadowlark St.	North	5
4	Y	Farwell	Meadowlark St.	SE	5
4	Y	Farwell	Meadowlark St.	SW	5
4	Y	Farwell	Sheridan St. (South)	North	5
4	Y	Farwell	Sheridan St. (South)	SE	5
4	Y	Farwell	Sheridan St. (South)	SW	5
4	Y	Farwell	Sheridan St. (North)	South	5
4	Y	Farwell	Sheridan St. (North)	NW	5
4	Y	Farwell	Sheridan St. (North)	NE	5
4	Y	Farwell	Freya	NW	5
4	Y	Farwell	Freya	NE	5
4	Y	Farwell	Freya	SE	5
4	Y	Farwell	Freya	SW	5
4	Y	Market	Houston	SW	3
4	Y	Market	Houston	NW	3
4	Y	Market	Wilding	SW	3
4	Y	Market	Wilding	NW	3
4	Y	Market	Lincoln	SW	3
4	Y	Market	Lincoln	NW	3
4	Y	Market	Freya/Magnesium	SW	4
4	Y	Market	Freya/Magnesium	NW	4
4	Y	Market	Freya/Magnesium	NE	4
4	Y	Market	Freya/Magnesium	SE	4
4	Y	Market	First Ave	NW	3
4	Y	Market	Second Ave.	SW	3
4	Y	Market	Second Ave.	NW	3
4	Y	Market	Third Ave.	SW	3
4	Y	Market	Third Ave.	NW	3
4	Y	Market	Third Ave.	NE	3
4	Y	Market	Fourth Ave.	SW	3
4	Y	Market	Fourth Ave.	NW	3
4	Y	Market	Fourth Ave.	NE	3
4	Y	Market	Fourth Ave.	SE	3
4	Y	Market	Farwell	SW	5

4	Y	Market	Farwell	NW	5
4	Y	Market	Farwell	NE	5
4	Y	Market	Farwell	SE	5
4	Y	Magnesium	Regal	NW	4
4	Y	Magnesium	Regal	NE	4
4	Y	Magnesium	Regal	SE	4
4	Y	Hawthorne	Middleton	NW	2
4	Y	Hawthorne	Middleton	NE	2
4	Y	Hawthorne	Colfax	SW	4
4	Y	Hawthorne	Colfax	SE	4
4	Y	Hawthorne	Colfax	North	4
4	Y	Hawthorne	Mayberry	NW	4
4	Y	Hawthorne	Mayberry	NE	4
4	Y	Hawthorne	Whittier	SW	3
4	Y	Hawthorne	Whittier	SE	3
4	Y	Hawthorne	Hooper	NW	2
4	Y	Hawthorne	Hooper	NE	2
4	Y	Hawthorne	Andrew	SW	2
4	Y	Hawthorne	Andrew	SE	3
4	N	Colfax	Graves	NW	1
4	N	Colfax	Graves	NE	3
4	N	Middleton	Humbolt	SW	2
4	N	Middleton	Humbolt	SE	1.5
4	N	Middleton	Nelson	East	2
4	N	Elcliff	Whitworth Dt.	SE	4
4	N	Elcliff	Astor	South	4
4	N	Elcliff	Cul-de-sac east of Astor	South	4
4	N	Guinevere	Percival	NW	3
4	N	Guinevere	Chatham	SW	3
4	N	Guinevere	Chatham	NW	3
4	N	Guinevere	Chatham	East	1
4	N	Guinevere	Harding Dr.	SW	3
4	N	Guinevere	Harding Dr.	NW	3
4	N	Guinevere	Metler	SW	3
4	N	Guinevere	Metler	NW	3
4	N	Guinevere	Metler	East	1
4	N	Guinevere	Brierwood Ct.	SW	3
4	N	Guinevere	Brierwood Ct.	NW	3
4	N	Guinevere	Brierwood Dr.	SE	3
4	N	Guinevere	Brierwood Dr.	NE	3
4	N	Guinevere	Brierwood Dr.	West	1
4	N	Guinevere	Chantel Dr.	SE	3
4	N	Guinevere	Chantel Dr.	NE	3
4	N	Guinevere	Chantel Dr.	West	1
4	N	Nevada Ct.	South Cul-de-sac	SW	3

4	N	Nevada Ct.	Metler	NW	3
4	N	Nevada Ct.	Metler	NE	3
4	N	Nevada Ct.	North Cul-de-sac	SW	2
4	N	Perry	Mead (West)	SW	2
4	N	Perry	Mead (West)	NW	2
4	N	Perry	Mead (West)	East	1
4	N	Perry	Mead (East)	SW	3
4	N	Perry	Mead (East)	NW	3
5	Y	Market	Commercial Dr. S. of SR 206	SW	1
5	Y	Market	Commercial Dr. S. of SR 206	NW	1
5	Y	Market	Commercial Dr. S. of SR 206	NE	3
5	Y	Market	Commercial Dr. S. of SR 206	SE	3
5	Y	Shady Slope	Garden	SE	4
5	Y	Shady Slope	Garden	NE	4
5	Y	Shady Slope	Garden	West	1
5	Y	Shady Slope	Wilson	SE	4
5	Y	Wandermere	South of Hatch	East	3
5	Y	Wandermere	Hatch	SE	4
5	Y	Hatch	Wellington Dr.	SE	4
5	Y	Hatch	Wellington Dr.	NE	4
5	Y	Hatch	Midway (East)	SE	4
5	Y	Hatch	Midway (west)	SW	3
5	Y	Hatch	Midway (west)	NW	3
5	Y	Hatch	Wellington Ln.	SE	4
5	Y	Hatch	Wellington Ln.	NE	4
5	Y	Hatch	Golden Eagle/Bonnie Lynn	SW	4
5	Y	Hatch	Golden Eagle/Bonnie Lynn	NW	4
5	Y	Hatch	Golden Eagle/Bonnie Lynn	NE	4
5	Y	Hatch	Golden Eagle/Bonnie Lynn	SE	4
5	Y	Hatch	Silver Pines	SE	4
5	Y	Hatch	Silver Pines	NE	4
5	Y	Hatch	Upper Terrace Ln.	SE	4
5	Y	Hatch	Upper Terrace Ln.	NE	4
5	Y	Hatch	Ballard	SW	3
5	Y	Hatch	Ballard	NW	3
5	Y	Hatch	Ballard	NE	4
5	Y	Hatch	Ballard	SE	4
5	Y	Hatch	Bridle Trail	NE	4
5	Y	Hatch	Bridle Trail	SE	4
5	Y	Hatch	Handy	SW	3
5	Y	Hatch	Handy	NW	3
5	Y	Hatch	Handy	East	3
5	Y	Hatch	Entrance to Swim Park	SE	4
5	Y	Hatch	Entrance to Swim Park	NE	4
5	Y	Hatch	Parker Dr.	SW	4

5	Y	Hatch	Parker Dr.	NW	4
5	Y	Hatch	Parker Dr.	NE	4
5	Y	Hatch	Colbert	SE	4
5	Y	Hatch	Colbert	NE	4
5	Y	Midway	West School Driveway	NW	3
5	Y	Midway	West School Driveway	NE	3
5	Y	Midway	School Dr. W. of Hamilton	NW	3
5	Y	Midway	School Dr. W. of Hamilton	NE	3
5	Y	Midway	Hamilton/School Driveway	NW	3
5	Y	Midway	Hamilton/School Driveway	NE	3
5	Y	Midway	Hamilton/School Driveway	SE	2
5	Y	Midway	Hamilton/School Driveway	SW	2
5	Y	Midway	School Dr. E. of Hamilton	NW	4
5	Y	Midway	School Dr. E. of Hamilton	NE	4
5	Y	Midway	School Dr. E. of Hamilton	NE	1
5	Y	Midway	School Dr. E. of Hamilton	South	4
5	Y	Midway	Wellington Dr. E. of School	SW	3
5	Y	Midway	Wellington Dr. E. of School	SE	3
5	Y	Midway	Morton Dr.	SW	3
5	Y	Midway	Morton Dr.	SE	3
5	Y	Midway	Columbus	SW	4
5	Y	Midway	Columbus	SE	4
5	N	Perry	Carlson Ct.	SW	4
5	N	Perry	Carlson Ct.	NW	4
5	N	Perry	Cleveland Bay Ln.	SE	4
5	N	Perry	Cleveland Bay Ln.	NE	4
5	N	Perry	Center	SE	4
5	N	Perry	Center	NE	4
5	N	Perry	South of NSC Bridge	East	1
5	N	Perry	South of NSC Bridge	West	1
5	N	Perry	North of NSC Bridge	West	1
5	N	Pittsburg	South School Driveway	NE	3
5	N	Pittsburg	North School Driveway	SE	2
5	N	Pittsburg	North School Driveway	NE	2
5	N	Pittsburg	Center	SW	2
5	N	Pittsburg	Center	SE	3
5	N	Crestline	Carlson Ct.	NE	5
5	N	Crestline	Children of the Sun Trail	NE	5
5	N	Crestline	School Driveway	NW	5
5	N	Center	Near NSC	South	4
5	N	Greenleaf	Cincinnati	NE	2
5	N	Greenleaf	Brooklawn Dr.	SE	2
5	N	Greenleaf	Brooklawn Dr.	NE	2
5	N	Greenleaf	Park Entrance	SW	5
5	N	Greenleaf	Park Entrance	NW	5

5	Y	Little Spokane Dr.	Greenleaf	SW	2
5	Y	Little Spokane Dr.	Greenleaf	SE	2
5	N	Blackhawk Dr.	Gleneden Dr.	SW	3
5	N	Blackhawk Dr.	Gleneden Dr.	NW	3
5	N	Blackhawk Dr.	Gleneden Dr.	NE	3
5	N	Blackhawk Dr.	Gleneden Dr.	SE	3
5	N	Blackhawk Dr.	Franklin	NW	3
5	N	Blackhawk Dr.	Franklin	NE	3
5	N	Blackhawk Dr.	Edencrest Dr.	NW	3
5	N	Blackhawk Dr.	Edencrest Dr.	NE	3
5	N	Blackhawk Dr.	Edencrest Dr.	SE	3
5	N	Blackhawk Dr.	Edencrest Dr.	SW	3
5	N	Blackhawk Dr.	Timberwood Ct.	NW	3
5	N	Blackhawk Dr.	Timberwood Ct.	NE	3
5	N	Blackhawk Dr.	Pineview	NW	3
5	N	Blackhawk Dr.	Pineview	NE	3
5	N	Blackhawk Dr.	Woodcrest Ct.	NW	3
5	N	Blackhawk Dr.	Woodcrest Ct.	NE	3
5	N	Blackhawk Dr.	Heatherglen Ct.	NW	3
5	N	Blackhawk Dr.	Heatherglen Ct.	NE	3
5	N	Blackhawk Dr.	Glencrest Dr.	NW	3
5	N	Blackhawk Dr.	Glencrest Dr.	SW	3
5	N	Golden	Edencrest Dr.	NE	3
5	N	Golden	Edencrest Dr.	SE	3
5	N	Golden	Erica Ct.	SW	3
5	N	Golden	Erica Ct.	SE	3
5	N	Golden	Hamilton	NW	3
5	N	Golden	Hamilton	South	1
5	N	Golden	Pineview	SW	3
5	N	Golden	Pineview	SE	3
5	N	Golden	Cul-de-sac East End	South	3
5	N	Gleneden	Franklin	SE	3
5	N	Gleneden	Franklin	SW	3
5	N	Gleneden	Edencrest Dr.	SE	3
5	N	Gleneden	Edencrest Dr.	SW	3
5	N	Gleneden	Cincinnati Ct.	SE	3
5	N	Gleneden	Cincinnati Ct.	SW	3
5	N	Huron	Hamilton	SE	3
5	N	Huron	Hamilton	SW	3
5	N	Huron	Columbus Dr.	South	3
5	N	Huron	Columbus Dr.	NW	3
5	N	Huron	Columbus Dr.	NE	3
5	N	Glencrest Dr.	Heron Ct.	NE	3
5	N	Glencrest Dr.	Heron Ct.	SE	3
5	N	Glencrest Dr.	Heron Ct.	SW	3

5	N	Glencrest Dr.	Heron Ct.	NW	3
5	N	Glencrest Dr.	Stub N. of Blackhawk Dr.	NE	3
5	N	Glencrest Dr.	Stub N. of Blackhawk Dr.	SE	3
5	N	Columbus Dr.	Country Hill Ct.	East	1
5	N	Columbus Dr.	Country Hill Ct.	SW	3
5	N	Columbus Dr.	Country Hill Ct.	NW	3
5	N	Columbus Dr.	Barley Brae	SW	3
5	N	Columbus Dr.	Barley Brae	SE	3
5	N	Columbus Dr.	Granary Ct.	SW	4
5	N	Columbus Dr.	Granary Ct.	SE	4
5	N	Columbus Dr.	Carriage Ct.	SE	4
5	N	Columbus Dr.	Carriage Ct.	NE	4
5	N	Barley Brae	Woodcrest Ct.	SE	3
5	N	Barley Brae	Woodcrest Ct.	NE	3
5	N	Woodcrest Ct.	Cul-de-sac S. of Barley Brae	West	1
5	N	Barley Brae	Cul-de-sac E. of Woodcrest	South	1
5	N	Country Hill Ct.	Cul-de-sac W. of Morton Dr.	North	1
5	N	Morton Dr.	Country Hill Ct.	NE	3
5	N	Morton Dr.	Country Hill Ct.	NW	3
5	N	Morton Dr.	Tudor Ct.	SW	3
5	N	Morton Dr.	Tudor Ct.	SE	3
5	N	Tudor Ct.	Cul-de-sac E. of Nevada	West	1
5	N	Nevada	Tudor Ct.	NW	2
5	N	Nevada	Tudor Ct.	NE	2
5	N	Wellington Dr.	Dakota	NW	3
5	N	Wellington Dr.	Dakota	NE	3
5	N	Wellington Dr.	Cincinnati	NW	3
5	N	Wellington Dr.	Cincinnati	NE	3
5	N	Wellington Dr.	Hamilton	NW	2
5	N	Wellington Dr.	Hamilton	NE	2
5	N	Wellington Dr.	Nevada	NW	2
5	N	Wellington Dr.	Nevada	NE	2
5	N	Wellington Dr.	Cul-de-sac S. of Midway	NW	3
5	N	Wellington Dr.	Cul-de-sac S. of Midway	NE	3
5	N	Midway	Piperglen Ct.	NW	2
5	N	Midway	Piperglen Ct.	NE	2
5	N	Piperglen Ct.	Franklin Ln.	South	1
5	N	Piperglen Ct.	Franklin Ln.	NE	2
5	N	Mayfair Dr.	Scots Glen Ct.	West	1
5	N	Mayfair Dr.	Scots Glen Ct.	NE	2
5	N	Mayfair Dr.	Scots Glen Ct.	SE	2
5	N	Mayfair Dr.	End of SW south of Cooper	West	1
5	N	Mayfair Dr.	Cooper Ln.	NE	2
5	N	Mayfair Dr.	Cooper Ln.	SE	2
5	N	Mayfair Dr.	End of SW north of Cooper	East	1

5	N	Cooper Ln.	Woodcrest Ct.	NE	2
5	N	Cooper Ln.	Woodcrest Ct.	South	2
5	N	Cooper Ln.	Franklin Ln.	NE	3
5	N	Cooper Ln.	Franklin Ln.	South	3
5	N	Silver Pines	Dakota	NW	4
5	N	Silver Pines	Dakota	NE	4
5	N	Silver Pines	Dakota	SE	4
5	N	Silver Pines	Dakota	SW	4
5	N	Silver Pines	Cooper Ln.	NE	4
5	N	Silver Pines	Cooper Ln.	SE	4
5	N	Silver Pines	Cooper Ln.	SW	4
5	N	Ballard	Astor	SE	2
5	N	Ballard	Astor	SW	2
5	N	Ballard	Lidgerwood	NE	3
5	N	Ballard	Lidgerwood	NW	3
5	N	Ballard	Colton	SE	3
5	N	Ballard	Colton	SW	3
5	N	Ballard	End of SW west of Colton	North	3
5	N	Ballard	End of SW west of Colton	South	3
5	N	Trevor	Colfax	NE	3
5	N	Trevor	Colfax	SE	3
5	N	Trevor	Colton	SW	3
5	N	Trevor	Colton	SE	3
5	N	Trevor	Colton	North	3
5	N	Trevor	Lidgerwood	NW	3
5	N	Trevor	Lidgerwood	NE	3
5	N	Trevor	Astor Ct.	NW	3
5	N	Trevor	Astor Ct.	NE	3
5	N	Trevor	Addison	North	3
5	N	Trevor	Addison	SE	3
5	N	Handy	Franklin	SE	3
5	N	Handy	Franklin	SW	3
5	N	Handy	Trail Ct.	SE	3
5	N	Handy	Trail Ct.	SW	3
5	N	Handy	Trail Ct.	North	1
5	N	Handy	Addison (North)	NE	3
5	N	Handy	Addison (North)	NW	3
5	N	Handy	Addison (North)	South	1
5	N	Handy	Addison (South)	SE	3
5	N	Handy	Addison (South)	SW	3
5	N	Handy	Addison (South)	North	1
5	N	Handy	Astor	NE	3
5	N	Handy	Astor	NW	3
5	N	Handy	Lidgerwood	SE	3
5	N	Handy	Lidgerwood	SW	3

5	N	Handy	Lidgerwood	NW	3
5	N	Handy	Lidgerwood	NE	3
5	N	Handy	Colton (South)	SE	3
5	N	Handy	Colton (South)	SW	3
5	N	Handy	Colton (South)	North	1
5	N	Handy	Colton (North)	NE	3
5	N	Handy	Colton (North)	NW	3
5	N	Handy	Colfax	SE	3
5	N	Handy	Colfax	SW	3
5	N	Handy	Division	NE	3
5	N	Handy	Division	SE	3
5	N	Colton Ct.	End of SW South of Handy	East	2
5	N	Addition Ct.	End of SW South of Handy	East	3
5	N	Trail Ct.	End of SW South of Handy	East	3
5	N	Franklin Ct.	End of SW South of Handy	East	3
5	N	Astor	Leland Ct.	SW	4
5	N	Astor	Leland Ct.	NW	4
5	N	Astor	Leland Ct.	East	1
5	N	Leland Ct.	West of Astor	North	4
5	N	Astor	Parker Dr.	SW	4
5	N	Astor	Parker Dr.	NW	4
5	N	Astor	Parker Dr.	NE	4
5	N	Astor	Parker Dr.	NW	4
5	N	Parker Ct.	West of Astor	North	4
5	N	Astor Ct.	East of Parker	North	4
5	N	Astor Ct.	East of Parker	North	4
5	N	Lidgerwood Ct.	North of Handy	East	3
5	N	Colton St.	Lidgerwood Ct.	West	4
5	N	Colton St.	Lidgerwood Ct.	NE	4
5	N	Colton St.	Lidgerwood Ct.	SE	4
5	N	Lidgerwood Ct.	North of Colton St.	South	4
5	N	Lidgerwood Ct.	North of Colton St.	North	4
5	N	Lidgerwood Ct.	End - North of Colton St.	West	4
5	N	Lidgerwood Ct.	End - North of Colton St.	East	4
5	N	Colton St.	Colfax Ct.	South	1
5	N	Colton St.	Colfax Ct.	NW	4
5	N	Colton St.	Colfax Ct.	NE	4
5	N	Colfax Ct.	End - North of Colton St.	West	4
5	N	Colfax Ct.	End - North of Colton St.	East	4
5	N	Colton St.	Hillcrest Dt.	SE	4
5	N	Colton St.	Hillcrest Dt.	SW	4
5	N	Colton St.	Hillcrest Dt.	NW	4
5	N	Colton St.	Hillcrest Dt.	NE	4
5	N	Hillcrest Ct.	North of Colton St.	West	4
5	N	Hillcrest Ct.	North of Colton St.	East	4

5	N	Colton Ct.	West of Hillcrest	North	4
5	N	Colton Ct.	West of Hillcrest	South	4
5	N	Hillcrest	Division	NE	4
5	N	Hillcrest	Division	SE	4
5	N	Ballard	Edgecrest	SW	3
5	N	Ballard	Edgecrest	SE	3
5	N	Ballard	Westcrest	South	3
5	N	Ballard	Westcrest	NW	3
5	N	Ballard	Westcrest	NE	3
5	N	Westcrest	Horseman Dr. (East)	SW	3
5	N	Westcrest	Horseman Dr. (East)	NW	3
5	N	Westcrest	Horseman Dr. (North)	SW	3
5	N	Westcrest	Horseman Dr. (North)	SE	3
5	N	Westcrest	Edgecrest	SW	3
5	N	Westcrest	Edgecrest	SE	3
5	N	Edgecrest	Bridle Trail	SW	3
5	N	Edgecrest	Bridle Trail	NW	3
5	N	Colbert	Hamilton	NW	4
5	N	Colbert	Hamilton	NW	4
5	N	Clover Park	Pineglen	SE	4
5	N	Clover Park	Hunters Point	SW	4
5	N	Clover Park	Hunters Point	SE	4
5	N	Clover Park	Bonnett	SW	3
5	N	Clover Park	Bonnett	SE	3
5	N	Pineglen	Hunters Point	NW	4
5	N	Pineglen	Hunters Point	NE	4
5	N	Pineglen	Bonnett	NE	3
5	N	Lane Park	Lee Ln.	SE	2
5	N	Lane Park	Lee Ln.	SW	2
5	N	Lane Park	Lee Ln.	North	1
5	N	Lane Park	Chesapeake	South	1
5	N	Lane Park	Chesapeake	NE	3
5	N	Lane Park	Chesapeake	NW	3
5	N	Chesapeake	Pineglen	SW	2
5	N	Chesapeake	Pineglen	NW	2
5	N	Chesapeake	Clover Park	SW	3
5	N	Chesapeake	Clover Park	NW	3
5	N	Moody	Wilson Ct.	NW	3
5	N	Moody	Wilson Ct.	NE	3
5	N	Moody	Wilson Ct.	SE	3
5	N	Moody	Wilson Ct.	SW	3
5	N	Lane Park	Wilson Ct.	South	1
5	N	Lane Park	Wilson Ct.	NE	3
5	N	Lane Park	Wilson Ct.	NW	3
5	N	Lane Park	Chesapeake Ln. (South)	North	1

5	N	Lane Park	Chesapeake Ln. (South)	SW	2
5	N	Lane Park	Chesapeake Ln. (South)	SE	2
5	N	Moody	Ferrall	NE	2
5	N	Moody	Ferrall	SE	2
5	N	Moody	Freya	NE	2
5	N	Moody	Freya	NW	2
5	N	Moody	Freya	South	2
5	N	Moody	Sycamore	NE	2
5	N	Moody	Sycamore	NW	2
5	N	Moody	East of Sycamore	North	1
5	N	Freya	School Entr. N of Moody	SW	4
5	N	Freya	School Entr. N of Moody	NW	4
5	N	Freya	School Entr. N of Moody	East	1
5	N	Freya	2nd School Entr. N of Moody	SW	4
5	N	Freya	2nd School Entr. N of Moody	NW	3
5	N	Freya	Day Mt Spokane	SE	3
5	N	Day Mt Spokane	Sycamore	NE	3
5	N	Day Mt Spokane	Sycamore	SE	3
5	N	Day Mt Spokane	Sycamore	SW	3
5	N	Day Mt Spokane	Unicorn Ct.	SE	2
5	N	Day Mt Spokane	Unicorn Ct.	SW	2
5	N	Day Mt Spokane	Mytle	NE	2
5	N	Day Mt Spokane	Anna Ct.	SE	2
5	N	Day Mt Spokane	Anna Ct.	SW	2
5	N	Mytle	Tanager Ln.	SE	2
5	N	Mytle	Tanager Ln.	NE	2
5	N	Sycamore	Tanager Ln.	SE	2
5	N	Sycamore	Tanager Ln.	NE	2
5	N	Sycamore	Siskin Ln.	SE	4
5	N	Sycamore	Siskin Ln.	NE	4
5	N	Sycamore	Thrush Ln.	SE	4
5	N	Sycamore	Thrush Ln.	NE	4
6	Y	Freya St	Lyons Ave	NE	5
6	Y	Freya St	Lyons Ave	SE	5
6	Y	Freya St	N of SR 395	E	4
6	Y	Freya St	N of SR 395	W	5
6	Y	Freya St	Lincoln Rd	NW	5
6	Y	Freya St	Lincoln Rd	NE	5
6	Y	Freya St	Lincoln Rd	SW	5
6	Y	Freya St	Lincoln Rd	SE	5
6	Y	Freya St	Fairview Rd	NW	5
6	Y	Freya St	Fairview Rd	NE	5
6	Y	Freya St	Fairview Rd	SE	5
6	Y	Freya St	Greene Ln	NW	1

6	Y	Freya St	Greene Ln	NE	5
6	N	Lincoln St	Julia St	NW	4
6	N	Lincoln St	Julia St	SW	4
6	Y	Freya St	Gerlach RD	W	1
6	Y	Freya St	Gerlach RD	NE	3
6	Y	Freya St	Gerlach RD	SE	3
6	Y	Bigelow Gulch	Argonne	NWN	4
6	Y	Bigelow Gulch	Argonne	NWS1	4
6	Y	Bigelow Gulch	Argonne	NWS2	4
6	Y	Bigelow Gulch	Argonne	NWS3	4
6	Y	Bigelow Gulch	Argonne	NEN	4
6	Y	Bigelow Gulch	Argonne	NES	4
6	Y	Bigelow Gulch	Argonne	SES	4
6	Y	Bigelow Gulch	Argonne	SEN1	4
6	Y	Bigelow Gulch	Argonne	SEN2	4
6	Y	Bigelow Gulch	Argonne	SEN3	4
6	Y	Bigelow Gulch	Argonne	SWN	4
6	Y	Bigelow Gulch	Argonne	SWS	4
6	N	Lowe Rd	Peone Pines Dr	NW	1
6	N	Lowe Rd	Peone Pines Dr	NE	1
6	N	Lowe Rd	Greenleaf Ave	W	1
6	N	Lowe Rd	Greenleaf Ave	NE	3
6	N	Lowe Rd	Greenleaf Ave	SE	3
6	N	Lowe Rd	Nancy Ct	W	1
6	N	Lowe Rd	Nancy Ct	NE	3
6	N	Lowe Rd	Nancy Ct	SE	3
6	N	Lowe Rd	Lane Park Rd	NW	3
6	N	Lowe Rd	Lane Park Rd	NE	3
6	N	Lowe Rd	Lane Park Rd	SW	3
6	N	Lowe Rd	Lane Park Rd	SE	3
6	N	Lowe Rd	Chronicle Rd	NW	1
6	N	Lowe Rd	Chronicle Rd	E	1
6	N	Lowe Rd	Chronicle Rd	SW	1
6	N	Lowe Rd	Fairview Dr	SW	3
6	N	Lowe Rd	Fairview Dr	SE	3
6	N	Lowe Rd	Mckinnon Ct	SW	3
6	N	Lowe Rd	Mckinnon Ct	SE	3
6	N	Yale Rd	Melody Ln	NW	4
6	N	Yale Rd	Melody Ln	SW	4
6	N	Yale Rd	Pineglen Ln	NW	4
6	N	Yale Rd	Pineglen Ln	SW	4
6	N	Yale Rd	Moody Ln	NW	4
6	N	Yale Rd	Moody Ln	SW	4
6	N	Yale Rd	Beverly Ln	NW	4
6	N	Yale Rd	Beverly Ln	SW	4

6	N	Day Mt Spokane	Yale Rd	NE	3
6	Y	Day Mt Spokane	Yale Rd	SW	3
6	Y	Day Mt Spokane	Yale Rd	SE	3
6	Y	Day Mt Spokane	Cuba Ct	SW	4
6	Y	Day Mt Spokane	Cuba Ct	SE	4
6	Y	Day Mt Spokane	W of Patricia Dr School DW	NW	4
6	Y	Day Mt Spokane	W of Patricia Dr School DW	NE	4
6	Y	Day Mt Spokane	Patricia Dr	N	4
6	Y	Day Mt Spokane	Patricia Dr	SW	3
6	Y	Day Mt Spokane	Patricia Dr	SE	3
6	Y	Day Mt Spokane	E of Patricia Dr School DW	NW	4
6	Y	Day Mt Spokane	E of Patricia Dr School DW	NE	4
6	Y	Day Mt Spokane	Fairview Rd	NW	3
6	Y	Day Mt Spokane	Fairview Rd	NE	3
6	Y	Day Mt Spokane	Fairview Rd	SW	3
6	Y	Day Mt Spokane	Fairview Rd	SE	3
6	N	Fairview Dr	Brickenhead Ln	NW	3
6	N	Fairview Dr	Brickenhead Ln	NE	3
6	N	Fairview Dr	Brickenhead Ln	SW	3
6	N	Fairview Dr	Brickenhead Ln	SE	3
6	N	Fairview Dr	Dickson Ln	NW	3
6	N	Fairview Dr	Dickson Ln	NE	3
6	N	Fairview Dr	Dickson Ln	SW	3
6	N	Fairview Dr	Dickson Ln	SE	3
6	N	Fairview Dr	Whitehall Ln	NW	3
6	N	Fairview Dr	Whitehall Ln	NE	3
6	N	Fairview Dr	Whitehall Ln	SW	3
6	N	Fairview Dr	Whitehall Ln	SE	3
6	N	Greenbluff Rd	Fairview Dr	SW	3
6	N	Greenbluff Rd	Fairview Dr	SE	3
7	Y	Upriver Dr	Bessie Rd	SE	5
7	Y	Upriver Dr	Marguerite Rd	SE	3
7	Y	Upriver Dr	Argonne Rd	NW	3
7	Y	Upriver Dr	Argonne Rd	NE	3
7	Y	Upriver Dr	Argonne Rd	SW	3
7	Y	Upriver Dr	Argonne Rd	SE	3
7	Y	Argonne Rd	Longfellow Ave	NW	4
7	Y	Argonne Rd	Longfellow Ave	SW	4
7	Y	Argonne Rd	Heroy Ave	NE	4
7	Y	Argonne Rd	Heroy Ave	SE	4
7	Y	Argonne Rd	Wellesley Ave	NW	5
7	Y	Argonne Rd	Wellesley Ave	NE	5
7	Y	Argonne Rd	Wellesley Ave	NW	5
7	Y	Wellesley Ave	Hutchinson Ln	SE	4

7	Y	Argonne Rd	Maringo Dr	NW	4
7	Y	Argonne Rd	Maringo Dr	NE	4
7	Y	Argonne Rd	Maringo Dr	SW	4
7	Y	Argonne Rd	Maringo Dr	SE	4
7	Y	Argonne Rd	Lacrosse Ln	NE	4
7	Y	Argonne Rd	Lacrosse Ln	SE	4
7	Y	Upriver Dr	Farr Rd	SW	4
7	Y	Farr Rd	Rich Ln	NW	4
7	Y	Farr Rd	Rich Ln	SW	4
7	Y	Farr Rd	Rockwell Ln	NW	4
7	Y	Farr Rd	Rockwell Ln	SW	4
7	Y	Farr Rd	Whitman Ct	NE	3
7	Y	Farr Rd	Whitman Ct	SE	3
7	Y	Upriver Dr	Locusts Ct	NW	4
7	Y	Upriver Dr	Locusts Ct	NE	4
7	N	Locusts Ct	Heroy Ct	NW	4
7	N	Locusts Ct	Heroy Ct	NE	4
7	N	Locusts Ct	Heroy Ct	SW	4
7	N	Locusts Ct	Heroy Ct	SE	4
7	N	Locusts Ct	End	W	4
7	N	Locusts Ct	End	E	4
7	N	Farr Rd	Hoffman Ln	NW	4
7	N	Wellesley Ave	Willow Rd	NW	3
7	N	Wellesley Ave	Willow Rd	NE	3
7	N	Wellesley Ave	Farr Rd	NW	1
7	N	Wellesley Ave	Farr Rd	NE	1
7	N	Wellesley Ave	Lehman Rd	NW	4
7	N	Willow Rd	Princeton Rd	NE	3
7	N	Willow Rd	Princeton Rd	SE	3
7	N	Princeton Ave	Maple Ct	NW	3
7	N	Princeton Ave	Maple Ct	NE	3
7	N	Princeton Ave	Boeing Rd	NW	3
7	N	Princeton Ave	Boeing Rd	NE	3
7	N	Princeton Ave	Farr Rd	SW	3
7	N	Princeton Ave	Farr Rd	SE	3
7	N	Princeton Ave	E of Farr Rd	S1	4
7	N	Princeton Ave	E of Farr Rd	S2	4
7	N	Princeton Ave	E of Farr Rd	S3	4
7	N	Princeton Ave	E of Farr Rd	S4	4
7	N	Wabash Rd	Penn Ave	SW	4
7	N	Wabash Rd	Penn Ave	SE	4
7	N	Wabash Rd	Harvard Ct	SW	4
7	N	Wabash Rd	Harvard Ct	SE	4
7	N	Harvard Ct	End	NW	4
7	N	Harvard Ct	End	NE	4

7	N	Wabash Rd	Ivy Ct	SW	4
7	N	Wabash Rd	Ivy Ct	SE	4
7	N	Ivy Ct	End	SW	4
7	N	Ivy Ct	End	SE	4
7	N	Wabash Rd	Yale Ct	SW	4
7	N	Wabash Rd	Yale Ct	SE	4
7	N	Yale Ct	End	SW	4
7	N	Yale Ct	End	SE	4
7	N	Wabash Rd	Boeing Rd	SW	4
7	N	Wabash Rd	Boeing Rd	SE	4
7	N	Wabash Rd	Stout Ct	SW	4
7	N	Wabash Rd	Stout Ct	SE	4
7	N	Wabash Rd	Mcintosh Ct	SW	4
7	N	Wabash Rd	Mcintosh Ct	SE	4
7	N	Wabash Rd	Willow Rd	SW	4
7	N	Wabash Rd	Willow Rd	SE	4
7	N	Wabash Rd	Lehman Rd	SW	4
7	N	Willow Rd	Fraser Ct	NW	4
7	N	Willow Rd	Fraser Ct	E	4
7	N	Willow Rd	Fraser Ct	SW	4
7	N	Fraser Ct	End	NE	4
7	N	Fraser Ct	End	SE	4
7	Y	Argonne Rd	Columbia Dr	SW	3
7	Y	Columbia Dr	Vista Park Drive	NW	4
7	Y	Columbia Dr	Vista Park Drive	NE	4
7	Y	Columbia Dr	Sipple	SE	4
7	Y	Columbia Dr	Sipple	SW	4
7	Y	Columbia Dr	Vista Ct	SE	4
7	Y	Columbia Dr	Vista Ct	SW	4
7	Y	Columbia Dr	Elton Rd	SE	1
7	Y	Columbia Dr	Elton Rd	SW	1
7	Y	Columbia Dr	Mulvaney Ct	SE	1
7	Y	Columbia Dr	Mulvaney Ct	SW	1
7	Y	Columbia Dr	Columbia Ct	SE	1
7	Y	Columbia Dr	Columbia Ct	SW	1
7	Y	Columbia Dr	Emerald Ln	SE	4
7	Y	Columbia Dr	Emerald Ln	SW	4
7	Y	Columbia Dr	Canyon Ln	SE	3
7	Y	Columbia Dr	Canyon Ln	SW	3
7	Y	Columbia Dr	Shane Ln	SE	3
7	Y	Columbia Dr	Shane Ln	SW	3
7	Y	Columbia Dr	Mill Pond Ln	NW	4
7	Y	Columbia Dr	Mill Pond Ln	NE	4
7	Y	Columbia Dr	Mill Pond Ln	SW	4
7	Y	Columbia Dr	Senic Ln	NE	4

7	Y	Columbia Dr	Senic Ln	SW	4
7	Y	Columbia Dr	Senic Ln	SE	4
7	N	Vista Park Dr	Rowan Ln	NW	3
7	N	Vista Park Dr	Rowan Ln	SW	3
7	N	Vista Park Dr	Parkside Ln	NW	3
7	N	Vista Park Dr	Parkside Ln	SW	3
7	N	Vista Park Dr	Parkside Ln	NE	3
7	N	Vista Park Dr	Parkside Ln	SE	3
7	N	Vista Park Dr	Sandalwood Ln	NE	3
7	N	Vista Park Dr	Sandalwood Ln	SE	3
7	N	Vista Park Dr	Sugar Pine Ln	NW	3
7	N	Vista Park Dr	Sugar Pine Ln	NE	3
7	N	Vista Park Dr	Sugar Pine Ln	SW	3
7	N	Vista Park Dr	Sugar Pine Ln	SE	3
7	N	Vista Park Dr	Blue Fox Ln	NW	3
7	N	Vista Park Dr	Blue Fox Ln	SW	3
7	N	Vista Park Dr	Red Oak Ln	NW	3
7	N	Vista Park Dr	Red Oak Ln	NE	4
7	N	Vista Park Dr	Red Oak Ln	SW	3
7	N	Vista Park Dr	Red Oak Ln	SE	4
7	N	Vista Park Dr	Sunview Ln	NW	3
7	N	Vista Park Dr	Sunview Ln	NE	3
7	N	Vista Park Dr	Sunview Ln	SW	3
7	N	Vista Park Dr	Sunview Ln	SE	3
7	N	Vista Park Dr	Clearview Ln	NW	3
7	N	Vista Park Dr	Clearview Ln	NE	3
7	N	Vista Park Dr	Clearview Ln	SW	3
7	N	Vista Park Dr	Clearview Ln	SE	3
7	N	Vista Park Dr	North of Clearview Ln	W1	3
7	N	Vista Park Dr	North of Clearview Ln	W2	3
7	N	Vista Park Dr	North of Clearview Ln	W3	3
7	N	Vista Park Dr	North of Clearview Ln	W4	3
7	N	Vista Park Dr	Vista Ridge Ln (S)	NE	3
7	N	Vista Park Dr	Vista Ridge Ln (S)	SE	3
7	N	Vista Park Dr	Vista Ridge Ln (N)	NE	3
7	N	Vista Park Dr	Vista Ridge Ln (N)	SE	3
7	N	Vista Park Dr	Woodland Park Dr	NW	3
7	N	Vista Park Dr	Woodland Park Dr	SW	3
7	N	Vista Park Dr	Edgemont Ln	SW	3
7	N	Vista Park Dr	Edgemont Ln	SE	3
7	N	Vista Park Dr	Crestmont Ln	SW	3
7	N	Vista Park Dr	Crestmont Ln	SE	3
7	N	Vista Park Dr	Bull Pine Ln	SW	3
7	N	Vista Park Dr	Bull Pine Ln	SE	3
7	N	Vista Park Dr	N of Bull Pine Ln	SW	3

7	N	Vista Park Dr	N of Bull Pine Ln	SE	3
7	N	Jensen Rd	Vista Park Drive	NE	2
7	N	Jensen Rd	Vista Park Drive	SE	2
7	N	Jensen Rd	Sunflower Ln	NE	2
7	N	Jensen Rd	Sunflower Ln	SE	2
7	N	Jensen Rd	Sommerset Dr	NW	2
7	N	Jensen Rd	Sommerset Dr	SW	2
7	N	Jensen Rd	Sommerset Dr	E	1
7	N	Jensen Rd	Tony Ln	NW	2
7	N	Jensen Rd	Tony Ln	SW	2
7	N	Jensen Rd	Bull Pine Ln	NE	3
7	N	Jensen Rd	Bull Pine Ln	SE	3
7	N	Jensen Rd	Woodland Park Dr	NE	2
7	N	Jensen Rd	Woodland Park Dr	SE	2
7	N	Jensen Rd	Woodland Park Dr	W	1.5
7	N	Northwood Dr	Woodland Park Dr	NW	3
7	N	Northwood Dr	Woodland Park Dr	SW	3
7	N	Northwood Dr	Woodland Park Dr	E	1
7	N	Sommerset Ct	Central Ave	NW	4
7	N	Sommerset Ct	Central Ave	NE	4
7	N	Central Ave	Rose Eva Ct	SW	4
7	N	Central Ave	Rose Eva Ct	SE	4
7	N	Central Ave	Ella St	NE	4
7	N	Central Ave	Ella St	SE	4
7	N	Northwood Dr	Gunning Ave	NW	2
7	N	Gunning Dr	Ella St	NE	2
7	N	Gunning Dr	Ella St	SE	2
7	N	Gunning Dr	Woodland Ridge Ln	SE	2
8	N	Meyers	Grace Ln	NE	3
8	Y	Wellesley	Chase	NE	2
8	Y	Rowan Ave	Idaho Rd	NW	3
8	Y	Rowan Ave	Chase Rd	NW	2
8	Y	Rowan Ave	Chase Rd	NE	2
8	Y	Rowan Ave	Vincent Rd	NW	2
8	Y	Rowan Ave	Vincent Rd	NE	2
8	Y	Rowan Ave	Vincent Rd	SW	2
8	Y	Rowan Ave	Haye St	NW	2
8	Y	Rowan Ave	Haye St	NE	2
8	Y	Rowan Ave	Haye St	SW	2
8	Y	Rowan Ave	Haye St	SE	2
8	Y	Rowan Ave	Malta St	NW	2
8	Y	Rowan Ave	Malta St	NE	2
8	Y	Rowan Ave	Malta St	SW	2
8	Y	Rowan Ave	Malta St	SE	2

8	Y	Rowan Ave	Canal Rd	NW	2
8	Y	Rowan Ave	Canal Rd	NE	2
8	Y	Rowan Ave	Canal Rd	SE	2
8	Y	Rowan Ave	Blue Skyes St	NE	2
8	Y	Rowan Ave	Blue Skyes St	SE	2
8	Y	Rowan Ave	Blue Skyes St	S	1
8	Y	Rowan Ave	Martinson St	NE	2
8	Y	Rowan Ave	Martinson St	S	1
8	Y	Wellesley Ave	Campbell Rd	SE	3
8	Y	Wellesley Ave	Billy Jack St	SW	3
8	Y	Wellesley Ave	Billy Jack St	SE	3
8	Y	Wellesley Ave	Ashton Rd	SW	3
8	Y	Wellesley Ave	Ashton Rd	SE	3
8	Y	Wellesley Ave	Karen Rd	SW	3
8	Y	Wellesley Ave	Karen Rd	SE	3
8	Y	Wellesley Ave	Darin Rd	SW	3
8	Y	Wellesley Ave	Darin Rd	SE	3
8	Y	Wellesley Ave	Kenny Rd	SW	3
8	Y	Wellesley Ave	Kenny Rd	SE	2
8	Y	Wellesley Ave	Harvard Rd	SW	3
8	Y	Wellesley Ave	Harvard Rd	SE	4
8	Y	Wellesley Ave	Harvard Rd	NE	4
8	Y	Wellesley Ave	Arden Rd	SE	4
8	Y	Wellesley Ave	Arden Rd	SE	4
8	Y	Wellesley Ave	Arden Rd	SE	4
8	N	Arden Rd	300' S of Wellesley	W	3
8	N	Arden Rd	300' S of Wellesley	E	2
8	N	Arden Rd	600' S of Wellesley	NE	1
8	N	Arden Rd	650' S of Wellesley	SW	1
8	N	Arden Rd	650' S of Wellesley	SE	1
8	N	Arden Rd	850' S of Wellesley	SW	1
8	N	Arden Rd	850' S of Wellesley	SE	1
8	N	Arden Rd	1450' S of Wellesley	NW	1
8	N	Arden Rd	1450' S of Wellesley	SW	1
8	N	Arden Rd	1550' S of Wellesley	NW	1
8	Y	Wellesley Ave	Lynden Rd	SE	3
8	Y	Wellesley Ave	Mckenzie Rd	SW	1
9	N	Adams Rd	31st St	SW	5
9	Y	Belle Terre	Drive east of SR 27	SW	4
9	Y	Belle Terre	Drive east of SR 27	SE	4
9	Y	Belle Terre	Evergreen	SW	1
9	Y	Sullivan	32nd	NE	1
9	Y	Sullivan	32nd	NW	3
9	Y	Sullivan	Saltese	SW	3

9	Y	Sullivan	Saltese	NW	3
9	Y	Sullivan	Saltese	NE	4
9	Y	Sullivan	Saltese	SE	3
9	Y	Saltese	Conklin	NW	3
9	Y	32nd	Chapman	NW	3
9	Y	32nd	Chapman	NE	3
9	Y	Barker	21st Ct.	SE	3
9	Y	Barker	21st Ct.	NE	3
9	Y	Barker	15th	NE	4
9	Y	Barker	12th	SW	3
9	Y	Barker	12th	NW	3
9	Y	Barker	11th	SW	3
9	Y	Barker	11th	NW	3
9	Y	Barker	11th	NE	4
9	Y	Barker	11th	SE	4
9	Y	Neyland	Gage St.	North	1
9	N	40th	West of Woodlawn Dr.	North	3
9	N	40th	Woodlawn Dr.	North	4
9	N	40th	Woodlawn Dr.	North	4
9	N	Saltese	Century Ct.	North	2
9	N	Saltese	Century Ct.	SW	2
9	N	Saltese	Century Ct.	SE	2
9	N	Saltese	Newer Ct.	North	2
9	N	Saltese	Newer Ct.	SW	2
9	N	Saltese	Newer Ct.	SE	2
9	N	Saltese	West of Newer Ct.	North	2
9	N	Saltese	West of Newer Ct.	South	1
9	N	Newer Ct.	Cul-de-sac South of Saltese	East	2
9	N	Century Ct.	Cul-de-sac South of Saltese	West	2
9	N	Conklin	Sonora Dr.	NE	4
9	N	Conklin	Sonora Dr.	NW	4
9	N	Conklin	Sonora Dr.	SW	4
9	N	Century Ct.	Cul-de-sac South of Saltese	NE	4
9	N	Sonora Dr.	Edra Ct.	NE	4
9	N	Sonora Dr.	Edra Ct.	SE	4
9	N	Sonora Dr.	Edra Ct.	SW	4
9	N	Chapman	30th Ln.	SW	3
9	N	Chapman	30th Ln.	NW	3
9	N	Chapman	30th Ln.	East	1
9	N	Chapman	27th Ln.	SW	3
9	N	Chapman	27th Ln.	NW	2
9	N	Chapman	27th Ln.	East	1
9	N	Chapman	Steen	SW	3
9	N	Chapman	Steen	NW	3

9	N	Chapman	Steen	East	3
9	N	Chapman	Galaxy Ln	SW	2
9	N	Chapman	Galaxy Ln	SE	2
9	N	Chapman	Galaxy Ln	North	1
9	N	Chapman	Daybreak Ln.	NW	2
9	N	Chapman	Daybreak Ln.	NE	2
9	N	Chapman	Daybreak Ln.	South	1
9	N	Chapman	Sumner Ln.	SW	2
9	N	Chapman	Sumner Ln.	SE	3
9	N	Chapman	Sumner Ln.	North	1
9	N	Chapman	Twilight Ln.	NW	3
9	N	Chapman	Twilight Ln.	NE	3
9	N	Chapman	Twilight Ln.	South	1
9	N	Chapman	Viewmont Dr.	SW	3
9	N	Chapman	Viewmont Dr.	SE	3
9	N	Chapman	Viewmont Dr.	North	1
9	N	Chapman	Morningside Heights	NW	3
9	N	Chapman	Morningside Heights	NE	3
9	N	Chapman	Morningside Heights	South	1
9	N	Chapman	Windsor Dr.	SW	3
9	N	Chapman	Windsor Dr.	SE	3
9	N	Chapman	Windsor Dr.	North	4
9	N	Viewmont Dr.	Galaxy Dr.	NW	3
9	N	Viewmont Dr.	Galaxy Dr.	NE	3
9	N	Galaxy Dr.	Corbin Ct. (West)	NE	3
9	N	Galaxy Dr.	Corbin Ct. (West)	SE	3
9	N	Corbin Ct.	Ridge Ct.	East	3
9	N	Galaxy Dr.	Corbin Ct. (East)	SW	3
9	N	Galaxy Dr.	Corbin Ct. (East)	NW	3
9	N	Galaxy Dr.	Windsor Dr.	SW	3
9	N	Galaxy Dr.	Windsor Dr.	NW	3
9	N	Galaxy Dr.	Windsor Dr.	NE	3
9	N	Galaxy Dr.	Cul-de-sac East of Windsor	North	3
9	N	Windsor Dr.	Windsor Ct.	SW	3
9	N	Windsor Dr.	Windsor Ct.	NW	3
9	N	Steen	20th Ct.	SW	3
9	N	Steen	20th Ct.	NW	3
9	N	Steen	18th Ct. (West)	SW	4
9	N	Steen	18th Ct. (West)	NW	4
9	N	Steen	18th Ct. (East)	SE	4
9	N	Steen	18th Ct. (East)	NE	4
9	N	Steen	17th	SW	4
9	N	Steen	17th	NW	4
9	N	Steen	17th	NE	4
9	N	Steen	17th	SE	4

9	N	Morningside Hts.	Daystar	SE	4
9	N	Morningside Hts.	Daystar	NE	4
9	N	Morningside Hts.	Rosemont	SE	4
9	N	Morningside Hts.	Rosemont	SW	4
9	N	Morningside Hts.	Apollo	SE	4
9	N	Morningside Hts.	Apollo	SW	4
9	N	Morningside Hts.	Galacia Ct.	SW	4
9	N	Morningside Hts.	Galacia Ct.	NW	4
9	N	Galacia Ct.	West of Morningside Hts.	South	4
9	N	Apollo	Clover Dr.	NW	4
9	N	Apollo	Clover Dr.	NE	4
9	N	Apollo	Clover Dr.	South	4
9	N	Apollo	Sundance Dr.	NW	4
9	N	Apollo	Sundance Dr.	NE	4
9	N	Apollo	Sundance Dr.	South	4
9	N	Apollo	Daystar	NW	4
9	N	Apollo	Daystar	NE	4
9	N	Apollo	Daystar	SE	4
9	N	Apollo	Daystar	SW	4
9	N	Apollo	Incline	NW	4
9	N	Apollo	Incline	NE	4
9	N	Apollo	Incline	South	4
9	N	Apollo	Selkirk	NW	4
9	N	Apollo	Selkirk	NE	4
9	N	Apollo	Selkirk	South	4
9	N	Incline	Daystar	NW	4
9	N	Incline	Daystar	NE	4
9	N	Incline	Daystar	SE	4
9	N	Incline	Daystar	SW	4
9	N	Selkirk	Daystar	SE	4
9	N	Selkirk	Daystar	SW	4
9	N	Selkirk	Daystar	North	4
9	N	Clover Dr.	Shamrock	SE	4
9	N	Clover Dr.	Shamrock	NE	4
9	N	Clover Dr.	Shamrock	West	4
9	N	Shamrock	Shamrock Ct.	SW	4
9	N	Shamrock	Shamrock Ct.	NW	4
9	N	Shamrock	Shamrock Ct.	East	4
9	N	Meadowview	21st Ct.	SW	3
9	N	Meadowview	21st Ct.	SE	3
9	N	Meadowview	21st Ct.	North	1
9	N	Meadowview	22nd Ct.	NE	3
9	N	Meadowview	22nd Ct.	SE	3
9	N	Meadowview	22nd Ct.	West	1
9	N	Meadowview	Meadow Ct.	NW	4

9	N	Meadowview	Meadow Ct.	NE	4
9	N	Meadowview	Meadow Ct.	South	1
9	N	12th	Greenacres	NE	3
9	N	12th	Greenacres	SE	3
9	N	12th	Greenacres	SW	3
9	N	Moen	Crescent	SE	3
9	N	Moen	Crescent	SW	3
9	N	Crescent	Crescent Ct.	SE	3
9	N	Crescent	Crescent Ct.	SW	3
9	N	Crescent	12th Ct.	SW	3
9	N	Crescent	12th Ct.	NW	3
9	N	12th	East of Crescent	South	3
9	N	11th	Jessica Ln.	NE	3
9	N	11th	Jessica Ln.	NW	3
9	N	11th	Greenacres	NE	3
9	N	11th	Greenacres	SE	3
9	N	11th	Moen	NE	3
9	N	11th	Moen	SE	3
9	N	11th	Crescent	SW	3
9	N	11th	Crescent	NW	3
9	N	11th	West of Crescent	North	3
9	N	11th	Drumond	SW	4
9	N	11th	Drumond	SE	4
9	N	11th	Drumond	North	1
9	N	11th	Virgil Ct.	NW	4
9	N	11th	Virgil Ct.	NE	4
9	N	11th	Virgil Ct.	South	4
9	N	11th	Clara	SW	4
9	N	11th	Clara	SE	4
9	N	11th	Clara	North	4
9	N	11th	Harmony	NW	4
9	N	11th	Harmony	NE	4
9	N	11th	Harmony	South	4
9	N	11th	Harmony Ct.	SW	4
9	N	11th	Harmony Ct.	SE	4
9	N	11th	Harmony Ct.	North	4
9	N	11th	McMillan Ct.	NW	4
9	N	11th	McMillan Ct.	NE	4
9	N	11th	McMillan Ct.	SE	4
9	N	11th	McMillan Ct.	SW	4
9	N	Drumond	13th Ct.	NW	4
9	N	Drumond	13th Ct.	SW	4
9	N	13th Ct.	West of Drumond	South	4
9	N	Drumond	15th	SW	4
9	N	Drumond	15th	NW	4

9	N	Drumond	15th	NE	4
9	N	Drumond	South of 15th	West	1
10	N	Havana	22nd Ave	NE	4
10	N	Havana	22nd Ave	SE	4
10	Y	Glenrose Rd	Pinegrove Ln	NW	4
10	Y	Glenrose Rd	Pinegrove Ln	SW	4
10	Y	Glenrose Rd	Rosedale Ln	NW	4
10	Y	Glenrose Rd	Rosedale Ln	SW	4
10	Y	Glenrose Frontage Rd	Glennaire Dr	SW	3
10	Y	Glenrose Frontage Rd	Glennaire Dr	NE	1
10	Y	Glenrose Rd	Glenrose Frontage Rd	NE	3
10	Y	Glenrose Rd	Glenrose Frontage Rd	SE	3
10	Y	57th Ave	Perry St	NW	2
10	Y	57th Ave	Perry St	NE	1
10	Y	57th Ave	Perry St	SE	3
10	N	58th Ave	Perry St	NE	1
10	N	58th Ave	Helena St	NW	1
10	Y	57th Ave	Hogan Ln	NW	4
10	Y	57th Ave	Hogan Ln	NE	4
10	Y	53rd Ave	Laurelhurst Ct	NW	2
10	Y	53rd Ave	Laurelhurst Ct	NE	2
10	N	53rd Ave	Madelia St (West)	NW	3
10	N	53rd Ave	Madelia St (West)	SW	3
10	N	53rd Ave	Madelia St (East)	SE	3
10	N	55th Ave	Madelia St	NW	2
10	N	55th Ave	Madelia St	NE	2
10	Y	57th Ave	Madelia St	NW	4
10	Y	57th Ave	Madelia St	NE	4
10	Y	57th Ave	Madelia St	S	1
10	Y	57th Ave	Pittsburg St	NW	3
10	Y	57th Ave	Pittsburg St	NE	3
10	Y	57th Ave	Pittsburg St	SW	3
10	Y	57th Ave	Pittsburg St	SE	3
10	Y	57th Ave	Magnolia St	NW	4
10	Y	57th Ave	Magnolia St	NE	4
10	Y	57th Ave	Magnolia St	SW	3
10	Y	57th Ave	Magnolia St	SE	3
10	Y	57th Ave	Napa St	NW	4
10	Y	57th Ave	Napa St	NE	4
10	Y	57th Ave	Napa St	SW	3
10	Y	57th Ave	Napa St	SE	3
10	Y	57th Ave	Napa St	N	1
10	Y	57th Ave	Martin St	SW	3
10	Y	57th Ave	Martin St	SE	3

10	Y	57th Ave	Martin St	N	1
10	Y	57th Ave	Crestline St	NW	4
10	Y	57th Ave	Crestline St	SW	4
10	Y	57th Ave	Crestline St	SE	4
10	Y	57th Ave	Crestline St	N	4
10	Y	57th Ave	Lee St	SW	3
10	Y	57th Ave	Lee St	SE	3
10	Y	57th Ave	Lee St	N	1
10	Y	57th Ave	Lee Way St	NW	4
10	Y	57th Ave	Lee Way St	NE	4
10	Y	57th Ave	Stone St	NW	4
10	Y	57th Ave	Stone St	NE	4
10	Y	57th Ave	Stone St	S	1
10	Y	57th Ave	Cook St	NW	3
10	Y	57th Ave	Cook St	NE	3
10	Y	57th Ave	Cook St	SW	3
10	Y	57th Ave	Cook St	SE	3
10	Y	57th Ave	Cook St	N	1
10	Y	57th Ave	Lacey Ln	SW	3
10	Y	57th Ave	Lacey Ln	SE	3
10	Y	57th Ave	Mt Vernon Rd	SW	5
10	Y	57th Ave	Mt Vernon Rd	SE	5
10	Y	57th Ave	Mt Vernon Rd	N	1
10	Y	57th Ave	Regal St	NW	5
10	Y	57th Ave	Regal St	NE	5
10	Y	57th Ave	Regal St	SW	5
10	Y	57th Ave	Regal St	SE	5
10	Y	Crestline St	55th Ave	NE	4
10	Y	Crestline St	55th Ave	SE	4
10	Y	Crestline St	54th Ln	NE	4
10	Y	Crestline St	54th Ln	SE	4
10	Y	Crestline St	53rd Ave	SE	4
10	N	55th Ave	Stone Ln	NE	2
10	Y	Regal St	55th Ave	NW	4
10	Y	Regal St	55th Ave	NE	4
10	Y	Regal St	55th Ave	SW	4
10	Y	Regal St	55th Ave	SE	4
10	Y	57th Ave	Albertsons E	SW	4
10	Y	57th Ave	Albertsons E	SE	4
10	Y	57th Ave	Albertsons W	SW	4
10	Y	57th Ave	Albertsons W	SE	4
10	Y	57th Ave	Hailee Ln	SW	4
10	Y	57th Ave	Hailee Ln	SE	4
10	Y	57th Ave	Moran Dr	SW	4
10	Y	57th Ave	Moran Dr	SE	4

10	Y	57th Ave	Moran Ct	NW	4
10	Y	57th Ave	Moran Ct	NE	4
10	Y	57th Ave	Donora Dr	SW	4
10	Y	57th Ave	Donora Dr	SE	4
10	Y	57th Ave	Thor St	NW	4
10	Y	57th Ave	Thor St	NE	4
10	Y	57th Ave	Thor St	S	1
10	Y	57th Ave	Ferrall St	SW	4
10	Y	57th Ave	Ferrall St	SE	4
10	Y	57th Ave	Freya St	NW	4
10	Y	57th Ave	Freya St	NE	4
10	Y	57th Ave	Freya St	SW	4
10	Y	57th Ave	Freya St	SE	4
10	Y	57th Ave	Sycamore St	SW	4
10	Y	57th Ave	Sycamore St	SE	4
10	Y	57th Ave	Rebecca St	SW	4
10	Y	57th Ave	Rebecca St	SE	4
10	Y	57th Ave	Palouse Hwy	NW	4
10	Y	57th Ave	Palouse Hwy	NE	4
10	Y	57th Ave	Palouse Hwy	SW	4
10	Y	57th Ave	Palouse Hwy	SE	4
10	Y	57th Ave	Ben Burr Rd	SW	4
10	Y	57th Ave	Ben Burr Rd	SE	4
10	Y	57th Ave	Ben Burr Rd	N	1
10	Y	57th Ave	600' W of Yale Rd	N	4
10	Y	57th Ave	600' W of Yale Rd	S	4
10	Y	57th Ave	Yale Rd	NW	2
10	Y	57th Ave	Yale Rd	NE	2
10	Y	57th Ave	Yale Rd	SW	2
10	Y	57th Ave	Yale Rd	SE	2
10	Y	Yale Rd	300' S of 57th Ave	W	1
10	Y	55th Ave	Freya St	NE	3
10	Y	55th Ave	Freya St	SE	1
10	Y	57th Ave	Lloyd St	NW	2
10	Y	57th Ave	Lloyd St	NE	2
10	Y	57th Ave	Custer St	NW	2
10	Y	Freya St	61st Ave	NE	4
10	Y	Freya St	61st Ave	SE	4
10	Y	Regal St	Albertsons N	NE	3
10	Y	Regal St	Albertsons N	SE	3
10	Y	Regal St	Albertsons S	NE	3
10	Y	Regal St	Albertsons S	SE	3
10	Y	Regal St	Library N	NW	4
10	Y	Regal St	Library N	SW	4
10	Y	Regal St	Library S	NW	4

10	Y	Regal St	Chaser Ln	NE	2
10	Y	Regal St	Chaser Ln	SE	2
10	Y	Regal St	50' N of Chaser Ln	NE	3
10	Y	Regal St	50' N of Chaser Ln	SE	3
10	Y	Regal St	200' N of Chaser Ln	NE	3
10	Y	Regal St	200' N of Chaser Ln	SE	3
10	Y	Regal St	61st Ct	NE	3
10	Y	Regal St	61st Ct	SE	3
10	Y	Regal St	62nd Ln	NW	2
10	Y	Regal St	62nd Ln	SW	2
10	Y	Regal St	62nd Ave	NE	2
10	Y	Regal St	62nd Ave	SE	2
10	Y	Regal St	63rd Ave	NW	3
10	Y	Regal St	63rd Ave	SW	1
10	Y	Regal St	63rd Ave	SE	2
10	N	63rd Ave	600' W of Regal St	N	1
10	N	63rd Ave	1000' W of Regal St	N	1
10	N	63rd Ave	1000' W of Regal St	S	1
10	N	63rd Ave	Cook St	NW	1
10	N	63rd Ave	Cook St	SW	1
10	N	63rd Ave	Altamont St	NW	2
10	N	63rd Ave	Altamont St	SW	2
10	Y	Regal St	64th Ave	NE	2
10	Y	Regal St	64th Ave	SE	2
10	Y	Palouse Hwy	61st Ave	SE	3
10	N	Bates Rd	Ponderosa Dr	SW	4
10	N	Bates Rd	Ponderosa Dr	SE	4
10	N	Bates Rd	Aspen Ln	NW	4
10	N	Bates Rd	Aspen Ln	NE	4
10	N	Bates Rd	Aspen Ln	SW	4
10	N	Bates Rd	Aspen Ln	SE	4
10	N	Bates Rd	Mica Ln	NE	4
10	N	Bates Rd	Mica Ln	SE	4
10	N	Bates Rd	Rimrock Ln	NW	4
10	N	Bates Rd	Rimrock Ln	SW	4
10	N	Gertrude Dr	Flagstone Ln	NE	4
10	N	Gertrude Dr	Flagstone Ln	SE	4
10	N	Gertrude Dr	Sandstone Ln	NE	4
10	N	Gertrude Dr	Sandstone Ln	SE	4
10	N	Gertrude Dr	100' E of Pierce Rd	N	4
10	N	Gertrude Dr	100' E of Pierce Rd	S	4
10	N	51st Ave	Rebecca St	NW	2
10	N	51st Ave	Rebecca St	NE	2
10	N	51st Ave	Rebecca St	S	1
10	N	51st Ave	Ashton Ct	NW	2

10	N	51st Ave	Ashton Ct	NE	2
101	N	51st Ave	Ashton Ct	S	1
10	N	51st Ave	Julia St	NW	3
10	N	51st Ave	Julia St	NE	3
10	N	51st Ave	Julia St	SW	3
10	N	51st Ave	Julia St	SE	4
10	N	51st Ave	Myrtle Ln	NW	3
10	N	51st Ave	Myrtle Ln	NE	3
10	N	51st Ave	Myrtle Ln	SW	3
10	N	51st Ave	Myrtle Ln	SE	3

No curb ramps in this area.

11					
12	Y	Aero	Westbow	NE-1	4
12	Y	Aero	Westbow	NE-2	3
12	Y	Hallet	1st Drive East of Westbow	NW	3
12	Y	Hallet	1st Drive East of Westbow	NE	3
12	Y	Westbow	1st Driveway North of Aero	SW	3
12	Y	Westbow	1st Driveway North of Aero	NW	3
12	Y	Hallet	2nd Drive East of Westbow	NW	3
12	Y	Hallet	2nd Drive East of Westbow	NE	3
12	Y	Westbow	2nd Driveway North of Aero	SW	4
12	Y	Westbow	2nd Driveway North of Aero	NW	4
12	Y	Hallet	3rd Drive East of Westbow	NW	3
12	Y	Hallet	3rd Drive East of Westbow	NE	3
12	Y	Westbow	3rd Driveway North of Aero	SW	4
12	Y	Westbow	3rd Driveway North of Aero	NW	4
12	Y	Hallet	4th Drive East of Westbow	NW	5
12	Y	Hallet	4th Drive East of Westbow	NE	5
12	Y	Aero	Avery	SW	4
12	Y	Aero	Avery	SE	4
12	Y	Aero	Avery	North	4
12	Y	Thorpe	Carnation	SE	4
12	Y	Thorpe	Carnation	SW	4
12	Y	Hallet	Cattail Ln.	SE	4
12	Y	Hallet	Cattail Ln.	SW	4
12	Y	Hallet	Catapillar Dr./West Terrace	NW	5
12	Y	Hallet	Catapillar Dr./West Terrace	NE	5
12	Y	Hallet	Catapillar Dr./West Terrace	SE	4
12	Y	Hallet	Catapillar Dr./West Terrace	SW	4
12	Y	Hallet	Catapillar Driveway	NW	5
12	Y	Hallet	Catapillar Driveway	SE	5
12	Y	Hallet	Chumani	SE	4
12	Y	Hallet	Chumani	SW	4

12	Y	Aero	Dour	SW	4
12	Y	Aero	Dour	SE	4
12	Y	Aero	Dour	North	2
12	Y	Geiger Blvd.	Dowdy	NW	5
12	Y	Geiger Blvd.	Dowdy	NE	5
12	Y	Aero	Driveway East of Ramp	East	5
12	Y	Aero	Driveway East of Ramp	West	5
12	Y	Aero	Driveway West of Westbow	East	5
12	Y	Aero	Driveway West of Westbow	West	5
12	Y	Aero	Fruitvale	SE	4
12	Y	Aero	Fruitvale	North	1
12	Y	Westbow	Hallet	NW	4
12	Y	Hallet	Holly	NE	4
12	Y	Aero	Noah	SW	4
12	Y	Aero	Noah	SE	4
12	Y	Aero	Noah	North	4
12	Y	Hayford	Richland	NE	4
12	Y	Aero	Thomas Mallen	SW	4
12	Y	Aero	Thomas Mallen	NW	4
12	Y	Hallet	Thomas Mallen	SW	4
12	Y	Geiger Blvd.	Thomas Mallen	NW	5
12	Y	Geiger Blvd.	Thomas Mallen	NE	5
12	Y	Hallet	Waterlilly Ln.	SE	4
12	Y	Hallet	Waterlilly Ln.	SW	4
12	Y	Aero	West Terrace (North)	NW	4
12	Y	Aero	West Terrace (North)	NE	4
12	Y	Aero	West Terrace (North)	South	4
12	Y	Aero	West Terrace (South)	SW	4
12	Y	Aero	West Terrace (South)	SE	4
12	N	Melville	West Terrace Dr.	NW	5
12	N	Melville	West Terrace Dr.	NE	5
12	N	West Terrace Dr.	Champion Ln	SW	5
12	N	West Terrace Dr.	Champion Ln	NW	5
12	N	West Terrace Dr.	Champion Ln	East	5
12	N	West Terrace Dr.	Masters Ln.	SW	4
12	N	West Terrace Dr.	Masters Ln.	NW	4
12	N	West Terrace Dr.	Masters Ln.	East	1
12	N	West Terrace Dr.	Floyd Dr.	SE	4
12	N	West Terrace Dr.	Floyd Dr.	NE	4
12	N	West Terrace Dr.	Floyd Dr.	West	2
12	N	West Terrace Dr.	Kite Dr.	SE	4
12	N	West Terrace Dr.	Kite Dr.	NE	4
12	N	West Terrace Dr.	Stadler Ct	NE	3
12	N	West Terrace Dr.	Stadler Ct	SE	3
12	N	West Terrace Dr.	Stadler Ct	SW	3

12	N	West Terrace Dr.	Stadler Ct	NW	3
12	N	West Terrace Dr.	Parway Ln. (South)	SW	3
12	N	West Terrace Dr.	Parway Ln. (South)	NW	3
12	N	West Terrace Dr.	Parway Ln. (South)	NE	3
12	N	West Terrace Dr.	Parway Ln. (South)	SE	3
12	N	West Terrace Dr.	Rodgers Dr.	SE	3
12	N	West Terrace Dr.	Rodgers Dr.	NE	3
12	N	West Terrace Dr.	Parway Ln. (North)	SW	3
12	N	West Terrace Dr.	Parway Ln. (North)	NW	3
12	N	West Terrace Dr.	Parway Ln. (North)	NE	3
12	N	West Terrace Dr.	Parway Ln. (North)	SE	2
12	N	West Terrace Dr.	Ballesteros Ct.	SE	4
12	N	West Terrace Dr.	Ballesteros Ct.	NE	4
12	N	West Terrace Dr.	January Dr. (East)	SW	4
12	N	West Terrace Dr.	January Dr. (East)	SE	4
12	N	Richland	Brodin Ln.	NW	2
12	N	Richland	Brodin Ln.	NE	2
12	N	Richland	Safflower Ln.	NW	3
12	N	Richland	Safflower Ln.	NE	3
12	N	Richland	Blackberry St.	NW	3
12	N	Richland	Blackberry St.	NE	3
12	N	Richland	Blackberry St.	SE	3
12	N	Richland	Strawberry St.	NW	3
12	N	Richland	Strawberry St.	NE	3
12	N	Richland	Strawberry St.	SE	3
12	N	Blackberry St.	Strawberry St.	NW	3
12	N	Blackberry St.	Strawberry St.	East	3
12	N	Richland	Fruitvale	NW	3
12	N	Richland	Fruitvale	SW	2
12	N	Fruitvale	Raspberry	SW	2
12	N	Fruitvale	Raspberry	NW	2
12	N	Fruitvale	Barberry	SW	2
12	N	Fruitvale	Barberry	NW	2
12	N	Fruitvale	January (West)	SW	4
12	N	Fruitvale	January (West)	NW	4
12	N	Fruitvale	January (East)	SE	4
12	N	Fruitvale	January (East)	NE	4
12	N	Dana	January	NE	4
12	N	Dana	January	SE	4
12	N	Dana	January	West	4
12	N	Natalie	Camille Ct.	NE	4
12	N	Dana	Camille Ct.	NW	4
12	N	Dana	Camille Ct.	South	4
12	N	Dour	Gabi Ct.	SE	4
12	N	Dour	Gabi Ct.	NE	4

12	N	Dour	Gabi Ct.	West	4
12	N	Dour	January	SW	4
12	N	Dour	January	NW	4
12	N	Dour	January	NE	4
12	N	Dour	January	SE	4
12	N	January	West Terrace Dr. (West)	NW	3
12	N	January	West Terrace Dr. (West)	NE	4
12	N	January	West Terrace Dr. (West)	SW	3
12	N	January	West Terrace Dr. (West)	SE	4
12	N	January	Thomas Mallen	NW	4
12	N	January	Thomas Mallen	SW	4
12	N	72nd	Noah	NW	4
12	N	72nd	Noah	NE	4
12	N	72nd	Noah	South	4
12	N	72nd	West Terrace Dr.	NW	4
12	N	72nd	West Terrace Dr.	NE	4
12	N	72nd	West Terrace Dr.	SE	4
12	N	72nd	West Terrace Dr.	SW	4
12	N	72nd	Avery	NW	4
12	N	72nd	Avery	NE	4
12	N	72nd	Avery	South	4
12	N	West Terrace Dr.	Claire	NW	4
12	N	West Terrace Dr.	Claire	NE	4
12	N	West Terrace Dr.	Claire	SE	4
12	N	West Terrace Dr.	Claire	SW	4
12	N	West Terrace Dr.	Caelen	NW	4
12	N	West Terrace Dr.	Caelen	NE	4
12	N	West Terrace Dr.	Caelen	SE	4
12	N	West Terrace Dr.	Caelen	SW	4
12	N	West Terrace Dr.	Asher Dr.	SW	4
12	N	West Terrace Dr.	Asher Dr.	NW	4
12	N	West Terrace Dr.	Asher Dr.	East	4
12	N	West Terrace Dr.	Spencer Cr.	SW	4
12	N	West Terrace Dr.	Spencer Cr.	NW	4
12	N	West Terrace Dr.	Spencer Cr.	East	4
12	N	West Terrace Dr.	Nick	SW	4
12	N	West Terrace Dr.	Nick	NW	4
12	N	West Terrace Dr.	Nick	East	4
12	N	Lucas	Asher Dr.	NE	4
12	N	Lucas	Asher Dr.	SE	4
12	N	Lucas	Asher Dr.	West	4
12	N	Lucas	Caelen	NE	4
12	N	Lucas	Caelen	SE	4
12	N	Lucas	Caelen	West	4
12	N	Caelen	April Ct.	SW	4

12	N	Caelen	April Ct.	SE	4
12	N	Caelen	April Ct.	North	4
12	N	Lucas	Sage Ct.	NW	4
12	N	Lucas	Caelen	SW	4
12	N	Lucas	Caelen	East	4
12	N	Claire	Jolynn	NW	4
12	N	Claire	Jolynn	NE	4
12	N	Lucas	Jolynn	NE	4
12	N	Lucas	Jolynn	South	4
12	N	Caelen	Allora Ct.	NW	4
12	N	Caelen	Allora Ct.	SW	4
12	N	Caelen	Allora Ct.	East	4
12	N	Thomas Mallen	800' North of Aero	West	2
12	N	Thomas Mallen	1000' South of Fox Tail Ln.	West	2
12	N	Thomas Mallen	Fox Tail Ln.	SW	4
12	N	Thomas Mallen	Fox Tail Ln.	NW	4
12	N	Winona	Chumani	NE	4
12	N	Caelen	Allora Ct.	NE	4
12	N	Caelen	Allora Ct.	South	4
12	N	Thomas Mallen	Red	SE	4
12	N	Thomas Mallen	Red	NE	4
12	N	Thomas Mallen	Silver	SE	4
12	N	Thomas Mallen	Silver	NE	4
12	N	Silver Ct.	Silver	NW	1
12	N	Silver Ct.	Silver	SW	1
12	N	Silver Ct.	Silver	NW	1
12	N	Red	Silver	NW	4
12	N	Red	Silver	NE	4
12	N	Red	Silver	SE	4
12	N	Red	Silver	SW	4
12	N	Sugar	Silver	NW	4
12	N	Sugar	Silver	NE	4
12	N	Sugar	Silver	South	4
12	N	Sugar	Red	NW	4
12	N	Sugar	Red	NE	4
12	N	Sugar	Red	South	4
12	N	Sugar	Holly	NW	4
12	N	Sugar	Holly	SW	4
12	N	Sugar	Holly	East	4
12	N	Carnation	Mack	NE	4
12	N	Carnation	Mack	SE	4
12	N	Carnation	Mack	West	1
12	N	46th	Mack	NE	5
12	N	46th	Mack	SE	5
12	N	46th	Mack	West	5

13

No curb ramps in this
area.

Appendix E

Pedestrian Push Button Inventory Summary and Details

Argonne / Bigelow Gulch

APS
Mounting Height (48" max - 15" min)
Sufficient Clear Space
 2% Cross Slope
 Min Dimension (30" width and 54" length)
 Reach Ranges (10" - 24")
 Constraints
 Connected to Crosswalk

	NW	NE	SE	SW				
Y	Y	Y	Y	Y				
42"	42"	42"	42"	42"				
Y	Y	Y	Y	Y				
Y	Y	Y	Y	Y				
Y	Y	Y	Y	Y				
Y	Y	Y	Y	Y				
N	N	N	N	N				
Y	Y	Y	Y	Y				

Argonne / Upriver

APS
Mounting Height (48" max - 15" min)
 Sufficient Clear Space
2% Cross Slope
 Min Dimension (30" width and 54" length)
 Reach Ranges (10" - 24")
 Constraints
 Connected to Crosswalk

	NW	NE	SE	SW				
Y	Y	Y	Y	Y				
42"	42"	42"	42"	42"				
N	N	N	N	N				
Y	Y	N	N	N				
Y	Y	Y	Y	Y				
Y	Y	Y	Y	Y				
N	N	N	N	N				
Y	Y	Y	Y	Y				

Country Homes / Wall

APS
Mounting Height (48" max - 15" min)
Sufficient Clear Space
 2% Cross Slope
 Min Dimension (30" width and 48" length)
 Reach Ranges (10" - 24")
 Constraints
 Connected to Crosswalk

	NW	NE	SE	SW	W	E		
Y	Y	Y	Y	Y	Y	Y		
42"	42"	42"	42"	42"	42"	42"		
Y	Y	Y	Y	Y	Y	Y		
Y	Y	Y	Y	Y	Y	Y		
Y	Y	Y	Y	Y	Y	Y		
Y	Y	Y	Y	Y	Y	Y		
N	N	N	N	N	N	N		
Y	Y	Y	Y	Y	Y	Y		

Market / Farwell

APS

Mounting Height (48" max - 15" min)

Sufficient Clear Space

2% Cross Slope

Min Dimension (30" width and 48" length)

Reach Ranges (10" - 24")

Constraints

Connected to Crosswalk

	NW	NW	NE	NE	SE	SE	SW	SW
Y	Y	Y	Y	Y	Y	Y	Y	Y
42"	42"	42"	42"	42"	42"	42"	42"	42"
Y	Y	Y	Y	Y	Y	Y	Y	Y
Y	Y	Y	Y	Y	Y	Y	Y	Y
Y	Y	Y	Y	Y	Y	Y	Y	Y
Y	Y	Y	Y	Y	Y	Y	Y	Y
N	N	N	N	N			N	N
Y	Y	Y	Y	Y	Y	Y	Y	Y

Market / Parksmith

APS

Mounting Height (48" max - 15" min)

Sufficient Clear Space

2% Cross Slope

Min Dimension (30" width and 48" length)

Reach Ranges (10" - 24")

Constraints

Connected to Crosswalk

	NW	NE	SE	SW				
Y	Y	Y	Y	Y				
42"	42"	42"	42"	42"				
Y	Y	Y	Y	Y				
Y	Y	Y	Y	Y				
Y	Y	Y	Y	Y				
Y	Y	Y	Y	Y				
N	N	N	N	N				
Y	Y	Y	Y	Y				

Monroe / Wall

APS

Mounting Height (48" max - 15" min)

Sufficient Clear Space

2% Cross Slope

Min Dimension (30" width and 48" length)

Reach Ranges (10" - 24")

Constraints

Connected to Crosswalk

	NW	NE	SE	SE	SW			
Y	Y	Y	Y	Y	Y			
42"	42"	42"	42"	42"	42"			
Y	N	Y	Y	Y	Y			
Y	Y	Y	Y	Y	Y			
Y	N	Y	Y	Y	Y			
Y	Y	Y	Y	Y	Y			
N	N	N	N	N	N			
Y	Y	Y	Y	Y	Y			

Pittsburg / Farwell

APS
Mounting Height (48" max - 15" min)
Sufficient Clear Space
 2% Cross Slope
 Min Dimension (30" width and 48" length)
 Reach Ranges (10" - 24")
 Constraints
 Connected to Crosswalk

	NW	NW	NE	NE	SW	SW	SE	SE
Y	Y	Y	Y	Y	Y	Y	Y	Y
42"	42"	42"	42"	42"	42"	42"	42"	42"
Y	Y	Y	Y	Y	Y	Y	Y	Y
Y	Y	Y	Y	Y	Y	Y	Y	Y
Y	Y	Y	Y	Y	Y	Y	Y	Y
Y	Y	Y	Y	Y	Y	Y	Y	Y
N	N	N	N	N	N	N	N	N
Y	Y	Y	Y	Y	Y	Y	Y	Y

Waikiki / 5 Mile

APS
Mounting Height (48" max - 15" min)
Sufficient Clear Space
 2% Cross Slope
 Min Dimension (30" width and 48" length)
 Reach Ranges (10" - 24")
 Constraints
 Connected to Crosswalk

	NW	SE	SW				
Y	Y	Y					
42"	42"	42"					
Y	Y	Y					
Y	Y	Y					
Y	Y	Y					
Y	Y	Y					
N	N	N					
Y	Y	Y					

57th / Palouse

APS
Mounting Height (48" max - 15" min)
Sufficient Clear Space
 2% Cross Slope
 Min Dimension (30" width and 48" length)
 Reach Ranges (10" - 24")
 Constraints
 Connected to Crosswalk

	NW	NW	NE	SE	SE	SW		
Y	Y	Y	Y	Y	Y	Y		
42"	42"	42"	42"	42"	42"	42"		
Y	Y	Y	Y	Y	Y	Y		
Y	Y	Y	Y	Y	Y	Y		
Y	Y	Y	Y	Y	Y	Y		
Y	Y	Y	Y	Y	Y	Y		
N	N	N	N	N	N	N		
Y	Y	Y	Y	Y	Y	Y		

Argonne / Wellesley

APS
Mounting Height (48" max - 15" min)

	NW	NE	SW				
Y	Y	Y					
42"	42"	42"					

Sufficient Clear Space
 2% Cross Slope
 Min Dimension (30" width and 48" length)
 Reach Ranges (10" - 24")
 Constraints
 Connected to Crosswalk

Y	Y	Y					
Y	Y	Y					
Y	Y	Y					
Y	Y	Y					
N	N	N					
Y	Y	Y					

Cascade / Wall

APS
Mounting Height (48" max - 15" min)
Sufficient Clear Space
 2% Cross Slope
 Min Dimension (30" width and 48" length)
 Reach Ranges (10" - 24")
 Constraints
 Connected to Crosswalk

NW	NE	SE					
Y	Y	Y					
42"	42"	42"					
N	N	Y					
N	N	Y					
Y	Y	Y					
Y	Y	Y					
N	N	N					
Y	Y	Y					

Fort Wright / Government Way

APS
Mounting Height (48" max - 15" min)
Sufficient Clear Space
 2% Cross Slope
 Min Dimension (30" width and 48" length)
 Reach Ranges (10" - 24")
 Constraints
 Connected to Crosswalk

NW	NE	SW					
Y	Y	Y					
42"	42"	42"					
Y	Y	N					
Y	Y	N					
Y	Y	N					
Y	Y	N					
N	N	N					
Y	Y	Y					

Market / Freya / Regal

APS
Mounting Height (48" max - 15" min)
Sufficient Clear Space
 2% Cross Slope

NW	NE	SE	SW				
Y	Y	Y	Y				
42"	42"	42"	42"				
Y	Y	Y	Y				
Y	Y	Y	Y				

Min Dimension (30" width and 48" length)
 Reach Ranges (10" - 24")
 Constraints
 Connected to Crosswalk

Y	Y	Y	Y				
Y	Y	Y	Y				
N	N	N	N				
Y	Y	Y	Y				

Mill / Hastings

APS
Mounting Height (48" max - 15" min)
Sufficient Clear Space
 2% Cross Slope
 Min Dimension (30" width and 48" length)
 Reach Ranges (10" - 24")
 Constraints
 Connected to Crosswalk

NW	NE	SE					
Y	Y	Y					
42"	42"	42"					
Y	Y	Y					
Y	Y	Y					
Y	Y	Y					
Y	Y	Y					
N	N	N					
Y	Y	Y					

Northern Quest / Hayford

APS
Mounting Height (48" max - 15" min)
Sufficient Clear Space
 2% Cross Slope
 Min Dimension (30" width and 48" length)
 Reach Ranges (10" - 24")
 Constraints
 Connected to Crosswalk

NW	NE	SE	SW				
Y	Y	Y	Y				
42"	42"	42"	42"				
Y	Y	Y	Y				
Y	Y	Y	Y				
Y	Y	Y	Y				
Y	Y	Y	Y				
N	N	N	N				
Y	Y	Y	Y				

Waikiki / Hawthorne

APS
Mounting Height (48" max - 15" min)
Sufficient Clear Space
 2% Cross Slope
 Min Dimension (30" width and 48" length)
 Reach Ranges (10" - 24")

NW	NW	NE	NE	SE	SE	SW	SW
Y	Y	Y	Y	Y	Y	Y	Y
42"	42"	42"	42"	42"	42"	42"	42"
Y	Y	Y	Y	Y	Y	Y	Y
Y	Y	Y	Y	Y	Y	Y	Y
Y	Y	Y	Y	Y	Y	Y	Y
Y	Y	Y	Y	Y	Y	Y	Y
Y	Y	Y	Y	Y	Y	Y	Y

Constraints
 Connected to Crosswalk

N	N	N	N	N	N	N	N
Y	Y	Y	Y	Y	Y	Y	Y

Whitworth / Hawthorne

APS
Mounting Height (48" max - 15" min)
Sufficient Clear Space
 2% Cross Slope
 Min Dimension (30" width and 48" length)
 Reach Ranges (10" - 24")
 Constraints
 Connected to Crosswalk

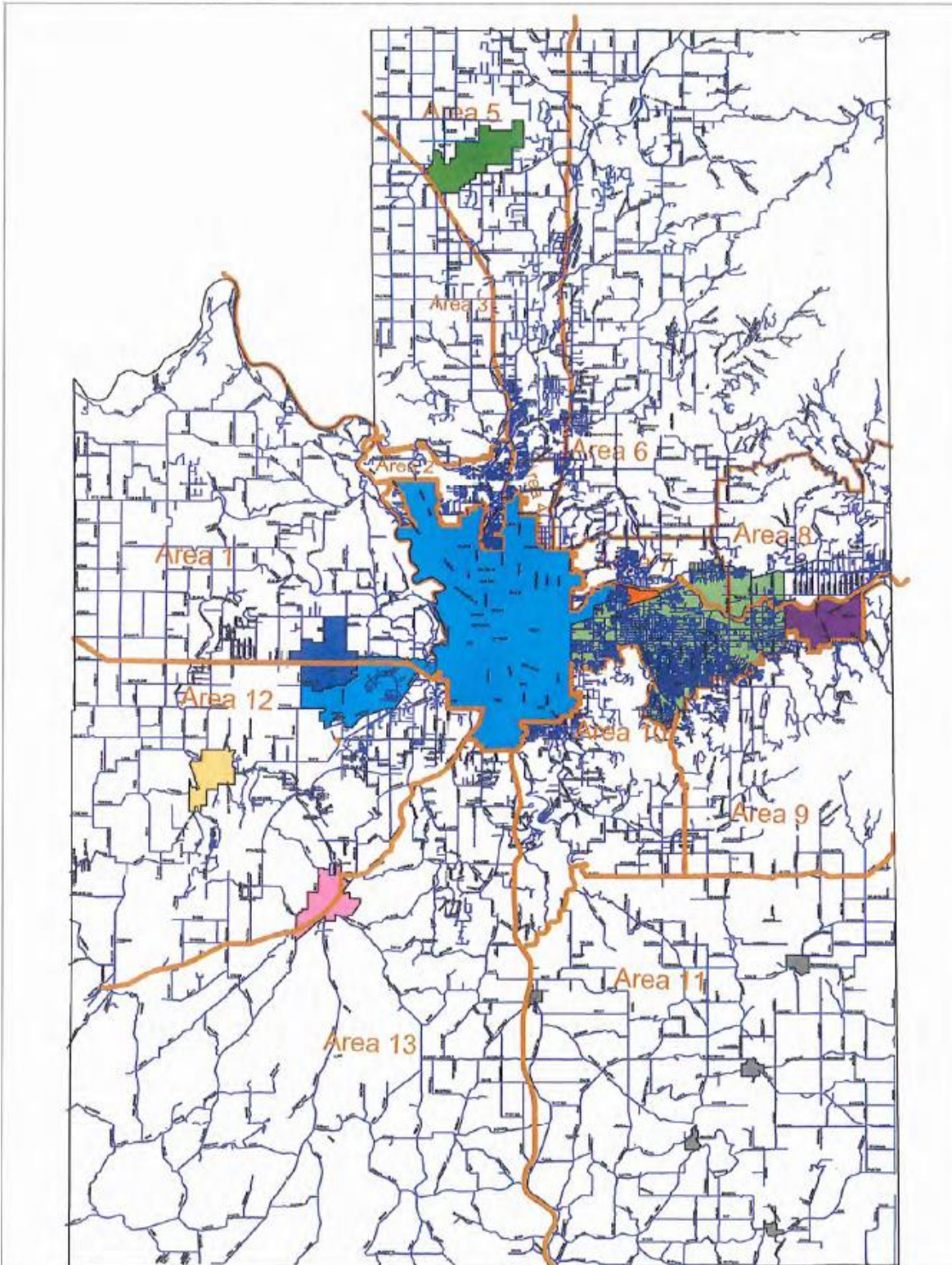
	NW	NW	NE	SE	SE	SW		
Y	Y	Y	Y	Y	Y	Y		
45"	42"	42"	42"	42"	42"	42"		
N	Y	Y	Y	Y	Y	Y		
Y	Y	Y	Y	Y	Y	Y		
Y	Y	Y	Y	Y	Y	Y		
Y	Y	Y	Y	Y	Y	Y		
N	N	N	N	N	N	N		
N	Y	Y	Y	Y	Y	Y		

57th / Regal

APS
Mounting Height (48" max - 15" min)
Sufficient Clear Space
 2% Cross Slope
 Min Dimension (30" width and 48" length)
 Reach Ranges (10" - 24")
 Constraints
 Connected to Crosswalk

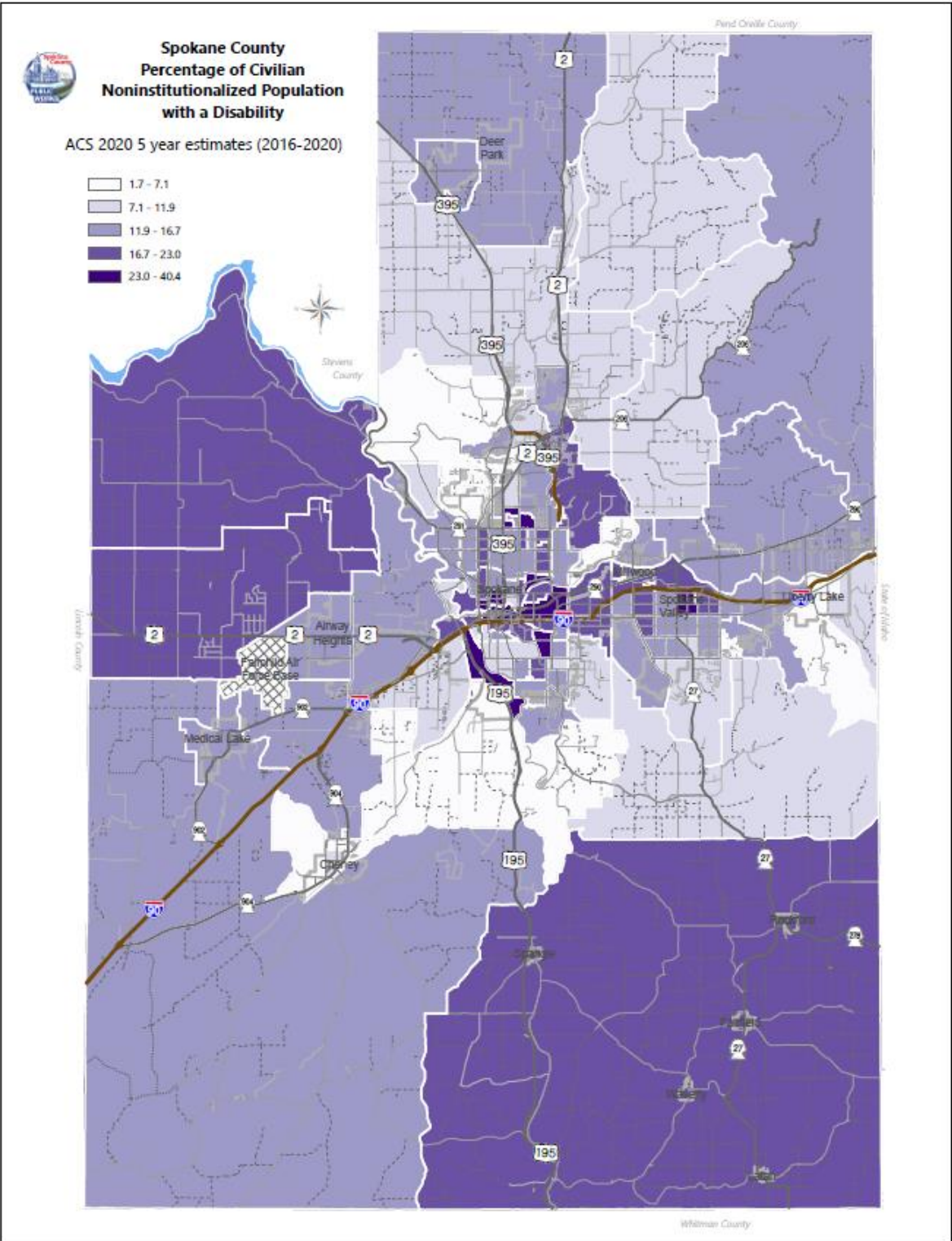
	NW	NE	SE	SW				
Y	Y	Y	Y	Y				
42"	42"	42"	42"	42"				
Y	Y	Y	Y	Y				
Y	Y	Y	Y	Y				
Y	Y	Y	Y	Y				
Y	Y	Y	Y	Y				
N	N	N	N	N				
Y	Y	Y	Y	Y				

Appendix F
13 Areas for the ADA Transition Plan Self-Assessment



Appendix G

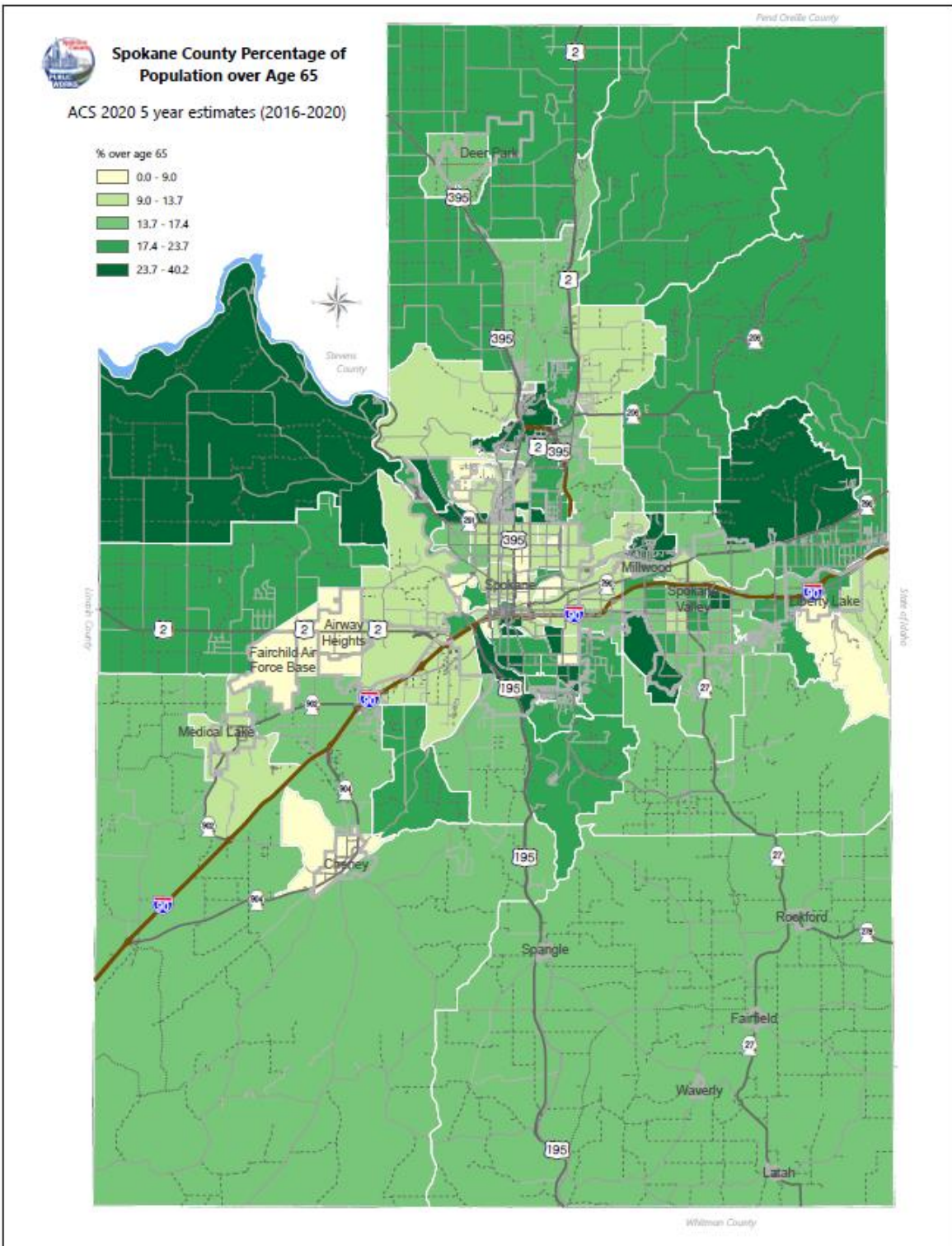
Percent of Population with Disabilities by Census Tract



Disabilities in Spokane County broken down into census tract. Data from the American community Survey 5-year average, 2016-2020, courtesy of Spokane Regional Transportation Council.

Appendix H

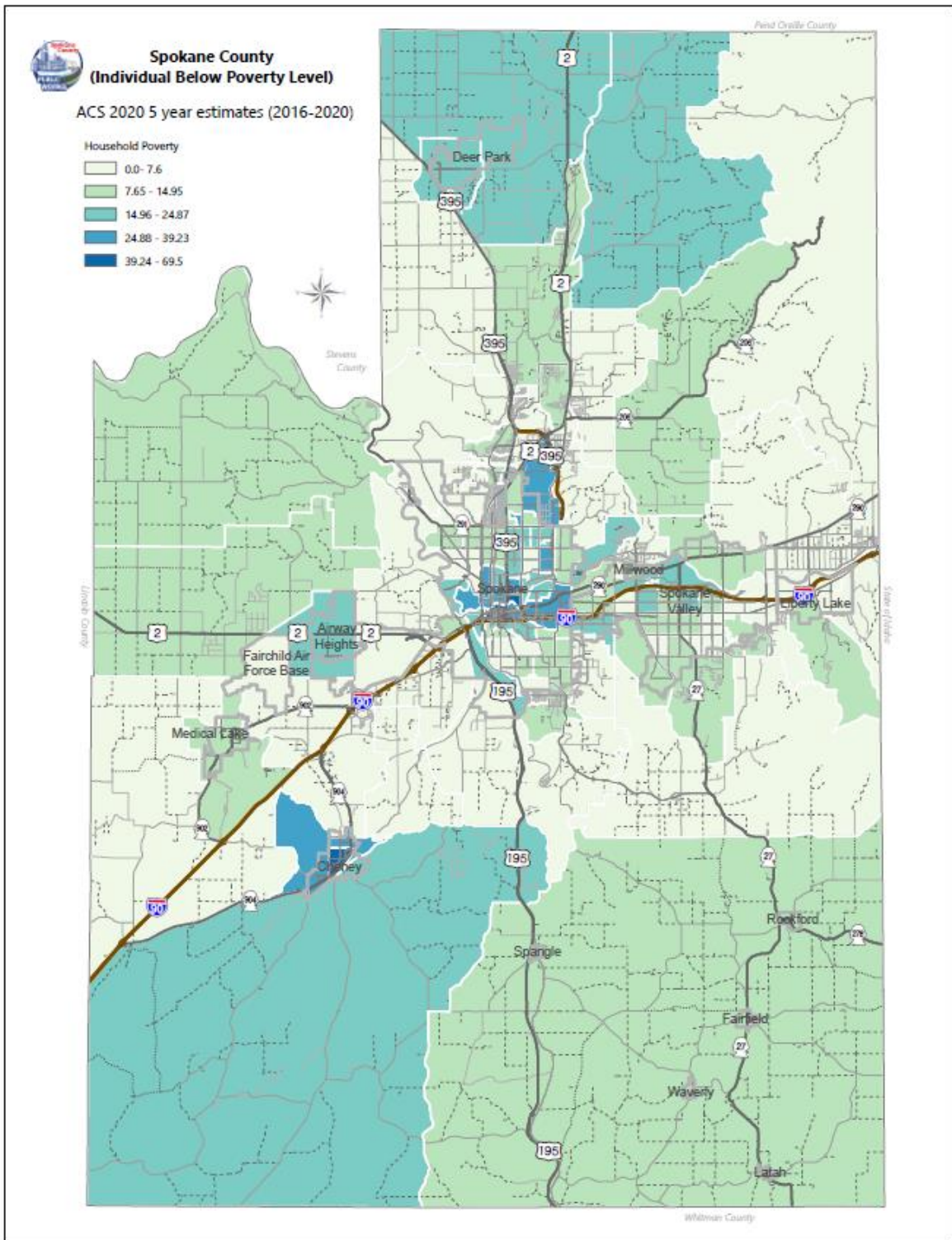
Population 65+ by Census Tract



Population of the elderly, 65+, in Spokane County by census tract. Data from the American community Survey 5-year average, 2016-2020, courtesy of Spokane Regional Transportation Council.

Appendix I

Poverty by Census Tract



Poverty by census tract. Data from the American community Survey 5-year average, 2016-2020, courtesy of Spokane Regional Transportation Council.

Definitions

Accessible: Describes a site, building, facility, or portion thereof that complies with the Americans with Disabilities Act.

Accessible Pedestrian Signal (APS): A communication device located at traffic signals allowing for pedestrian walk phases using non-visual cues such as, audible tones, vibrotactile features or auditory announcements.

Accessible Route: An unobstructed, continuous route for pedestrian travel along a public sidewalk, crosswalk or ramp.

ADA Accessibility Guidelines (ADAAG): Also known as the 2010 ADA Standards for Accessible Design, contains the scoping and technical requirements for accessibility to buildings and facility sites.

Complaint - A complaint, also referred to as a grievance, pertaining to this document, is a claimed violation of ADA policy within Spokane County specifically related to curb ramps, intersection crossings, and pedestrian signals.

Crosswalk: A designated, marked pedestrian path across a roadway.

Curb: A vertical or rolled transition from the roadway or gutter to the sidewalk or planting strip.

Curb Ramp: A short ramp cutting through a curb or built up to it.

Detectible Warning: A standardized surface feature built in or applied to a walking surface or other elements along a public access path to warn visually impaired persons of a hazard.

Disability - The term disability means, with respect to an individual:

- A physical or mental impairment that substantially limits one or more of the major life activities of such individual;
- A record of such impairment; or
- Being regarded as having such impairment.

Facility: All or any portion of buildings, structures, site improvements, equipment, roads, walks, passageways, parking lots or other real or personal property located on a public right-of-way.

Pedestrian Access: Any walk or path intended for pedestrian movement or activity.

Public Rights of way (ROW or R/W): A type of easement granted or reserved over the land for transportation purposes, this can be for highway, public footpath, bike trails or electrical transmission lines.

Ramp: A sloped portion of walkway with a running slope greater than 1:20 or 5 percent.

Sidewalk: The portion within the public rights of way which is improved for use by pedestrians.